



TOPPING STATIONS WALL MOUNT STATIONS

Date:

Project:

Quantity:

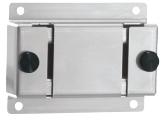
Item Number:



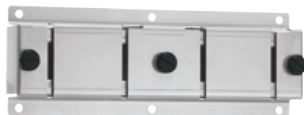
Sample Station



TT 86611



Single 87216



Double 87217



Triple 87218

Wall-Mount Brackets



87232

87231

1/9-Size Plastic Jar & Lid Assembly



**DPD 1L 87214
DPD 2L 87215**



87213 87217

Ladles



87234

85156

Spoon & Strike Bar

NSF All models listed (except 87234 Strike Bar)

FOB Richfield, Wisconsin 53076



TOPPING STATIONS WALL MOUNT STATIONS

Create a Wall-Mount Station

Design your own topping station by selecting a wall-mount bracket and choosing from the specified components listed on this sheet.

Wall-Mount Bracket

Brackets hold (1), (2) or (3) components. Extension shelf option adds 5" (12.7 cm) depth when used with double and triple wall-mount brackets.

Bracket Models		Single 87216	Double 87217	Triple 87218
Height	in	3 3/8	3 3/8	3 3/8
	cm	8.6	8.6	8.6
Width	in	4 5/8	9 5/8	14 5/8
	cm	11.7	24.4	37.1
Depth	in	1	1	1
	cm	2.5	2.5	2.5

Dry Product Dispensers (no bracket)

Choose from 1 or 2 liter capacity models. This hopper system accurately portions powders and other dry products. It dispenses 1/4 to 2 oz (7-60 mL) portions by volume and is adjustable in 1/8 oz (3.4 mL) increments. Suggestions for use include smoothie powders, mix-ins for blended ice cream drinks, cocktail powders, and more. A product guideline is consistent shapes, 1/2" (1.3 cm) in diameter or smaller; staying away from products that tend to melt or stick together at room temperatures.

Very fine protein or malt powders may bridge as the hopper empties. The addition of a **Free Flow Accessory (2-L FF 86625)** should solve bridging while the **Stir Paddle Accessory (1-L SP 86587, 2-L SP 86596)** addresses irregular pieces such as cookie crumble.

Single DPD		1-Liter 87214	2-Liter 87215
Height	in	13 9/16	17 7/16
	cm	34.5	44.3
Width	in	4 11/16	4 11/16
	cm	11.9	11.9
Depth	in	6 5/16	6 5/16
	cm	16	16

Topping Tunnel™ Whipped Topping Dispenser, TT 86611

The Topping Tunnel™ is a handy holder that permits single-handed dispensing of specified Rich's® Whipped Topping; up to a 16 oz (.95 L) bag. Simply place a Rich's® pastry bag into the unit (tip down), give a gentle squeeze and you're ready to dollop a wide variety of food items quickly and safely. Flexible pastry bag shape packaging achieves superior evacuation over aerosol cans and present far less risk of hand contamination.

Contact your Rich's® representative, to purchase pre-whipped topping products for the Topping Tunnel™. Topping product numbers are located on the Topping Tunnel™ page of our web site.

Model TT		Height	Width	Depth
86611	in	7 11/16	4 1/4	3 15/16
	cm	19.5	10.8	10





TOPPING STATIONS WALL MOUNT STATIONS

Date:

Project:

Quantity:

Item Number:

Jar & Lid Assemblies

The 1/9-size jar is constructed of high-impact Polypropylene. Its features and color are exclusive to Server Products; rear tabs allow the hinged lid to be attached and side slots accept a strike bar for leveling portions. The stainless steel hinged lid is notched to allow the lid to close over a ladle handle, for increased sanitation.

Assembly Specifications

Model		Deep 87232	Shallow 87231
Height	in	7 ⁵ / ₁₆	4 ¹⁵ / ₁₆
	cm	18.6	12.5
Height-A (lid open)	in	12 ¹ / ₄	9 ⁷ / ₈
	cm	31.1	25.1
Width	in	4	4
	cm	10.1	10.1
Depth	in	6 ⁷ / ₈	6 ⁷ / ₈
	cm	17.5	17.5
Lid Depth	in	9 ¹³ / ₁₆	9 ¹³ / ₁₆
	cm	24.9	24.9
Capacity	oz	57	34
	L	1.7	1
Cutout Size	in	6 ¹ / ₈ x 3 ⁷ / ₈	6 ¹ / ₈ x 3 ⁷ / ₈
	cm	15.5 x 9.8	15.5 x 9.8

Dispensing Methods

Stainless steel ladles have a 1 oz (30 mL) capacity. For Deep Jars, use **Ladle 87213**. Shallow Jars use **Ladle 82717**. A clear Polycarbonate 1/2 oz (15 mL) **Spoon 85156** allows for scooping product. The addition of a **Strike Bar 87234** provides a simple portion control tool.



Warranty

Server Products equipment is backed by a two-year limited warranty against defects in materials and workmanship. For our complete warranty statement, see our web site or contact us.

Wall-Mount Station Order Guide

Wall-Mount Bracket

- 87216 Single Bracket
- 87217 Double Bracket
- 87218 Triple Bracket
- 86754 Extension Shelf 5" (12.7 cm), Double
- 86755 Extension Shelf 5" (12.7 cm), Triple

Dry Product Dispensers (no bracket)

- 87214 1-Liter Single
- 87215 2-Liter Single
- 86625 Free Flow Accessory, 2-Liter
- 86596 Stir Paddle Accessory, 2-Liter
- 86587 Stir Paddle Accessory, 1-Liter

Whipped Topping Dispenser

- 86611 Topping Tunnel™

Jar & Lid Assembly

- 87232 Deep Jar, 6" (15.2 cm)
- 87231 Shallow Jar, 3 1/2" (8.9 cm)

Dispensing Method

- 87213 Stainless Steel Ladle (for deep jar)
- 82717 Stainless Steel Ladle (for shallow jar)
- 85156 Polycarbonate Spoon (for deep or shallow jar)
- 87234 Strike Bar (for use with Spoon 85156)



