

# Smarter Performance & Productivity

## Dirty Air and Debris Never Contact the Motor!

PROVIDES MAXIMUM PERFORMANCE  
AND EXTENDED PRODUCT LIFE

3-Layer Filter Bag + Single Layer Air Filter + Exhaust Filter  
= **5-Layer**  
FILTRATION SYSTEM  
FOR IMPROVED AIR QUALITY

**AIR FILTER**  
Plush single-layer filter covers the exit channel.

**3-LAYER FILTER BAG**  
Choose from Standard or HEPA 3-layer filter bags. Both bags trap particles as small as .3 microns.

**EXHAUST FILTER**  
Before leaving the vacuum compartment, air is filtered a fifth time through the fixed exhaust filter.

**MOTOR HOUSING**  
Airflow is directed around motor housing, prolonging motor life and improving motor efficiency.



3-LAYER HIGH PERFORMANCE FILTER BAG



3-LAYER HEPA FILTER BAG



**HIGHEST PERFORMANCE RATING**  
Rubbermaid vacuum cleaners have superior suction.

### QUIET, EFFICIENT CLEANING

Both Manual and Power Height Upright Vacuums support day and night cleaning with these standard features:

- **QUIET OPERATION**  
Supports day cleaning and use in noise-sensitive environments.
- **ON-BOARD TOOLS**  
Crevice tool and upholstery brush are stored on-board.
- **FULL BAG SENSOR**  
Tells user when bag needs to be replaced, making cleaning more effective.
- **BRUSH ROLL JAM SENSOR**  
Electronic jam sensor shuts down motor so jam can be cleared. Motor is ready to operate immediately, no wait time for motor to cool!
- **LEED POINT QUALIFIED**  
Power Height and Manual Height Upright Vacuums qualify for LEED EB CR 3.7.

**MANUAL HEIGHT UPRIGHT VACUUM CLEANER**  
SKU: 9VMH150000  
**AIR FLOW: 105 CFM**  
**WATER LIFT: 98"**  
**NOISE LEVEL: 68.2 dBA**  
**HP: 1.6 (10 AMPS)**

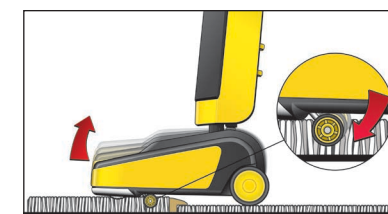
Also available with a 12" cleaning path (9VMH120000).



### ADVANTAGES OF DUAL MOTOR STRENGTH

Rubbermaid Power Height Upright Vacuum with two motors (1.6 hp vacuum motor and .2 hp brush roll motor) provides single-pass cleaning performance:

- **AUTOMATIC SHUT-DOWN**  
Brush roll motor automatically stops rotating when handle is in the upright position, protecting carpet.
- **AUTO-HEIGHT ADJUSTMENT**  
Eliminates interruption to manually change height positions for varying floor surfaces.

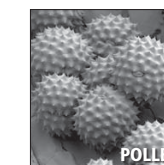
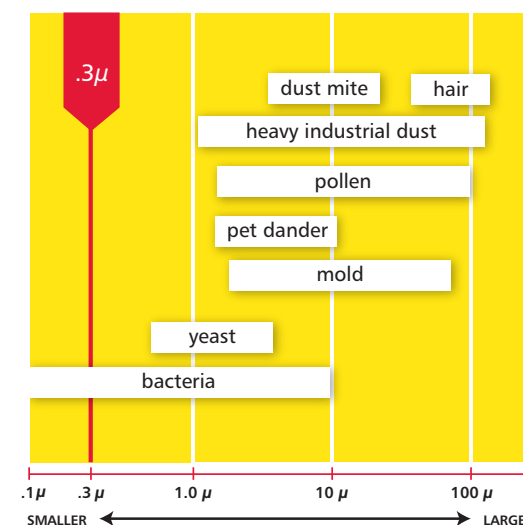


**POWER HEIGHT UPRIGHT VACUUM CLEANER**  
SKU: 9VPH150000  
**AIR FLOW: 105 CFM**  
**WATER LIFT: 98"**  
**NOISE LEVEL: 67.7 dBA**  
**TOTAL HP: 1.8 (11 AMPS)**

Also available with a 12" cleaning path (9VPH120000).



**HEPA**  
FILTERS TRAP  
**99.97%**  
of particles  
.3 microns or larger



# Smarter Cleaning

## DVAC 1 PASS CLEANING SOLUTION™

| No.                  | Description   | Bag Capacity | Product Weight | Pack |
|----------------------|---|--------------|----------------|------|
| 9VDVNP4400           | DVAC 1 Pass Cleaning Solution™ Power Nozzle Model w/ Deluxe Rim Caddy     | 6.5 qt       | 45.7 lb        | 1    |
| 9VDVSS4400           | DVAC 1 Pass Cleaning Solution™ Straight Suction Model w/ Deluxe Rim Caddy | 6.5 qt       | 41.2 lb        | 1    |
| 9VDVRC44             | Deluxe Rim Caddy (fits BRUTE® 44-Gallon only)                             |              | 8.25 lb        | 1    |
| 2643-60 <sup>A</sup> | BRUTE® 44-Gallon Utility Container  | 44 gal       | 11.8 lb        | 4    |
| 9VDVPB10             | Replacement Paper Bags (10 pack)  | 6.5 qt       |                | 10   |
| 9VDVHP10             | Replacement HEPA Bags (10 pack)   | 5.6 qt       |                | 10   |
| 9VDVEF44             | Replacement Exhaust Filter (10 pack)                                      |              |                | 10   |

<sup>A</sup> Available in Yellow, Red, Gray, Blue, and Black; contact your RCP representative for more information.

## POWER HEIGHT & MANUAL HEIGHT UPRIGHT VACUUM CLEANERS

| No.        | Description  | Bag Capacity | Product Weight | Pack |
|------------|--|--------------|----------------|------|
| 9VPH150000 | PH15 - 15" Power Height Upright Vacuum Cleaner                         | 5.63 qt      | 23.7 lb        | 1    |
| 9VPH120000 | PH12 - 12" Power Height Upright Vacuum Cleaner                         | 5.63 qt      | 23 lb          | 1    |
| 9VMH150000 | MH15 - 15" Manual Height Upright Vacuum Cleaner                        | 5.63 qt      | 20 lb          | 1    |
| 9VMH120000 | MH12 - 12" Manual Height Upright Vacuum Cleaner                        | 5.63 qt      | 19.4 lb        | 1    |
| 9VMHBA12   | Replacement Paper Bag for 9VPH12, 9VPH15, 9VMH12, 9VMH15 (10 pack)     | 5.63 qt      |                | 10   |
| 9VPEHF12   | Replacement Exhaust Filter for 9VPH12, 9VPH15, 9VMH12, 9VMH15          |              |                | 10   |
| 9VMHMF12   | Replacement Air Filter for 9VPH12, 9VPH15, 9VMH12, 9VMH15              |              |                | 10   |
| 9VMHHP     | HEPA Filter Kit for 9VPH12, 9VPH15, 9VMH12, 9VMH15 (8 bags & 1 filter) | 5.63 qt      |                | 6    |
| 9VPHBE12   | Replacement Timing Belt for 9VPH12, 9VPH15 (6 pack)                    |              |                | 6    |
| 9VMHBR12   | Replacement Brush Roll for 9VMH12                                      |              |                | 10   |
| 9VPHBR12   | Replacement Brush Roll for 9VPH12                                      |              |                | 10   |
| 9VMHBR15   | Replacement Brush Roll for 9VMH15                                      |              |                | 10   |
| 9VPHBR15   | Replacement Brush Roll for 9VPH15                                      |              |                | 10   |
| 9VMHBE12   | Replacement Brush Belt for 9VMH12 (6 pack)                             |              |                | 6    |
| 9VMHBL12   | Replacement Motor Belt for 9VMH12 (6 pack)                             |              |                | 6    |

## ULTRA LIGHT UPRIGHT VACUUM CLEANER

| No.        | Description                                   | Bag Capacity | Product Weight | Pack |
|------------|---|--------------|----------------|------|
| 9VUL120000 | UL12 - 12" Ultra Light Upright Vacuum Cleaner | 10.63 qt     | 9.7 lb*        | 1    |
| 9VULBC12   | Replacement Cloth Bag for 9VUL12              |              |                | 4    |
| 9VULPB12   | Replacement Paper Bag for 9VUL12 (10 pack)    | 10.63 qt     |                | 10   |
| 9VULBE12   | Replacement Belt for 9VUL12 (6 pack)          |              |                | 10   |
| 9VULBR12   | Replacement Brush Roll for 9VUL12             |              |                | 10   |

\* without cord

NOTE: All water lift measurements are with bare motor.

## TRADITIONAL UPRIGHT VACUUM CLEANERS

| No.         | Description  | Bag Capacity | Product Weight | Pack |
|-------------|--|--------------|----------------|------|
| 9VVCV160000 | CV16 - 16" Traditional Upright Vacuum Cleaner                  | 13.75 qt     | 18.6 lb        | 1    |
| 9VVCV120000 | CV12 - 12" Traditional Upright Vacuum Cleaner                  | 13.75 qt     | 18.2 lb        | 1    |
| 9VVCVBA12   | Replacement Cloth Dust Bag for 9VVCV12 & 9VVCV16 with CRI Tube |              |                | 8    |
| 9VVCVSB12   | Shake Out Bag for 9VVCV12, 9VVCV16                             |              |                | 8    |
| 9VVCVBE12   | Replacement Round Belt for 9VVCV12 & 9VVCV16 (6 pk)            |              |                | 10   |
| 9VVCVPB12   | Replacement Paper Bag for 9VVCV12 & 9VVCV16 (10 pk)            | 13.75 qt     |                | 10   |
| 9VVCVBR12   | Replacement Brush Roller for 9VVCV12                           |              |                | 10   |
| 9VVCVBR16   | Replacement Brush Roller for 9VVCV16                           |              |                | 10   |

## BACKPACK VACUUM CLEANERS

| No.        | Description   | Bag Capacity | Product Weight | Pack |
|------------|---|--------------|----------------|------|
| 9VBH100000 | 10 Qt Capacity HEPA Backpack Vacuum Cleaner               | 10 qt        | 13.5 lb**      | 1    |
| 9VBP100000 | 10 Qt Capacity Backpack Vacuum Cleaner                    | 10 qt        | 11.7 lb**      | 1    |
| 9VBPO60000 | 6 Qt Capacity Backpack Vacuum Cleaner                     | 6 qt         | 11.3 lb**      | 1    |
| 9VBPPB06   | Replacement Paper Bag for 9VBP06 (10 pack)                | 6 qt         |                | 10   |
| 9VBPHPO6   | HEPA Bag for 9VBP06 (10 pack)                             | 6 qt         |                | 6    |
| 9VBPBA06   | Replacement Cloth Bag for 9VBP06                          | 6 qt         |                | 10   |
| 9VBPEF06   | Replacement Exhaust Filter for 9VBP06, 9VBP10             |              |                | 10   |
| 9VBPHA06   | Replacement Backpack Harness for 9VBP06, 9VBP10, & 9VBH10 |              |                | 6    |
| 9VBPPB10   | Replacement Paper Bag for 9VBP10, 9VBH10 (10 pack)        | 10 qt        |                | 10   |
| 9VBPBA10   | Replacement Cloth Bags for 9VBP10, 9VBH10                 | 10 qt        |                | 10   |
| 9VBHHP10   | Replacement HEPA Filter for 9VBH10                        |              |                | 1    |
| 9VBPHS06   | Replacement Cleaner Hose for 9VBP06, 9VBP10, 9VBH10       |              |                | 10   |
| 9VBPEB06   | Backpack Belt Extender for 9VBP06, 9VBP10, 9VBH10         |              |                | 10   |
| 9VBPFT06   | Hard Floor Tool for 9VBP06, 9VBP10, 9VBH10                |              |                | 5    |

\*\* without tools

## WET & DRY VACUUM CLEANERS

| No.        | Description   | Product Weight | Pack |
|------------|---|----------------|------|
| 9VWD160000 | WD16 - 16 Gal Capacity Wet & Dry Vacuum Cleaner                         | 48 lb          | 1    |
| 9VWD120000 | WD12 - 12.5 Gal Capacity Wet & Dry Vacuum Cleaner                       | 46.8 lb        | 1    |
| 9VWDPF12   | Replacement HEPA Pleated Filter for 9VWD12 & 9VWD16 (with foam sleeves) |                | 10   |
| 9VWDF12    | Replacement Foam Filters for 9VWD12 & 9VWD16 (1 large & 1 small)        |                | 50   |
| 9VWDHS12   | Replacement Hose for 9VWD12 & 9VWD16 (12 ft)                            |                | 10   |

A **NewellRubbermaid** Company

©2009 by Rubbermaid Commercial Products LLC  
3124 Valley Avenue, Winchester, VA 22601  
10/09 MP 35M SM752

Printed on Recycled Paper 

Vacuum Customer Service: 1-866-524-5233  
www.rubbermaidvacuums.com

**Work Smarter.**

