



## STAINLESS STEEL ADD-A-TIER DRAWERS

Fits Under 24", 30" and 36" Wide Open Base Work Tables!

### FEATURES:

Units come Fully Assembled!  
Stainless Steel Drawers feature **SHD Series Drawers** with Integral drawer slides & removable stainless steel drawer inserts.  
Includes 2 or 3 drawers with 2 Concealed Side Panels (See Photos).  
Drawer "Safety Stop" tab.  
Mounts from underside of Open Base Table with Included Hardware.

### CONSTRUCTION:

All TIG welded.

### MECHANICAL:

Roller bearing slides, drawer enclosure and removable drawer inset.  
Self closing drawer with noise control.

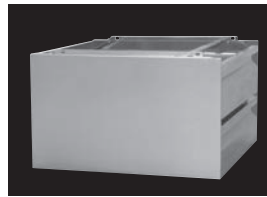
### MATERIAL:

Heavy gauge type 430 series stainless steel.



ADT-3-2020 SERIES SHOWN  
(Table not included)

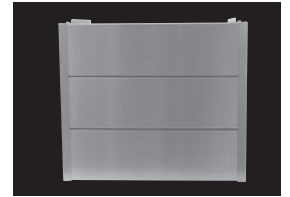
### INCLUDES 2 CONCEALED SIDE PANELS



2 Drawer Concealed Panel  
Model ADT-2-2020 Shown



3 Drawer Concealed Panel  
Model ADT-3-2020 Shown



Rear View of Stacked Drawers  
Drawer Seams Exposed

Model #	Description	Weight
ADT-2-2020	2 Tier Drawers	87 lbs.
ADT-3-2020	3 Tier Drawers	105 lbs.
ADT-3-2015	3 Tier Drawers	85 lbs.

## STAINLESS STEEL

# FACTORY INSTALLED "SHD SERIES" TIER DRAWERS

(FACTORY INSTALLATION ONLY)

### FEATURES:

3-Tier Drawers factory installed.  
1 5/8" diameter tubular stainless steel legs & gussets.  
Stainless Steel Drawers feature **SHD Series Drawers** with Integral Drawer Slides & removable stainless steel drawer inserts.  
Drawer "Safety Stop" tab.

### CONSTRUCTION:

All TIG welded.  
Legs bolt on to table base.

### MECHANICAL:

Roller bearing slides, drawer enclosure and removable drawer insert.  
Self closing drawer with noise control.

### MATERIAL:

Heavy gauge type 430 series stainless steel.  
LEGS are stainless steel and include 1 1/2" adjustable hex foot.

Model #	Description	Weight
TA-38	3-Tier Drawers	130 lbs.
TA-384	4-Tier Drawers	165 lbs.

For Tier Drawers on 24" Wide Enclosed Base Tables,  
Add TA-380 (Drawers will be 20" x 15" x 5")

New 4 Tier Unit Offers  
**33% Greater Storage, within the  
Same Overall Dimension!**



FEATURING BOLT-ON  
STAINLESS STEEL LEG



TA-38 SHOWN



Customer Service Available To Assist You 1-800-645-3166 8:30 am - 8:00 pm E.S.T.

For Orders & Customer Service:

Email: customer@advancetabco.com or Fax: 631-242-6900

For Smart Fabrication™ Quotes:

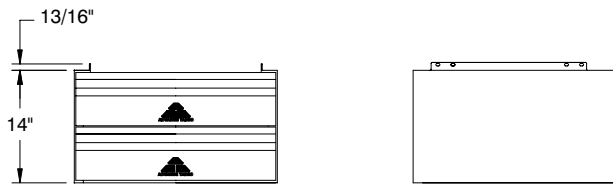
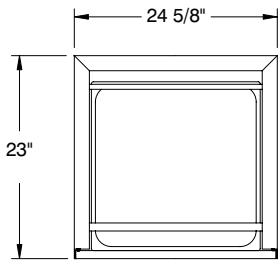
Email: smartfab@advancetabco.com or Fax: 631-586-2933

# DETAILS and SPECIFICATIONS

TOL ± .500"

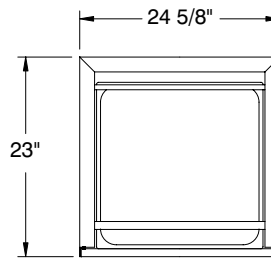
ALL DIMENSIONS ARE TYPICAL

## ADT-2-2020

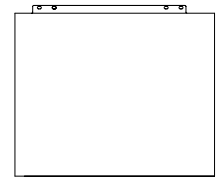
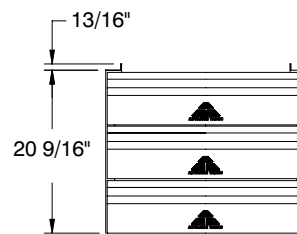
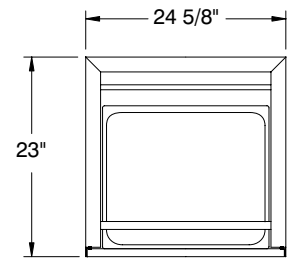


## ADT-3-2015 ADT-3-2020

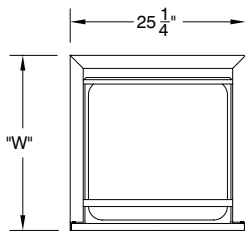
TOP VIEW OF  
ADT-3-2020



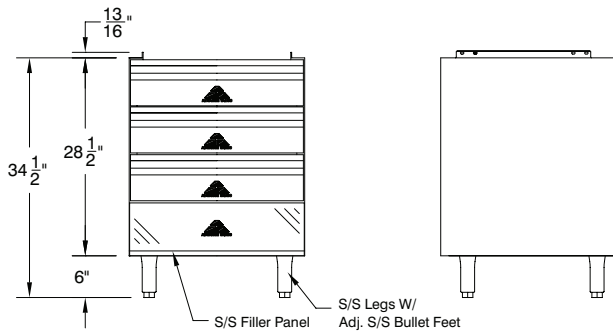
TOP VIEW OF  
ADT-3-2015



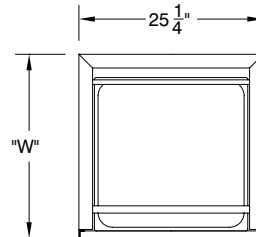
## TA-38 THREE TIER UNIT



"W" Dimension is  
Based on Table Width



## TA-384 FOUR TIER UNIT



"W" Dimension is  
Based on Table Width

