



STAINLESS STEEL OPEN BASE STYLE ENCLOSED BASE WORK TABLES



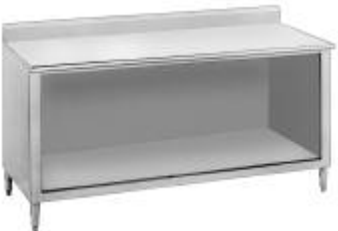
Item #: _____ **Qty #:** _____
Model #: _____
Project #: _____



Flat Top



1 1/2" Backsplash



5" Backsplash

FEATURES:

FLAT TOP is furnished with a 1 5/8" sanitary rolled rim on the front and 1 5/8" square bend edges on the 2 sides and rear.

1 1/2" SPLASH is furnished with a 1 5/8" sanitary rolled rim on the front side and 1 5/8" square bend edges on the 2 sides and a 1 1/2" splash of single metal thickness on the rear side.

5" SPLASH is furnished with a 1 5/8" sanitary rolled rim on the front side and 1 5/8" square bend edges on the 2 sides and a 5" splash with a 1" return on the rear side.

CONSTRUCTION:

All TIG welded. Exposed areas finished to match adjacent surfaces. Entire Top is mechanically polished to a satin finish and is sound deadened.

Hat section secured to Top reinforces and maintains level working surface.

UNIT-BODY DESIGN sides, back and fixed mid shelf are welded to form a single rigid structure.

Gussets welded to support hat sections.

MATERIAL:

TOP is 14 gauge stainless steel type "304" series with galvanized understructure.

BODY is 18 gauge stainless steel type "430" series.

LEGS are 1 5/8" diameter tubular stainless steel with stainless steel gussets and 1" adjustable stainless steel bullet feet.

24" WIDE

Length	FLAT TOP	1 1/2" SPLASH	5" SPLASH	Wt.
36"	EB-SS-243	EF-SS-243	EK-SS-243	200 lbs.
48"	EB-SS-244	EF-SS-244	EK-SS-244	240 lbs.
60"	EB-SS-245	EF-SS-245	EK-SS-245	280 lbs.
72"	EB-SS-246	EF-SS-246	EK-SS-246	325 lbs.
84"	EB-SS-247	EF-SS-247	EK-SS-247	365 lbs.
96"	EB-SS-248	EF-SS-248	EK-SS-248	415 lbs.
108"	EB-SS-249	EF-SS-249	EK-SS-249	455 lbs.
120"	EB-SS-2410	EF-SS-2410	EK-SS-2410	490 lbs.
144"	EB-SS-2412	EF-SS-2412	EK-SS-2412	560 lbs.

30" WIDE

Length	FLAT TOP	1 1/2" SPLASH	5" SPLASH	Wt.
36"	EB-SS-303	EF-SS-303	EK-SS-303	225 lbs.
48"	EB-SS-304	EF-SS-304	EK-SS-304	260 lbs.
60"	EB-SS-305	EF-SS-305	EK-SS-305	300 lbs.
72"	EB-SS-306	EF-SS-306	EK-SS-306	340 lbs.
84"	EB-SS-307	EF-SS-307	EK-SS-307	380 lbs.
96"	EB-SS-308	EF-SS-308	EK-SS-308	425 lbs.
108"	EB-SS-309	EF-SS-309	EK-SS-309	465 lbs.
120"	EB-SS-3010	EF-SS-3010	EK-SS-3010	515 lbs.
144"	EB-SS-3012	EF-SS-3012	EK-SS-3012	600 lbs.

36" WIDE

Length	FLAT TOP	1 1/2" SPLASH	5" SPLASH	Wt.
36"	EB-SS-363	EF-SS-363	EK-SS-363	250 lbs.
48"	EB-SS-364	EF-SS-364	EK-SS-364	290 lbs.
60"	EB-SS-365	EF-SS-365	EK-SS-365	330 lbs.
72"	EB-SS-366	EF-SS-366	EK-SS-366	375 lbs.
84"	EB-SS-367	EF-SS-367	EK-SS-367	415 lbs.
96"	EB-SS-368	EF-SS-368	EK-SS-368	460 lbs.
108"	EB-SS-369	EF-SS-369	EK-SS-369	505 lbs.
120"	EB-SS-3610	EF-SS-3610	EK-SS-3610	555 lbs.
144"	EB-SS-3612	EF-SS-3612	EK-SS-3612	625 lbs.

Mid Shelves Are Available.

To Add a Fixed Mid Shelf, Add "M" After each Model Number.
Upgrade to Adjustable Mid Shelf. Add TA-116.



Customer Service Available To Assist You **1-800-645-3166** 8:30 am - 8:00 pm E.S.T.

Email Orders To: customer@advancetabco.com. For Smart Fabrication™ Quotes, Email To: smartfab@advancetabco.com or Fax To: 631-586-2933

NEW YORK
Fax: (631) 242-6900

GEORGIA
Fax: (770) 775-5625

TEXAS
Fax: (972) 932-4795

NEVADA
Fax: (775) 972-1578

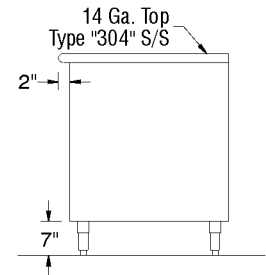
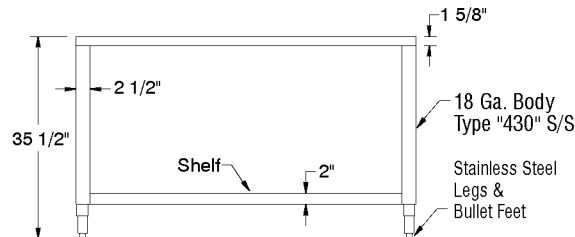
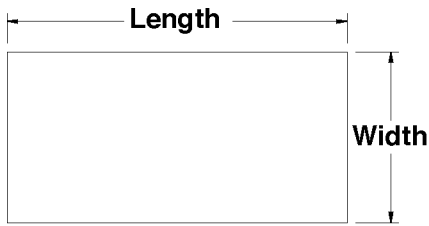
DETAILS and SPECIFICATIONS

TOL \pm .500"

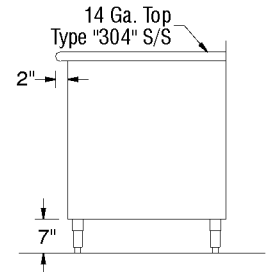
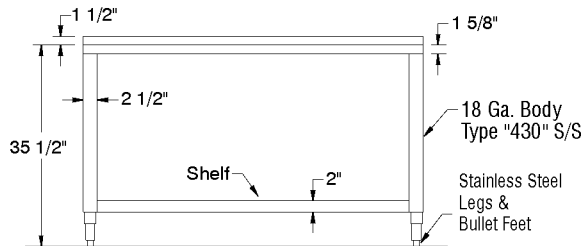
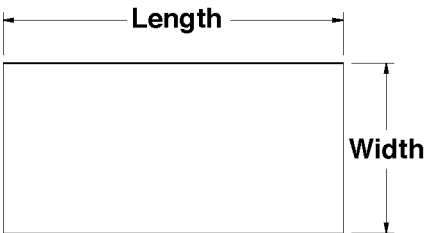
Units 7' and larger are furnished with 6 legs.

ALL DIMENSIONS ARE TYPICAL

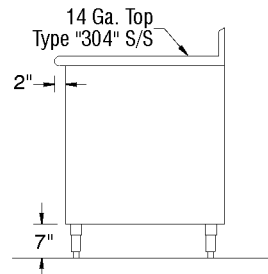
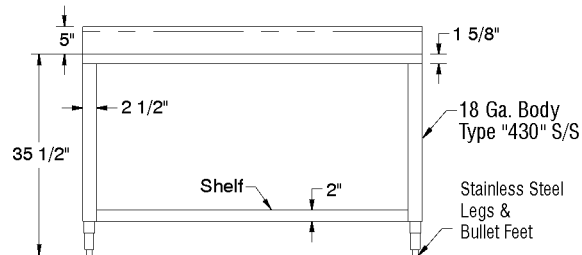
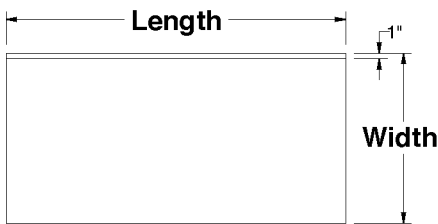
EB-Series Flat Top



EF-Series 1 1/2" Rear Splash



EK-Series 5" Rear Splash



OPTIONAL MID SHELF DETAILS

