

Item #: _____ **Qty #:** _____
Model #: _____
Project #: _____



LR4



LR2

FEATURES:

- Curved top design.
- Heavy duty welded construction with 6 cross supports.
- Heavy duty 5" stem bolted swivel casters.
- 1 1/2" Ribbed Angles.

CONSTRUCTION:

Fully welded 1" square tubing ladder assembly.

MATERIAL:

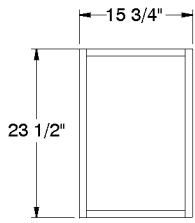
6063-T52 extruded aluminum angles, upright tubing, and support pieces.

MODEL #	Lug Capacity	Overall Size L x W x H	Wt.
LR6	6	19" x 26" x 69 3/4"	20 lbs.
LR4	4	19" x 26" x 52 3/4"	16 lbs.
LR2	2	19" x 26" x 31 3/4"	14 lbs.
LR1	1	15 3/4" x 23 1/2" x 18 3/4"	12 lbs.

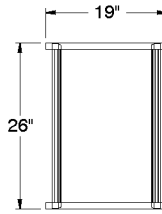
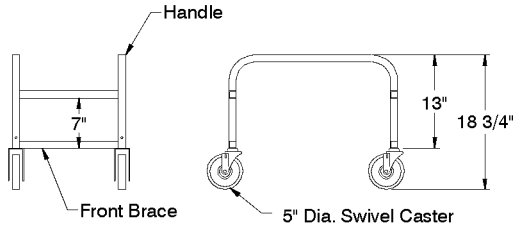
DIMENSIONS and SPECIFICATIONS

TOL ± .500"

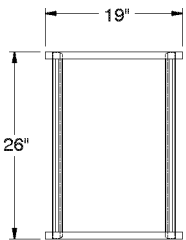
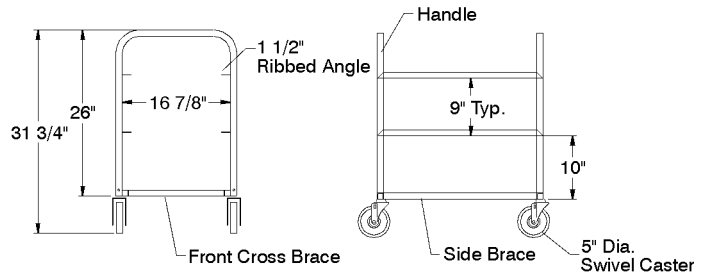
ALL DIMENSIONS ARE TYPICAL



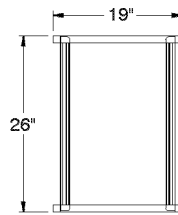
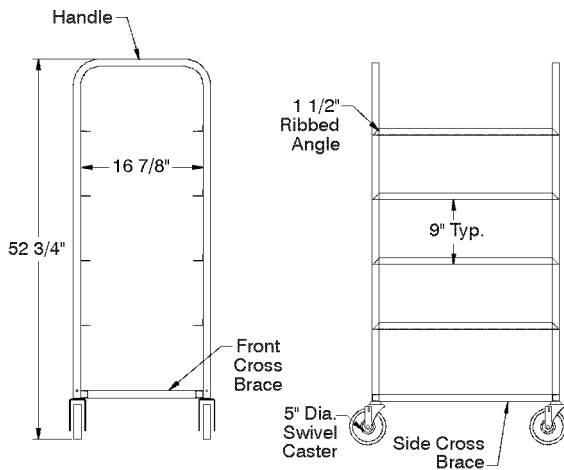
LR1



LR2



LR4



LR6

