



# Insulated Cold Food Wells Non-Refrigerated

Models  CFW-1  CFW-43 ("D": after model # designates drain)

PRODUCT:

QUANTITY:

ITEM:

## Designed Smart

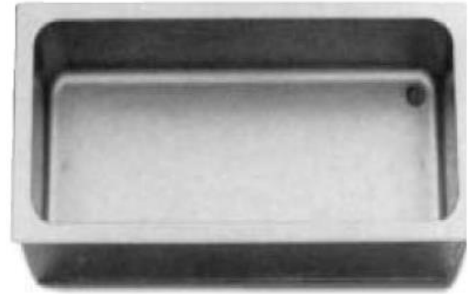
- CFW-1 (without drain)  CFW-1D (with drain)
- CFW-43 (without drain)  CFW-43D (with drain)

### Bid Specifications

Heavy-duty top mount Cold Food Well is constructed of deep-drawn austenite stainless steel. The aluminized outer housing is fully insulated on the sides and bottom. APW Wyott E-Z Locks make installation quick and easy. Unit shipped with drain are provided with stainless steel NPT drain welded to bottom of pan and provided with removable screen.

## APW Wyott Design Features

- Stainless steel well pans – One-piece, die-stamped.
- Outer housing – Aluminized. Fully insulated sides and bottom.
- Multiple units can be installed in same table or counter.
- Compact housing – overall depth 7 3/4".



Model: CFW-1

## Options

- Drain kit and shut-off valve (incl. 1/2" PVC and 3 ft. (91.4cm) of high temperature flexible hose. (56420)

## Reliability backed by APW Wyott's Warranty

APW Wyott Drop-In Cold Wells are backed by a 1-year parts and labor warranty, including on-site service calls within 50 miles of authorized service technicians.

## Certified by the following agencies:



See reverse side for product specifications.

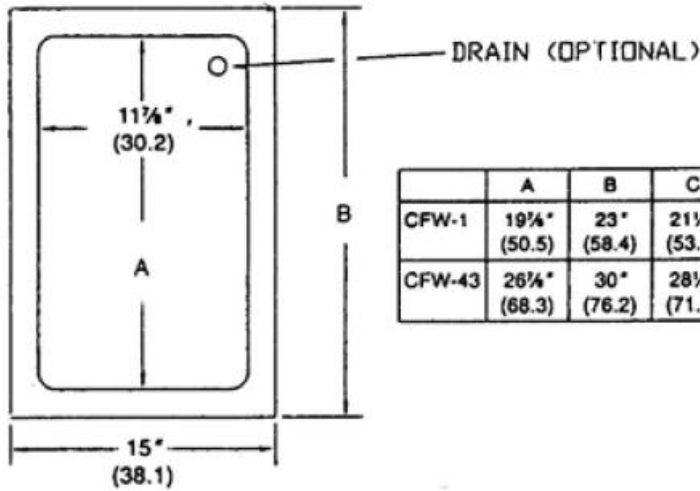


Models  CFW-1  CFW-43 ("D": after model # designates drain)

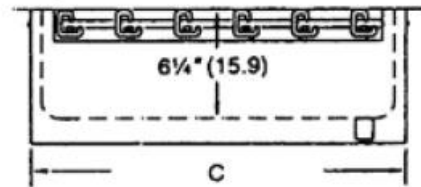
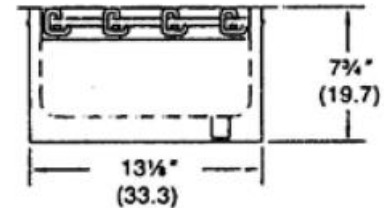
PRODUCT:

QUANTITY:

ITEM:



	A	B	C
CFW-1	19 1/4" (50.5)	23" (58.4)	21 1/4" (53.7)
CFW-43	26 1/4" (68.3)	30" (76.2)	28 1/4" (71.4)



(Centimeters in Parenthesis)

Model	Outside Dimensions (W x L x D)	Outside Dimensions (W x L x D)	Cutout (W x L)	Flange	Shipping Weight
CFW-1	15" x 23" x 7 3/4" (36.1 x 58.4 x 19.7cm)	11 7/8" x 19 7/8" x 6 1/4" (30.2 x 50.5 x 15.9cm)	13 3/4" x 21 3/4" (34.7 x 55cm)	1 9/16" (3.9cm)	24 lbs. (10.8kg)
CFW-3	15" x 30" x 7 3/4" (36.1 x 76.2 x 19.7cm)	11 7/8" x 26 3/4" x 6 1/4" (30.2 x 68.2 x 15.9cm)	13 3/4" x 22 5/8" (34.7 x 72.4cm)	1 9/16" (3.9cm)	29 lbs. (13kg)

**Drain Standard With Model No's:**

CFW-1D

CFW-43D

**Drain Location:** 1 11/16" x 1 11/16" from back right corner.

**Drain Couplings:** 1/2" NPT Stainless 1 1/2" Long

**Drain Kit:** Drain kit for all wells includes 1/2" PVC and 3 ft. of high temperature flexible hose.  
Stock # 56420. Ship Wt. 2lbs.

\*APW Wyott reserves the right to modify specifications or discontinue models without incurring obligation.