



CSHPT Pass-Thru

Coolscapes™ Heated Pass-Thru w/Glass Doors

Project _____

Item _____

Quantity _____

CSI Section 11400

Approved _____

Date _____

CSHPT Heated Pass-Thru w/ Glass Doors

Models

- CSHPT1-G CSHPT2-G
- CSHPT1-GH CSHPT2-GH



CSRPT1P-SH

Standard Features

- Digital exterior temperature display with high/low temp visual alarms
- Removable side louver
- Accommodates full size sheet pans
- Smart door hinge that auto closes up to 90° and stays open past 90°
- Patented, lifetime warranty integral door handle
- Energy efficient door gasket – removable without tools
- Door locks
- 5" locking casters shipped loose for field installation
- 10' cord and plug attached
- Stainless steel exterior front, sides & interior
- Field rehingable doors - full height doors only
- Stainless steel pilaster with shelf clips
- 3 shelves per section
 - Chrome standard
 - 115V / 60C / 1 P Standard

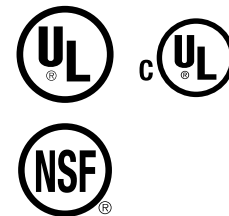
Options

- 6" Stainless steel feet
- 6" Casters (all locking)
- 6" Stainless Steel flanged feet
- Three drawers in place of 1 Half Door (bottom section only)
- Additional chrome shelves
- Stainless steel shelves
- Tray/Pan Slides – various
- Utility base
- Kick plate
- Laminate – front, ends, shroud
- Heat shield end – max temp 400 degrees
- Trim strips
- Foot Pedal Door Opener

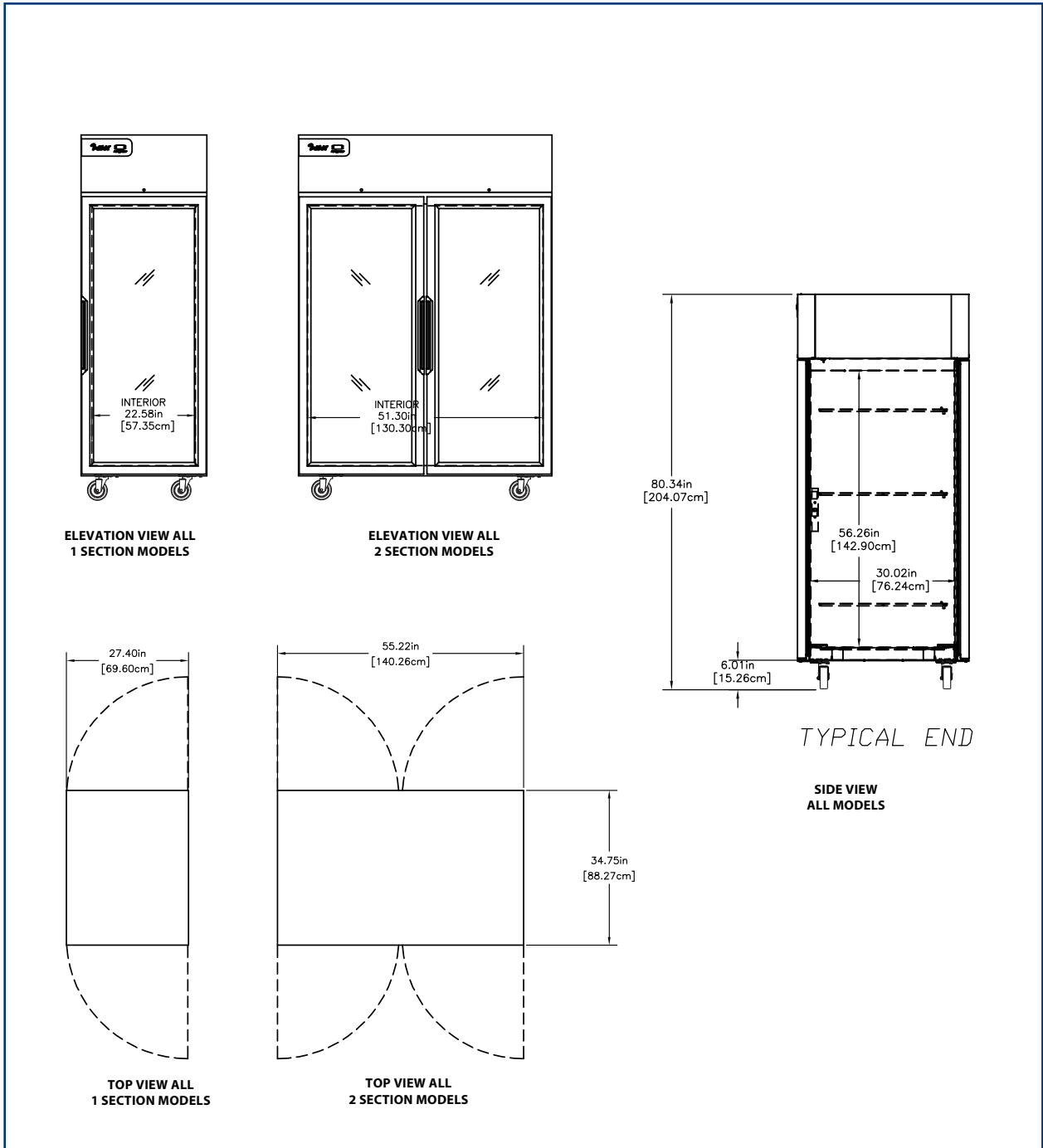
Specifications

Heating system: All components are mounted to the top cabinet ceiling, outside the food zone. Cabinets are designed to maintain temperatures between 120°F and 200°F. Heating elements are located behind the vertical ducts. The design of the heater, which is full length of the vertical duct, allows for optimal air flow and energy efficiency. Fan motor is mounted outside of the heated compartment. System is controlled using an electronic temperature control.

Units are completely insulated with high density foamed in place environmentally friendly, Kyoto Protocol Compliant, Non ODP (Ozone Depletion Potential), Non GWP (Global Warming Potential) polyurethane.



CSHPT Heated Pass-Thru w/ Glass



Specifications									
Model	V/Hz/Ph	Amps	Volume Cu. Ft.	SHELF CAPACITY SQ. FT.	No. of Shelves	Unit H.P.	Btu/Hr System Cap	Ship Weight	Nema Plug
CSHPT1-G CSHPT1-GH	208-240/60/1	6	23	11.5	3	N/A			6-20P
CSHPT2-G CSHPT2-GH	208-240/60/1	10.5	50	25.5	6	N/A			6-20P

Delfield reserves the right to make changes to the design or specifications without prior notice.