

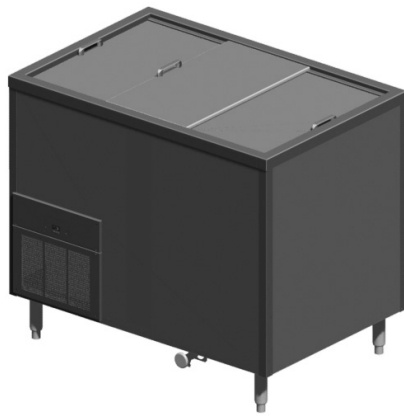
N

Free-Standing Self-Contained Milk or Beverage Dispensers

Project _____
 Item _____
 Quantity _____
 CSI Section 11400
 Approved _____
 Date _____

Models

- N-520 29" x 28" x 36" dispenser, 240 half pint carton capacity
- N-860 42" x 28" x 36" dispenser, 408 half pint carton capacity
- N-1200 55" x 28" x 36" dispenser, 576 half pint carton capacity
- N-1530 68" x 28" x 36" dispenser, 744 half pint carton capacity



N-860

Standard Features

- Six anodized aluminum divider trays per opening except opening over compressor, (2) supplied over compressor
- Refrigeration system shall be HFC-134A refrigerant
- Insulated with environmentally friendly, Kyoto Protocol Compliant, Non ODP (Ozone Depletion Potential), Non GWP (Global Warming Potential) polyurethane insulation
- One year parts and 90 day labor standard warranty

Options & Accessories

- Wrap-around bumpers (adds 1.75" to length and depth)
- (4) 5" diameter casters (heavy-duty polyurethane) with corner bumpers (4 locking; adds 1.75" to length and depth)
- Lid locking device
- Dial-style or digital-style thermometer
- Laminate side panels
- Fiberglass side panels
- 220 volt, 50/60 cycle, single phase electrical connections*
- Wire baskets
- Stainless steel divider tray
- Adjustable height casters

* Inclusion of these options will alter the electrical specifications of unit

Specifications

Exterior sides shall be 22-gauge stainless steel. Top and corner supports shall be 14-gauge stainless steel, welded, ground and polished into one integral unit.

Inner liner shall be water-tight and constructed of 22-gauge stainless steel with 1.25" (3cm) I.P.S. drain. Unit shall be insulated with high-density, foamed in place environmentally friendly, Kyoto Protocol Compliant, Non ODP (Ozone Depletion Potential), Non GWP (Global Warming Potential) polyurethane insulation with a non-conductive to breaker strip.

Each opening shall have a stainless steel sliding lid with 4" (10 cm) chrome handles.

Three stainless steel louvers shall be installed in the end and sides of the cabinet to allow proper air flow to the condensing unit.

Each self-leveling mechanism shall be field adjustable by adding or removing stainless steel extension springs in the elevator housing inside the unit. The elevators shall be connected by removable platform carriers constructed of 18-gauge stainless steel.

Six anodized aluminum divider trays will be supplied per deep cabinet section. Two anodized aluminum divider trays will be supplied for shallow cabinet section over the machine compartment. See chart on back for milk storage capacity.

Refrigeration system shall use HFC-134a refrigerant. Refrigerant flow shall be controlled by an expansion valve. Cabinet shall maintain 36°F to 40°F (2°C to 4°C) temperature with lids closed for storage.

Refrigeration system shall be controlled by a pressure control, located near the condensing unit.

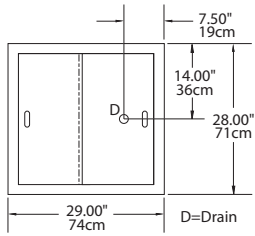
Electrical connections shall be 115 volt, 60 cycle, single phase. Unit shall have a 9' (2.7m) long electrical cord and NEMA 5-15P plug.

Unit shall be mounted on 6.00" (15cm) high adjustable stainless steel legs.

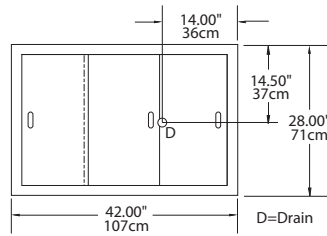
This equipment is intended for storage and /or display of pre-packaged or bottled products only.



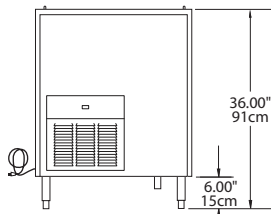
N: Free-Standing Self-Contained Milk or Beverage Dispensers



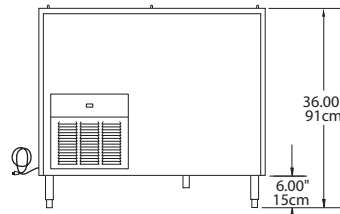
Plan View
N-520



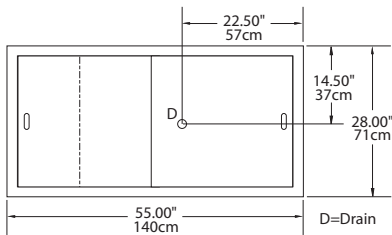
Plan View
N-860



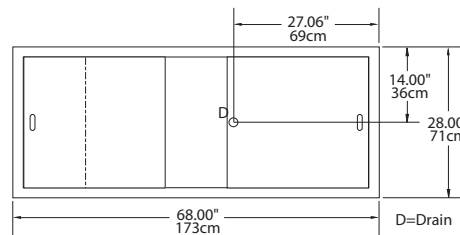
Elevation View
N-520



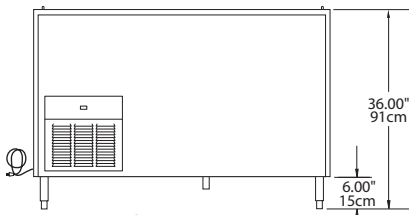
Elevation View
N-860



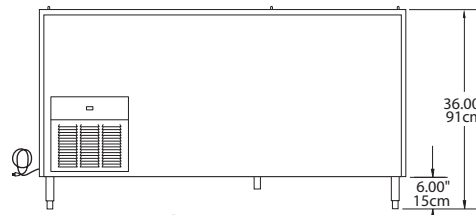
Plan View
N-1200



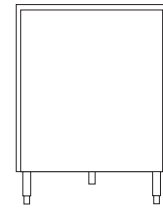
Plan View
N-1530



Elevation View
N-1200



Elevation View
N-1530



End View
All Models

Specifications

| Model | Capacity (half pint cartons) | H.P. | Amps | Volts/Hertz/Phase | BTU Load | BTU Capacity | NEMA Plug | Ship Weight | Energy (KWH) |
|--------|------------------------------|------|------|-------------------|----------|--------------|-----------|---------------|--------------|
| N-520 | 240 | 1/4 | 5.0 | 120/60/1 | 190 | 1040 | 5-15P | 327lbs/ 148kg | 2.60 |
| N-860 | 408 | 1/4 | 5.0 | 120/60/1 | 260 | 1170 | 5-15P | 392lbs/ 178kg | 2.60 |
| N-1200 | 576 | 1/4 | 5.0 | 120/60/1 | 330 | 1270 | 5-15P | 462lbs/ 210kg | 2.60 |
| N-1530 | 744 | 1/4 | 5.0 | 120/60/1 | 400 | 1360 | 5-15P | 532lbs/ 241kg | 2.60 |

Delfield reserves the right to make changes to the design or specifications without prior notice.