



Project _____
 Item # _____
 Quantity _____

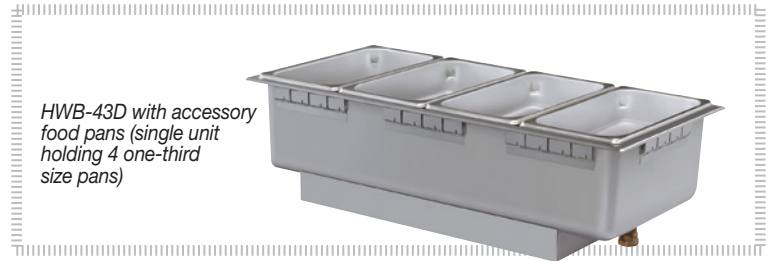
Drop-In 4/3-Size Heated Wells

Models: HWBL-43, -43D, -43DA
 HWBLI-43, 43D
 HWB-43, 43D, 43DA
 HWBI-43, -43D
 HWBH-43, -43D, -43DA
 HWBHI-43, -43D

Convenient 4/3-Sized Wells hold heated foods at safe serving temperatures. Like the full-size models, Hatco units offer a larger drain, more consistent holding temperatures, heavier stainless steel construction, easier-to-service design for quick change of components, and a remote thermostat with separate power switch.

Standard features

- Rectangular 4/3-Size Wells, uninsulated or insulated
- Superior thermostat controls that read the actual temperature of the well and add heat only if needed
- Controls feature a separate lighted ON/OFF rocker switch and temperature dial, allowing preset temperatures to be maintained
- Low (120V only), Standard and High Watt
- Available with or without a drain (easy to clean with larger drain and flat screen)
- Easy access design allows for quick element or thermostat change
- Accessory mounting kits for combustible countertops available
- Accessory adapters to convert 4/3-Size Wells to hold round pans available



HWB-43D with accessory food pans (single unit holding 4 one-third size pans)

Options (available at time of purchase only)

- Additional Power Supply Lead Wire available in one foot (305 mm) increments (Lead wire only – conduit not included) (Models are shipped with 1' [305 mm] of lead wire – no conduit included)
- Control Box (Options not available for Auto-fill):
 - Standard (Compact) Thermostat with 6' (1829 mm) Capillary
 - ITC Control with Large Control (Not available for low watt, auto-fill configurations or units without a drain)
 - Larger Recessed Thermostatic Control (Standard for 220/240V and not available for auto-fill configurations)
 - WM Control Assembly Replacement (Not available for export models or auto-fill)
- Control Box Bezel in Designer Colors for WM Control Assembly or Flush Mount only: (Non-standard colors are non-returnable)
 - Warm Red Black Gray Granite White Granite
 - Navy Blue Hunter Green Antique Copper
- Left or Right Water Fill Hole for HWBL-, HWB-, HWBH-43DA only (Front is standard)
 - Right Left

Accessories

- Rectangular Full-Size Stainless Steel Food Pans:
 - Third-Size (2.5" [64 mm] H) Half-Size (2.5" [64 mm] H)
 - Full-Size (2.5" [64 mm] H) Full-Size (4" [101 mm] H)
 - Full-Size (6" [152 mm] H)
- Round Food Pans:
 - 11 Quart (10 Liter)
- Hinged Lid for Round Pans:
 - 11 Quart (10 Liter)
- Notched Lid for Round Pans:
 - 11 Quart (10 Liter)
- Stainless Steel Wire Trivets:
 - Half-Size Full-Size
- Plated Wire Trivets:
 - Half-Size Full-Size
- Adapter to Convert Warmers to hold Round Pans which holds two 11-Quart (10-Liter) Inserts
- Support Bars:
 - 12" (305 mm) 20" (508 mm)
- Mounting Kit for Combustible Countertops
- 3/4" Ball Valve for Unit with Drains
- 3/4" Gate Valve for Unit with Drains
- Heated Well Remote Handle for 3/4" drains (Includes a Ball Valve)



HATCO CORPORATION | P.O. Box 340500 Milwaukee, WI 53234-0500 U.S.A.
 (800) 558-0607 | (414) 671-6350 | www.hatcocorp.com | support@hatcocorp.com



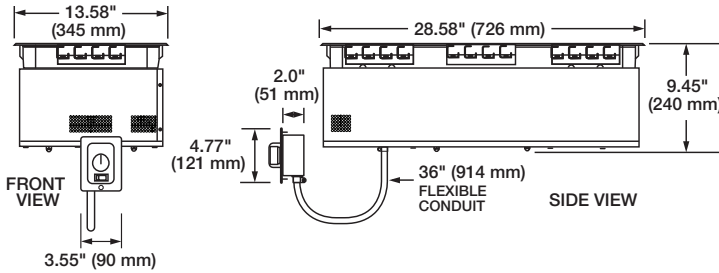
Drop-In 4/3-Size Heated Wells

Models: HWBL-43, -43D, -43DA, HWBLI-43, -43D, HWB-43, -43D, -43DA, HWBI-43, -43D, HWBH-43, -43D, 43DA, HWBHI-43, -43D

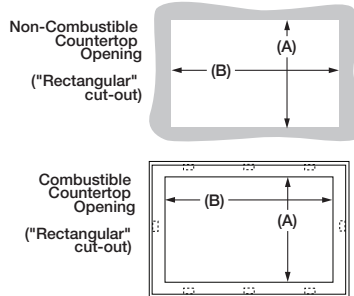
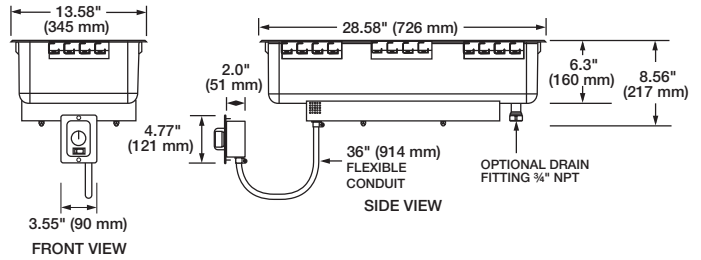
Ordering Instructions *(Please specify the following with each order)*

1. **Desired Voltage:** 120, 208, 220 or 240V
(export voltage available)
2. **Base Size of Heated Well**
A. 12" x 27" (305 x 686 mm)
3. **Drain** (With or without)
4. **Auto-fill** (With or without)
Location on HWB-43DA only
5. **Insulated or Uninsulated**
6. **Wattage**
A. High Watt
B. Standard Watt
C. Low Watt (120V only)
7. **Agency:**
A. UL, C-UL
B. UL-EPH (Sanitary listing)
C. CE mark available

HWBI-43 Series (Insulated)



HWB-43 Series (Uninsulated)



Cutout Dimensions for Non-Combustible Countertops

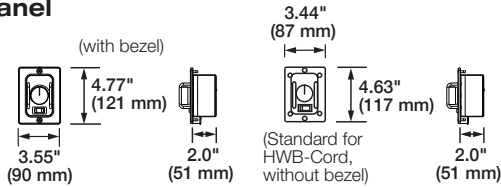
| Model | Minimum Width (A) | Maximum Width (A) | Minimum Depth (B) | Maximum Depth (B) |
|----------------------|-------------------|-------------------|-------------------|-------------------|
| HWB-, HWBI-43 Series | 12.69" (322 mm) | 12.94" (329 mm) | 27.69" (703 mm) | 28.00" (711 mm) |

Cutout Dimensions for Combustible Countertops ▲

| Model | Minimum Width (A) | Maximum Width (A) | Minimum Depth (B) | Maximum Depth (B) |
|----------------------|-------------------|-------------------|-------------------|-------------------|
| HWB-, HWBI-43 Series | 14.00" (356 mm) | 14.25" (362 mm) | 29.00" (737 mm) | 29.25" (743 mm) |

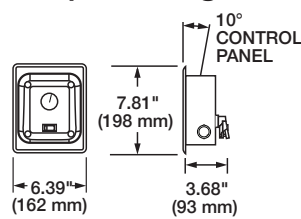
▲ Accessory Mounting Kit required for Top Mounts

Standard Control Panel

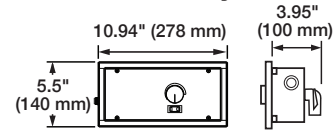


Thermostatic

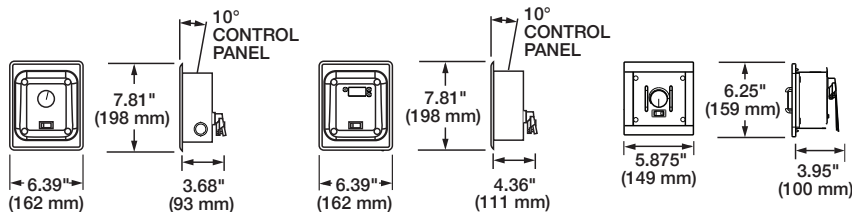
Standard Control Panel for Export Voltages Only



Standard Control Panel for Auto-fill Only



Optional Control Panels (not available for auto-fill)



Optional ITC Electronic (not available for low watt units and only for units with a drain)

WM Assembly Replacement (not available for International Models)

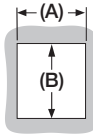


Drop-In 4/3-Size Heated Wells

Models: HWBL-43, -43D, -43DA, HWBLI-43, -43D, HWB-43, -43D, -43DA, HWBI-43, -43D, HWBH-43, -43D, 43DA, HWBHI-43, -43D

Cutout Dimensions for Control Boxes

Control Box Opening
(Larger Recessed
Thermostatic shown)



| Control Box | Minimum Width (A) | Maximum Width (B) | International Models |
|---|-------------------|-------------------|----------------------|
| Standard Thermostatic without bezel | 2.16" (55 mm) | 3.375" (86 mm) | Not available |
| Standard Thermostatic with bezel | 3.25" (83 mm) | 3.75" (95 mm) | Not available |
| Optional Larger Recessed Thermostatic | 5.875" (149 mm) | 6.375" (162 mm) | Standard |
| Optional ITC Electronic (not available for 4-QT [4-Liter]) | 5.875" (149 mm) | 6.375" (162 mm) | Optional |
| Optional WM Assembly Replacement | 4.78" (121 mm) | 5.00" (127 mm) | Not available |

Drop-In 4/3-Size Heated Well Models

The shaded areas contain electrical information for International models only

| | Model | Dimensions (Width x Depth x Height) | Volts | Phase | Watts | Amps | Control Configuration | | Ship Weight* | | | |
|---------------|---------------------|---|---|---|---|--------|-----------------------|---|---|--------------------|-----------------|-----------------|
| | | | | | | | Standard | Optional | | | | |
| Low Watt | HWBL-43 | 13.58" x 28.58" x 8.56" (345 x 726 x 217 mm) | 120 | Single | 750 | 6.3 | Compact | WM Assembly or Larger Recessed | 30 lbs. (14 kg) | | | |
| | HWBL-43D | | | | | | | | 24 lbs. (11 kg) | | | |
| | HWBL-43DA | | | | | | 36 lbs. (16 kg) | | | | | |
| | HWBLI-43 | 13.58" x 28.58" x 9.45" (345 x 726 x 240 mm) | 120 | Single | 750 | 6.3 | Compact | WM Assembly or Larger Recessed | 38 lbs. (17 kg) | | | |
| | HWBLI-43D | | | | | | | | 31 lbs. (14 kg) | | | |
| Standard Watt | HWB-43 HWB-43D | 13.58" x 28.58" x 8.56" (345 x 726 x 217 mm) | 120 | Single | 1200 | 10.0 | Compact | WM Assembly, Larger Recessed or ITC Control | 24 lbs. (11 kg) | | | |
| | | | 208 | | | | | | | | | |
| | | | 240 | | | | | | | | | |
| | | | HWB-43DA | 13.58" x 28.58" x 8.56" (345 x 726 x 217 mm) | 120 | Single | 1215 | 10.1 | Auto-fill | None | 27 lbs. (12 kg) | |
| | | | | | | | | | | | | 208 |
| | | | | | | | | | | | | 240 |
| | | | | | | | | | | | | 220 |
| | 240 | | | | | | | | | | | |
| | HWBI-43 HWBI-43D | 13.58" x 28.58" x 9.45" (345 x 726 x 240 mm) | 120 | Single | 1200 | 5.5 | Larger Recessed | ITC Control | 30 lbs. (14 kg) | | | |
| | | | | | | | | | | 208 | | |
| | | | | | | | | | | 240 | | |
| | High Watt | HWBH-43 HWBH-43D | 13.58" x 28.58" x 8.56" (345 x 726 x 217 mm) | 120 | Single | 1650 | 13.8 | Compact | WM Assembly, Larger Recessed or ITC Control | 24 lbs. (11 kg) | | |
| | | | | 208 | | | | | | | | |
| | | | | 240 | | | | | | | | |
| | | | | HWBH-43 HWBH-43D | 13.58" x 28.58" x 8.56" (345 x 726 x 217 mm) | 120 | Single | 1650 | 7.5 | Larger Recessed | ITC Control | 25 lbs. (11 kg) |
| 220 | | | | | | | | | | | | |
| 240 | | | | | | | | | | | | |
| 220-230 (CE) | | | | | | | | | | | | |
| 230-240 (CE) | | | | | | | | | | | | |
| 1650-1803 | | | | | | | | | | | | |
| 1515-1650 | | | | | | | | | | | | |
| 7.5-7.8 | | | | | | | | | | | | |
| 6.6-6.9 | | | | | | | | | | | | |



Drop-In 4/3-Size Heated Wells

Models: HWBL-43, -43D, -43DA, HWBLI-43, -43D, HWB-43, -43D, -43DA, HWBI-43, -43D, HWBH-43, -43D, 43DA, HWBHI-43, -43D

Drop-In 4/3-Size Heated Well Models

The shaded areas contain electrical information for International models only

| | Model | Dimensions (Width x Depth x Height) | Volts | Phase | Watts | Amps | Control Configuration | | Ship Weight* |
|--------------|-----------------------|---|--------------|--------|-----------|--------------------|-----------------------|---|-----------------|
| | | | | | | | Standard | Optional | |
| High Watt | HWBH-43DA | 13.58" x 28.58" x 8.56" (345 x 726 x 217 mm) | 120 | Single | 1665 | 13.9 | Auto-fill | None | 30 lbs. (14 kg) |
| | | | 208 | | | 8.0 | | | |
| | | | 240 | | | 6.9 | | | |
| | | | 220 | Single | 1665 | 7.6 | Auto-fill | None | |
| | | | 240 | | | 6.9 | | | |
| | | | 220-230 (CE) | | | 1663-1817 | | | |
| | 230-240 (CE) | 1530-1665 | 6.6-6.9 | | | | | | |
| | HWBHI-43 HWBHI-43D | 13.58" x 28.58" x 9.45" (345 x 726 x 240 mm) | 120 | Single | 1650 | 13.8 | Compact | WM Assembly, Larger Recessed or ITC Control | 31 lbs. (14 kg) |
| | | | 208 | | | 7.9 | | | 30 lbs. (14 kg) |
| | | | 240 | | | 6.9 | | | |
| 220 | | | Single | 1650 | 7.5 | Larger Recessed | ITC Control | | |
| 240 | | | | | 1650-1803 | | | 7.5-7.8 | |
| 220-230 (CE) | | | | | 1515-1650 | | | 6.6-6.9 | |
| 230-240 (CE) | | | | | | | | | |

PRODUCT SPECS Drop-In 4/3-Size Heated Well

The Drop-In 4/3-Size Heated Well shall be a Model ...as manufactured by the Hatco Corporation, Milwaukee, WI 53234 U.S.A.

Drop-in 4/3-Size Heated Well shall be rated at ...watts, ...volts, and be...inches (millimeters) in overall width and be ...inches (millimeters) in overall depth. It shall consist of stainless and aluminized steel housing with a metal sheathed heating

element, EZ locking hardware for installation, and a remote thermostat with lighted power switch.

Accessories may include stainless steel mounting kit, adapter top, support bars, food pans, trivets, remote handle and valves.

Warranty consists of 24/7 parts and service assistance (US and Canada only).

=====

HATCO CORPORATION | P.O. Box 340500 Milwaukee, WI 53234-0500 U.S.A.
 (800) 558-0607 | (414) 671-6350 | www.hatcocorp.com | support@hatcocorp.com