



## MB MASTER-BILT<sup>®</sup>

### DELI-MASTER<sup>®</sup>

## DMS/DMS-L SERIES

### Deli/Display Merchandisers

#### HIGH PROFILE MODELS

- DMS-48
- DMS-72
- DMS-96

#### LOW PROFILE MODELS

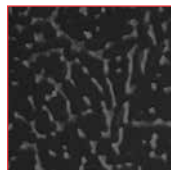
- DMS-48L
- DMS-72L
- DMS-96L

### FEATURES

#### STANDARD TEXTURED FINISH



Standard white



Black also available

#### CLASSIFIED TO NSF STANDARDS FOR FOOD ZONE REQUIREMENTS

##### Benefits of this classification:

- Allows the storing of food in open containers, pans and platters
- Reduced packaging costs
- Quicker, more convenient service to customers

#### CONSTRUCTION

- 24 gauge painted textured steel exterior
- Stainless steel top and floor
- Triple pane front display glass
- Two tiers of heavy-duty, epoxy-coated, welded wire shelving on high profile models, one tier on low profile models
- Standard 1" floor drain
- Automatic condensate evaporator
- Coated gravity evaporator coil
- Upper interior features full length front and rear T-8 fluorescent lights with electronic ballast
- Adjustable, timer-controlled defrost cycle
- 1<sup>3</sup>/<sub>4</sub>" foamed-in-place "zero ODP" urethane insulation

#### DOORS

- Self-closing, sliding dual pane rear service doors

#### REFRIGERATION

- Self-contained, hermetic condensing unit
- Front condenser air intake and rear discharge
- Refrigerant: R-134a
- Temperature range: 34° to 41°F (1° to 5°C)
- R-factor (insulation efficiency rating): 15.08

#### WARRANTY

- Standard limited two year parts and labor
- Additional three year coverage on compressor part

#### OPTIONS

- Add suffix "F" for front sliding doors
- Custom colors
- Casters
- Leg kit
- Ice pans for fish and seafood

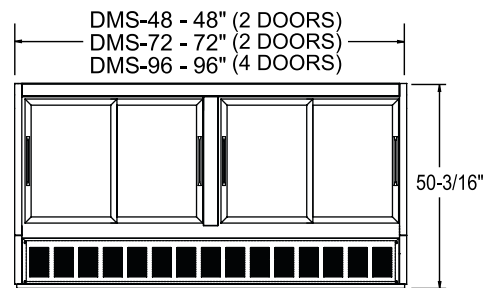
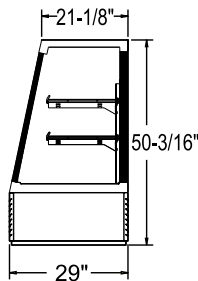
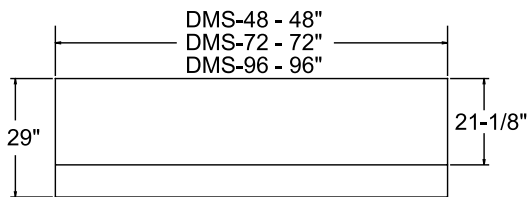


# DMS/DMS-L SERIES DELI/DISPLAY MERCHANDISERS

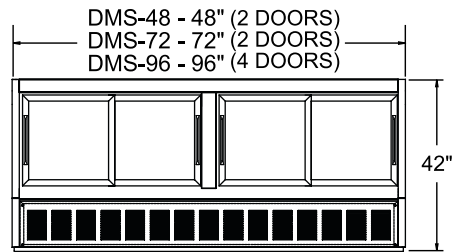
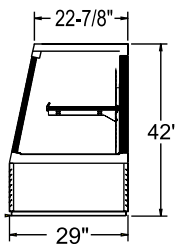
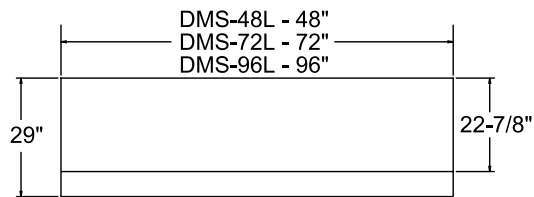
## TECHNICAL SPECIFICATIONS

MODEL	DIMENSIONS (in.)			DIMENSIONS (mm)			VOLTS	AMPS	UNIT H.P.	NO. OF SHELVES	NO. OF DOORS	STANDARD SHELF SIZE (in inches)	DISPLAY AREA SQ. FT.	SHIP CU. FT.	SHIP WT. LB/KG
	L	D	H	L	D	H									
<b>HIGH PROFILE</b>															
DMS-48	48	29	50 <sup>3/16</sup>	1219	737	1275	115	3.5	1/3	2	2	19 x 43 <sup>1/2</sup>	19.0	58.0	405/184
DMS-72	72	29	50 <sup>3/16</sup>	1829	737	1275	115	7.0	1/3	2	2	19 x 67 <sup>1/2</sup>	29.0	85.0	535/243
DMS-96	96	29	50 <sup>3/16</sup>	2438	737	1275	115	9.1	1/2	4	4	19 x 43 <sup>1/2</sup>	39.5	108.0	760/345
<b>LOW PROFILE</b>															
DMS-48L	48	29	42	1219	737	1067	115	3.5	1/3	1	2	19 x 43 <sup>1/2</sup>	14.9	58.0	365/166
DMS-72L	72	29	42	1829	737	1067	115	7.0	1/3	1	2	19 x 67 <sup>1/2</sup>	22.9	85.0	485/220
DMS-96L	96	29	42	2438	737	1067	115	9.1	1/2	2	4	19 x 43 <sup>1/2</sup>	30.9	108.0	680/309

### DMS MODELS



### DMS-L MODELS



PLAN VIEW

SIDE VIEW

ELEVATION VIEW

### LISTINGS



### HOOKUP

Via plug in, 10 foot long, flexible 3 wire 16/3 cord with molded plug.



### BID SPECIFICATIONS

Item no. DMS \_\_\_\_\_ and/or DMS- \_\_\_\_\_ L  
Provide \_\_\_\_\_ ( ) High Profile Deli/ Display Merchandiser(s), Master-Bilt model no. DMS- \_\_\_\_\_ and/or ( ) Low Profile Deli/Display Merchandiser(s), Master-Bilt model no. DMS- \_\_\_\_\_ L.

Merchandiser to feature textured finish on interior and exterior. All models to be provided with triple pane front display

glass, a stainless steel top and interior floor and self-closing sliding rear doors. Interior shelving is to be heavy-duty, welded wire epoxy-coated. The finish is to be white polyester enamel interior and exterior.

Merchandiser also to have coated gravity evaporator coil and automatic condensate evaporator. The refrigeration system is to be self-contained with front condenser

air intake and rear discharge. Temperature range will be 34° to 41°F (1° to 5°C). System will use R-134a refrigerant.

Merchandiser warranty to be standard limited two year parts and labor with additional three year coverage on compressor part.

Merchandiser to be UL and C-UL listed, UL-EPH classified and classified to NSF standards for food zone requirements.

**NOTE:** Cabinet designed for optimum performance in air-conditioned area at 75°F ambient and 55% relative humidity. All specifications subject to change without notice.



908 Highway 15 North • New Albany, MS 38652  
PHONE: 800-647-1284 or 662-534-9061 • FAX: 800-232-3966 or 662-534-6049 • www.master-bilt.com

