

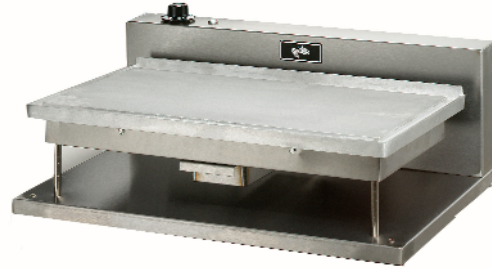


## PORTABLE GRIDDLE

### Model BG3

#### Features/Benefits:

- ★ Star's portable griddle cooks a variety of menu items while saving time and space.
- ★ Model BG3 is perfect for warming tortillas or can be added to a buffet line for front-of-the-house cooking.
- ★ Compact design requires only 24" of counter space and 120V operation plugs in anywhere.
- ★ Cast aluminum griddle plate for fast heat up, even heat distribution and fast recovery time.
- ★ Adjustable thermostat provides accurate temperature control ranging from 100°F to 425°F.
- ★ A rear grease trough and removable stainless steel grease drawer are standard.
- ★ All stainless steel housing for quick and easy clean up.



Model BG3

#### Applications:

Star's compact griddle is ideal for short order and medium output food service operations. From breakfast items to lunch and dinner menu items, this compact grill will fulfill your grilling requirements.

#### Quality Construction:

Star's portable griddle has stainless steel housing and a 3/8" thick aluminum griddle plate with grease trough. Stainless steel tubular elements total 1750 watts with an adjustable 100°F to 425°F thermostat. A positive off position and indicator light are standard. Unit comes complete with 6' lead-in cord and NEMA plug.

#### Warranty:

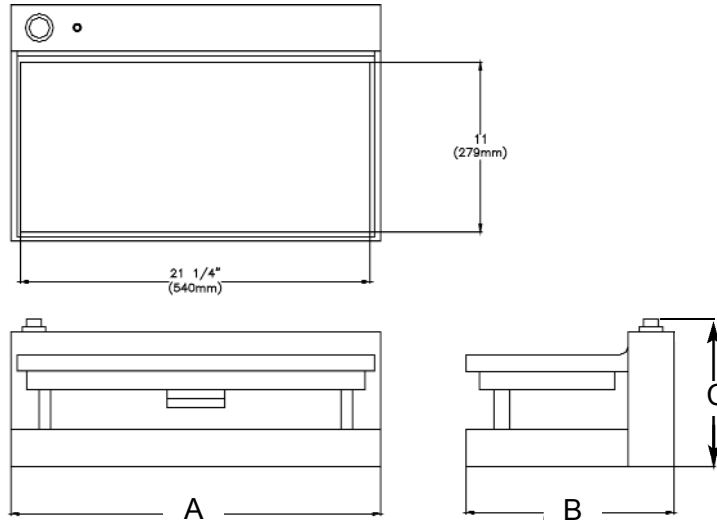
Portable grill is covered by Star's one year parts and labor warranty.





# PORTABLE GRIDDLE

## Model BG3



### Model Specifications

Model No.	Description	Dimensions			Voltage	Wattage	Amps	NEMA#	Approximate Weight	
		(A) Width Inches (cm)	(B) Depth Inches (cm)	(C) Height Inches (cm)					Shipping lbs. (kg)	Installed lbs. (kg)
BG3	Portable Griddle	24	13-1/2	8-3/4	120	1750	14.6	5-15P	50	41
		(61)	(34.3)	(22.2)	120	1750	14.6	5-20P*		
					208	1314	6.3	6-15P	(22.7)	(18.6)
					240	1750	7.3	6-15P		

\*Canadian Requirements

### Typical Specifications

Griddle has a 3/8" thick cast aluminum grilling plate with grease trough and is supplied with a stainless steel grease drawer. Unit is equipped with metal sheathed tubular elements with a total wattage 1750 watts. An adjustable thermostat control with a positive off position and an indicator light is provided. The housing is constructed of stainless steel. Unit is supplied with a 6 foot lead-in cord with NEMA plug. Unit is listed by UL, CUL, and NSF. Printed in the U.S.A.

Due to periodic changes in designs, methods, procedures, policies and regulations, the specifications contained in this sheet are subject to change without notice. While Star Manufacturing exercises good faith efforts to provide information that is accurate, we are not responsible for errors or omissions in information provided or conclusions reached as a result of using the specifications. By using the information provided, the user assumes all risks in connection with such use.

Star Manufacturing International Inc. - 10 Sunnen Drive - P.O. Box 430129 - St. Louis, MO 63143-3800

Phone: (800) 264-7827 - FAX: (800) 264-6666 - www.star-mfg.com