



T&S BRASS AND BRONZE WORKS, INC.
 2 Saddleback Cove / P.O. Box 1088
 Travelers Rest, SC 29690

Model No.
B-2490-PA

Item No.

Travelers Rest, SC: 800-476-4103 • Simi Valley, CA: 800-423-0150 • Fax: 864-834-3518 • www.tsbrass.com



ADA Compliant

This Space for Architect/Engineer Approval

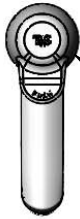
Job Name _____ Date _____

Model Specified _____ Quantity _____

Customer/Wholesaler _____

Contractor _____

Architect/Engineer _____



Pivot Action Metering Cartridge
 w/ Blank Pivot Action Handle

Vandal Resistant Screw.
 Loosen Screw (Do Not
 Remove) and Flip Handle
 Up to Access Metering
 Adjustment.
 (Metering Adjustment
 Requires 3/32" Hex Key)



Ø 2 1/4"
 [57mm]
 Base

B-0199-03
 2.2 GPM Aerator

1 5/16"
 [34mm]

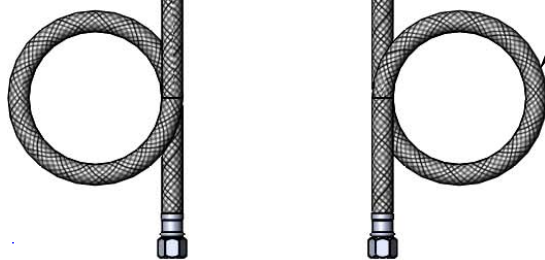
Mounting Surface

4 5/8"
 [118mm]

13/16"
 [21mm]
 Maximum
 Thickness

4 1/16"
 [103mm]

Temperature Mixing Valve
 w/ Integral Check Valves



3/8" Compression Female Inlets
 18" Flexible Stainless Steel
 Supply Hoses

Spanner Bit for
 Access to Metering
 Adjustment Included.
 (Metering Adjustment
 Requires 3/32" Hex Key)



Rough-In Requirement:
 Ø 1 1/8" [29mm] Mounting Hole

Product Specifications:

Single Hole Single Temperature Deck Mount Basin Faucet, Pivot Action
 Metering Cartridge, Blank Pivot Action Handle w/ VR Screw, 2.2 GPM
 Aerator, Temperature Control Mixing Valve w/ Integral Check Valves &
 18" Flexible Stainless Steel Supply Hoses w/ 3/8" Compression Female Inlets

Product Compliance:

ASME A112.18.1 / CSA B125.1
 NSF 61 - Section 9
 NSF 372 (Low Lead Content)
 ANSI A117.1 (ADA)

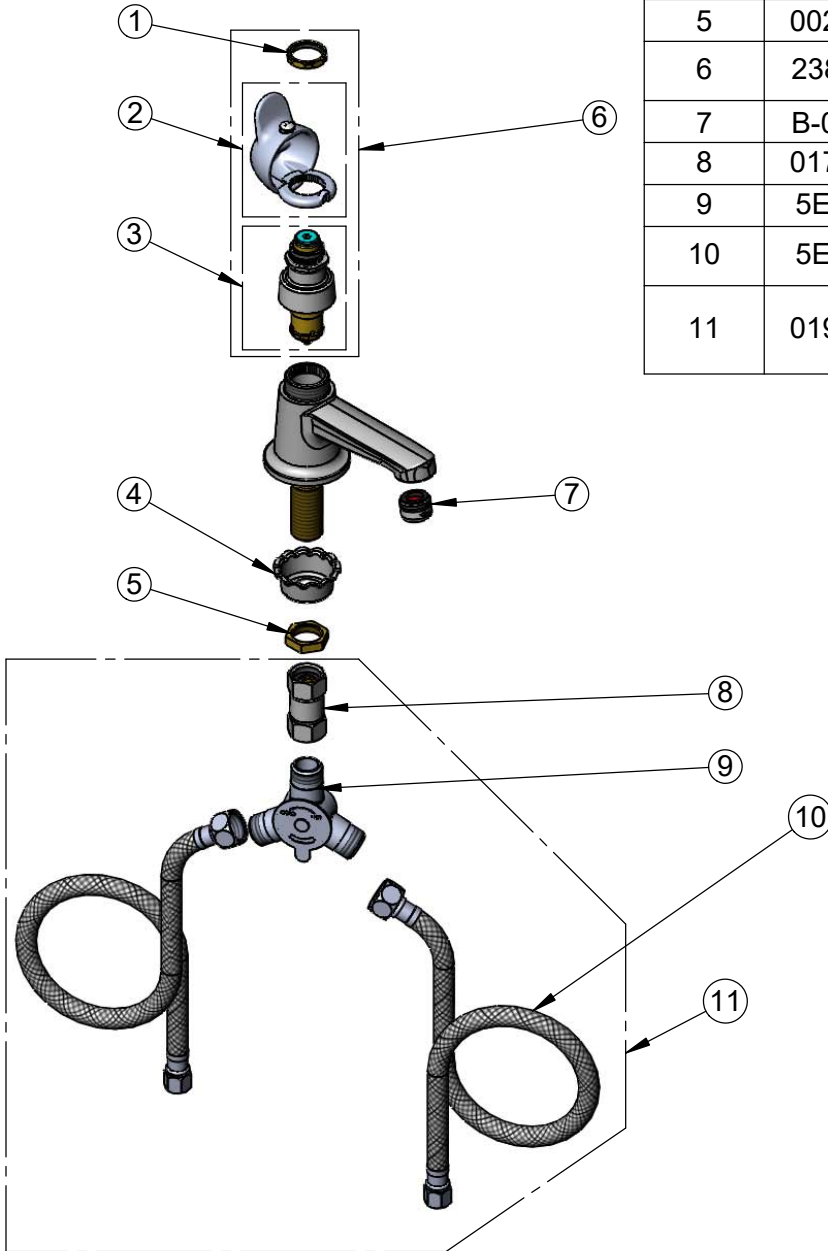


T&S BRASS AND BRONZE WORKS, INC.
 2 Saddleback Cove / P.O. Box 1088
 Travelers Rest, SC 29690

Model No.
B-2490-PA
 Item No.

Travelers Rest, SC: 800-476-4103 • Simi Valley, CA: 800-423-0150 • Fax: 864-834-3518 • www.tsbrass.com

ITEM NO.	SALES NO.	DESCRIPTION
1	PA-N	Retaining Nut
2	PA-B	Blank Pivot Action Handle w/ Retaining Nut and Spanner Bit
3	238A-PA	Pivot Action Metering Cartridge w/ Retaining Nut
4	001000-45	Rosette Washer
5	002954-45	Shank Lock Nut
6	238AB-PA	Pivot Action Metering Cartridge w/ Blank PA Handle & Spanner Bit
7	B-0199-03	2.2 GPM Aerator
8	017506-45	1/2" NPSM Swivel Coupling
9	5EF-0006	Mechanical Mixing Valve
10	5EF-0005	Supply Hose, 9/16-24 Female x 1/2" NPSM
11	019806-40	Temperature Control Mixing Valve w/ Flexible 3/8" Compression Female Inlets



014734-45
#8 Spanner Bit



016654-45
Pivot Action Handle
VR Screw

Product Specifications:
 Single Hole Single Temperature Deck Mount Basin Faucet, Pivot Action
 Metering Cartridge, Blank Pivot Action Handle w/ VR Screw, 2.2 GPM
 Aerator, Temperature Control Mixing Valve w/ Integral Check Valves &
 18" Flexible Stainless Steel Supply Hoses w/ 3/8" Compression Female Inlets

Product Compliance:
 ASME A112.18.1 / CSA B125.1
 NSF 61 - Section 9
 NSF 372 (Low Lead Content)
 ANSI A117.1 (ADA)