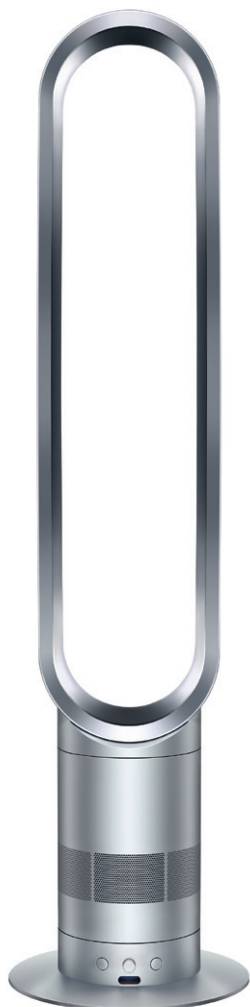


# dyson air multiplier

No blades. No buffeting.

Easy to clean, safe,  
environmental control.



## Understanding personal comfort

An individual's personal comfort is affected by environmental factors such as air temperature, humidity and velocity. In turn this can affect people's work performance, relaxation and health.

In typical interior environments around 40% of occupants could be experiencing low personal comfort. Even in temperature-controlled environments some people will feel "too hot" or "too cold."\*

Air conditioning cannot solve this problem because it's designed to regulate the temperature of open spaces. Adjusting settings may create discomfort for others, and opening windows compromises the effectiveness of air conditioning.

Using the Dyson Air Multiplier™ fan as well as central air conditioning allows individuals to customize their own personal comfort.



\*Hamilton, S.D., et al. 2003. "Using Microenvironments To Provide Individual Comfort" ASHRAE Journal.

## The problem with conventional fans

### Limited settings

They only have three or four settings – and one of those is 'off.' You wish you could adjust it a little, precisely matching the airflow to your needs.

### Awkward to adjust

They are top heavy and awkward to adjust. This can lead to conventional fans pointing in the wrong direction.

### Blades cause buffeting

The blades cause unpleasant buffeting because they chop the air before it hits you.

### Awkward to clean

They are complicated to dismantle and clean, often needing a screwdriver.

### Fast spinning blades

The fast spinning blades have to be guarded by a safety grille.



## Conventional fans



**Fast-spinning blades**  
Conventional fans have fast-spinning blades that have to be guarded by a safety grille.



**Limited settings**  
Conventional fans only have three or four settings and one of those is 'off.'



**Awkward to adjust**  
Conventional fans are top heavy and awkward to adjust.



**Awkward to clean**  
Conventional fans are complicated to dismantle and keep clean.

## The Dyson Air Multiplier™ fan



**Safe**  
The Dyson Air Multiplier™ fan has no blades. It's safe.



**Dimmer-switch**  
The Dyson Air Multiplier™ fan has dimmer-switch control to precisely adjust airflow power.



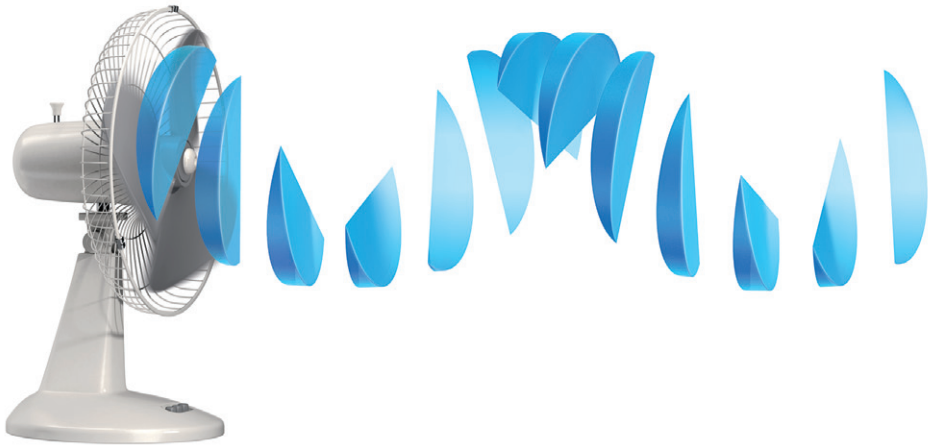
**Touch-tilt**  
The Dyson Air Multiplier™ fan pivots on its own center of gravity, staying put without clamping.



**Easy to clean**  
The Dyson Air Multiplier™ fan is easy to keep clean. Just wipe with a cloth.\*

\*For approved cleaning solutions email [airmultiplier@dyson.com](mailto:airmultiplier@dyson.com)

## The Dyson Air Multiplier™ fan



### **Blades cause buffeting**

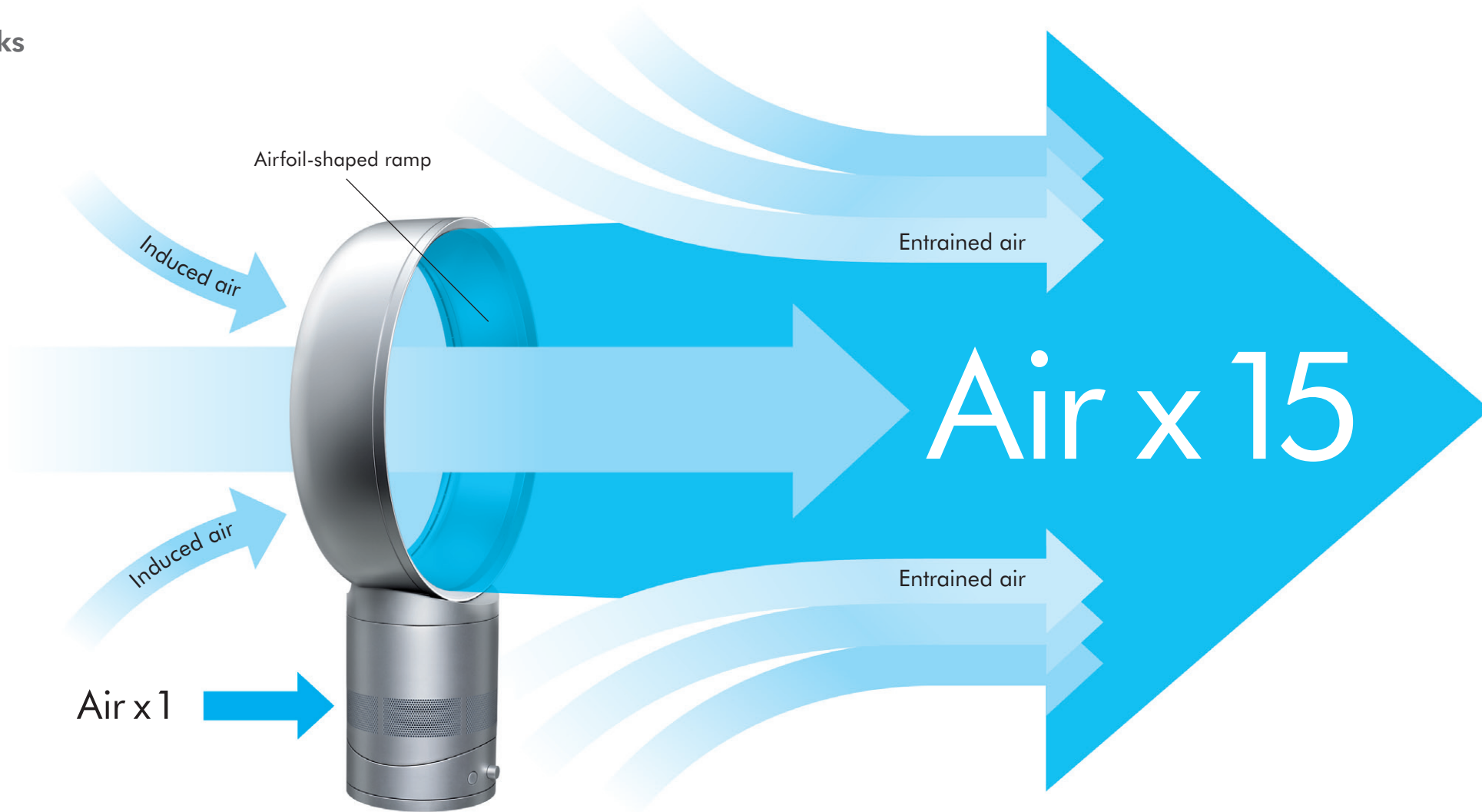
The blades on conventional fans cause unpleasant buffeting because they chop the air before it hits you.



### **No blades. No buffeting.**

Air Multiplier™ technology amplifies surrounding air, giving an uninterrupted stream of smooth air.

## How it works



### **Air Multiplier™ technology**

Air is accelerated through an annular aperture. This creates a jet of air that passes over an airfoil-shaped ramp, channelling its direction. Surrounding air is drawn into the airflow, amplifying it 15 times (this is called inducement and entrainment).

## What people say



**“At Harvard, we are using a number of the Dyson Air Multiplier™ fans to keep students comfortable during lectures where traditional air conditioning is not practical.”**

**Stuart McNeil**  
Building Manager, Physics Department

**Harvard University**

**“We put a Dyson Air Multiplier™ in one of our offices that no one wanted to use because it was stuffy. Now we can’t get people out the office! It gives us the flexibility to adjust the temperature for individual needs and looks amazing, everyone loves it.”**

**Andrew Hartshorn**  
Marketing Director

**PepsiCo**

**“The Dyson Air Multiplier™ is well designed, sleek and quiet while still producing a large amount of clean air.”**

**Nathan M. McCormick**  
LEED AP BD+C

**Harley Ellis Devereaux**

**“Our guests love the flexibility of being able to control their personal comfort when staying with us. The Dyson Air Multiplier™ also suits our modern décor and offers our guests something exciting and different.”**

**Maureen M. Maloney**  
Sales Manager

**Dana Hotel and Spa**

**AM01 table fan**  
For table top personal cooling.



AM01 table fan 10"

AM01 table fan 12"



**Safe**  
No fast-spinning blades.



**Easy to clean**  
No awkward grilles or blades.



**Dimmer-switch control**  
Precisely adjusts airflow power.

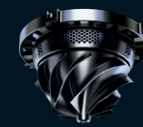
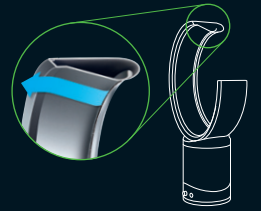


**Touch-tilt**  
Pivots on its own center of gravity, staying put without clamping.

SPECIFICATION	AM01-10"	AM01-10"	AM01-12"
Color	White/silver	Iron/blue	Silver/iron
Weight (lbs)	3.7	3.7	3.8
Motor size (watts)	40	40	40
Inlet air flow (CFM)	57	57	57
Power cord length (feet)	6	6	6
SSP	\$299.99	\$299.99	\$329.99

**Air Multiplier™ technology**  
An annular jet draws in surrounding air, amplifying it 15 times.

**16° airfoil-shaped ramp**  
Generates maximum airflow velocity and volume.



**Mixed flow impeller**  
A combination of the technologies used in turbochargers and jet engines generates powerful airflow.

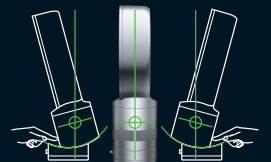
**Safe**  
No fast-spinning blades.

**Easy to clean**  
No awkward grilles or blades.

**1.3mm annular aperture**  
Air is forced out to create the annular jet.

**Brushless motor**  
Energy-efficient. Variable power rather than the limited settings on conventional motors.

**Air inlet**  
Up to 57 cubic feet of air drawn in per minute, generating primary airflow.



**Touch-tilt**  
Pivots on its own center of gravity, staying put without clamping.

**On/off control**  
LED for use in the dark.

**2 year warranty**  
Parts and labor.

**Airflow control**  
Dimmer-switch control. Precisely adjusts airflow power.

**Oscillation control**  
Independent motor drives smooth 90° oscillation.



## AM02 tower fan

A room fan that fits into restricted spaces with a reach of 19 feet.



AM02 tower fan

SPECIFICATION	AM02	AM02
Color	Silver/silver	Iron/blue
Weight (lbs)	7.3	7.3
Motor size (watts)	65	65
Inlet air flow (CFM)	76	76
Power cord length (feet)	6.5	6.5
SSP	\$449.99	\$449.99



**Safe**  
No fast-spinning blades.



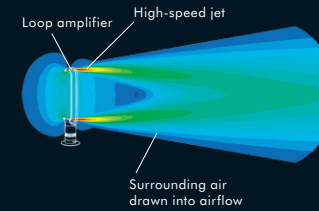
**Easy to clean**  
No awkward grilles or blades.



**Variable airflow control**  
Push button to quickly adjust airflow power.

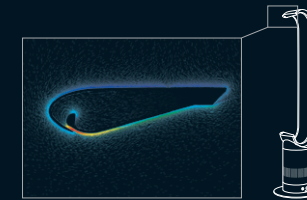
### Air Multiplier™ technology

An annular jet draws in surrounding air, amplifying it 16 times.



### 7° airfoil-shaped ramp

Generates maximum airflow velocity and volume.



### 1mm aperture

Air is forced out to create the jet.

### Mixed flow impeller

A combination of the technologies used in turbochargers and jet engines generates powerful airflow.



### Brushless motor

Energy-efficient. Variable power rather than the limited settings on conventional motors.

### Air inlet

Up to 76 cubic feet of air drawn in per minute, generating primary airflow.

### 2 year warranty

Parts and labor.

### Remote control

#### On/off control

**Variable airflow control**  
Push button to quickly adjust airflow power.

#### Oscillation control

Independent motor drives smooth oscillation.

#### Magnetic location

Curved and magnetized to store neatly on the machine.

### Safe

No fast-spinning blades.

### Easy to clean

No awkward grilles or blades.

### Easy to assemble

No tools required.

### 13mm airflow projector

Directs more air towards you by focusing its exit angle.

### Low center of gravity

Heaviest components positioned low for improved stability.



AM02



## AM03 pedestal fan

The Dyson fan with the highest airflow and velocity providing airflow to large spaces with a reach of 19 feet.



AM03 pedestal fan

SPECIFICATION	AM03
Color	Silver/silver
Weight (lbs)	9.4
Motor size (watts)	65
Inlet air flow (CFM)	70
Power cord length (feet)	6.5
SSP	\$449.99

### Features and benefits



**Safe**  
No fast-spinning blades.



**Easy to clean**  
No awkward grilles or blades.



**Easy height adjust**  
Lift and lower with one hand. No clamping needed.



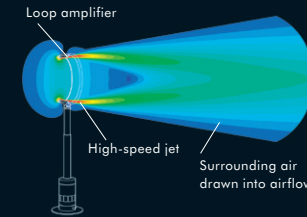
**Easy to tilt**  
Stays put without clamping.



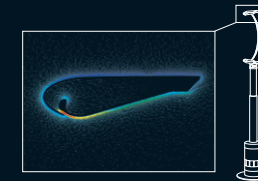
**Variable airflow control**  
Push button to quickly adjust airflow power.

### Air Multiplier™ technology

An annular jet draws in surrounding air, amplifying it 18 times.



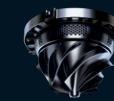
**7° airfoil-shaped ramp**  
Generates maximum airflow velocity and volume.



**1mm annular aperture**  
Air is forced out to create the annular jet.

### Mixed flow impeller

A combination of the technologies used in turbochargers and jet engines generates powerful airflow.



### Brushless motor

Energy-efficient. Variable power rather than the limited settings on conventional motors.

### Air inlet

Up to 70 cubic feet of air drawn in per minute, generating primary airflow.

### 2 year warranty

Parts and labor.

### Remote control

#### On/off control

**Variable airflow control**  
Push button to quickly adjust airflow power.

**Oscillation control**  
Independent motor drives smooth oscillation.

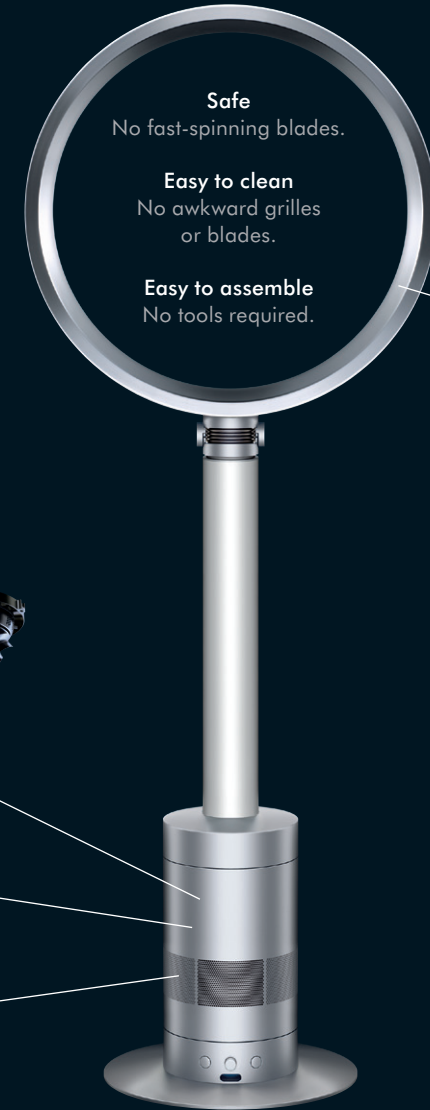
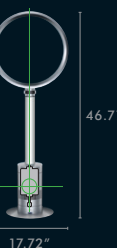
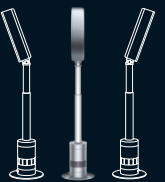
**Magnetic location**  
Curved and magnetized to store neatly on the machine.

**13mm airflow projector**  
Directs more air towards you by focusing its exit angle.

**Easy to tilt**  
Stays put without clamping.

**Easy height adjust**  
The stand uses a constant force tensator spring to resist the force of gravity. So it stays put without clamping.

**Low center of gravity**  
Heaviest components positioned low for improved stability.



# dyson air multiplier

No blades. No buffeting.

For more information or  
to find out how to buy:

Call: 1-888-397-6622

Email: [airmultiplier@dyson.com](mailto:airmultiplier@dyson.com)

Visit: [www.dyson.com/fans](http://www.dyson.com/fans)

**2 year warranty**

