

ModPans™

PRACTICAL FOOD PANS FOR THE MODERN WORLD

BENEFITS



SAVES MONEY

UNLIKE COSTLY DISPOSABLE DELI CONTAINERS, MODPANS CAN BE REUSED TIME-AFTER-TIME, MINIMIZING WASTE AND SAVING MONEY



LABOR SAVINGS

ELIMINATES THE NEED FOR WRAPPING PANS WITH MESSY FILM OR FOIL



SPACE SAVINGS

STACKABLE DESIGN ALLOWS YOU TO GET THE MOST OUT OF YOUR SPACE



FOOD SAFETY

MODPANS WITH LID ASSURE FOOD IS STORED SAFELY, AVOIDING CROSS-CONTAMINATION WHILE PRESERVING FOOD LONGER



Mod Pans were designed to be affordable, space-saving, efficient and usable directly on the line. Prep, measure, store, seal, stack; the patented design combines the durability of a stainless steel food pan, the convenience of a deli tray with added features designed by chefs for chefs.

- Molded-in portion guides that allow for quick, visual measurement and inventory awareness
- Available in 1-quart (.95 L), 2-quart (1.89 L) and 4-quart (3.79 L) sizes
- Designed to CEN Gastronorm Standard EN 631-1 for prep tables
- Durable, stain and odor resistant

 **san jamar**[®]
smart. safe. sanitary.

www.sanjamar.com

Friction fit lid keeps food fresh, eliminating the need for wrapping pans with messy film or foil

Recessed lid allows stacking of containers on top of each other

Quick release tab makes removing lid with little resistance

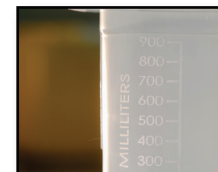
Transparent to see-through for better food rotation



When not in use, **nest together for compact storage**



Dishwasher safe, Microwave Safe and BPA Free



Graduation **measurements are exact** and etched on both sides of containers in standard and metric

Item	Description	Capacity	Item	Retail Pack Description	Capacity
MP19	1 quart food pan with lid	1 quart (.95 L), 1/9 food pan with lid - 5 1/8" (13 cm) deep	MP19RD	(3 each) 1 quart food pan with lid	1 quart (.95 L), 1/9 food pan with lid - 5 1/8" (13 cm) deep
MP16	2 quart food pan with lid	2 quart (1.9 L), 1/6 food pan with lid - 4 1/8" (10.5 cm) deep	MP16RD	(3 each) 2 quart food pan with lid	2 quart (1.9 L), 1/6 food pan with lid - 4 1/8" (10.5 cm) deep
MP13	4 quart food pan with lid	4 quart (3.8 L), 1/3 food pan with lid - 5 1/2" (14 cm) deep	MP13RD	(2 each) 4 quart food pan with lid	4 quart (3.8 L), 1/3 food pan with lid - 5 1/2" (14 cm) deep

San Jamar
555 Koopman Lane
Elkhorn, Wisconsin 53121
USA
T: +1.262.723.6133
F: +1.262.723.4204
info@sanjamar.com
www.sanjamar.com

San Jamar Canada
3300 Bloor Street West
Center Tower, 11th Floor
Suite 3140 Toronto, ON
M8X 2X3
CANADA
T: +1.416.760.7367
F: +1.416.207.2071
canada@sanjamar.com

San Jamar Europe
Schoorstraat 26a, bus 1
2220 Heist op-den Berg
BELGIUM
T: +32 1522 8140
F: +32 1522 8148
emea@sanjamar.com

San Jamar México
Av. Universidad #1377-701
Colonia Axotla CP 01030
Del. Alvaro Obregón
MEXICO, D.F.
T: +52 (55) 3626 0772
F: +52 (55) 5273 4495
mexico@sanjamar.com

