

Job: _____

Item: _____

Quantity: _____

“Quick Change” Cantilever Shelving



Change Your Shelving As Quickly As You Change Your Mind!



H.D. Bar Shelf • 900# Wt. Capacity



T-Bar Shelf • 900# Wt. Capacity



Solid Brute Shelf • 700# Wt. Capacity

- Freestanding aluminum cantilever shelving for walk-in coolers eliminates the need for shelving replacements due to rusting.
- The freestanding uprights have locking tabs spaced on 12” centers and an extended leg with adjustable foot.
- The units are easily adjustable and with no front post, provide 30% more storage space per shelf
- Units available in 18” and 24” deep shelves in multiple lengths.
- Shelving runs can be created using common (center) uprights as shown.
- Five-Year Guarantee against material defects and workmanship.
- Lifetime Guarantee against rust and corrosion.

This information is for general sales and engineering use only. New Age Industrial reserves the right to modify or make changes at any time without notice to materials and specifications.

Made in the USA

Distributed by:

Job: _____

Item: _____

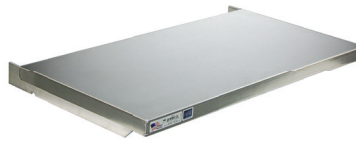
Quantity: _____

“Quick Change” Cantilever Shelving



The above free-standing unit consists of the following:

- | | |
|----------------------|---|
| 1. H.D. Shelf (2) | 5. Common Upright (1) |
| 2. T-Bar Shelf (2) | 6. Left Upright (1) |
| 3. Solid Shelf (2) | 7. Horizontal Brace (2 pair) |
| 4. Right Upright (1) | Note: One pair required per shelving section. |



Model No.	Size D-L	Weight Capacity	Ship Lbs.
H.D. Bar Shelf			
2501	18" x 36"	900 lbs.	6.5
2502	18" x 42"	900 lbs.	8.5
2503	18" x 48"	900 lbs.	9
2505	18" x 60"	900 lbs.	11.2
2511	24" x 36"	900 lbs.	8.3
2512	24" x 42"	900 lbs.	8.7
2513	24" x 48"	900 lbs.	9.2
2515	24" x 60"	900 lbs.	11

Full radius front edge.

Model No.	Size D-L	Weight Capacity	Ship Lbs.
T-Bar Shelf			
2521	18" x 36"	900 lbs.	9.5
2522	18" x 42"	900 lbs.	10.5
2523	18" x 48"	900 lbs.	11.8
2525	18" x 60"	900 lbs.	14.6
2531	24" x 36"	900 lbs.	11
2532	24" x 42"	900 lbs.	13.5
2533	24" x 48"	900 lbs.	14.5
2535	24" x 60"	900 lbs.	17

Ideal for smaller product as well as heavier loads.

Model No.	Size D-L	Weight Capacity	Ship Lbs.
Solid Reinforced Shelf			
2541	18" x 36"	700 lbs.	9.5
2542	18" x 42"	700 lbs.	10.5
2543	18" x 48"	700 lbs.	12
2545	18" x 60"	700 lbs.	14.6
2551	24" x 36"	700 lbs.	11
2552	24" x 42"	700 lbs.	12
2553	24" x 48"	700 lbs.	13
2555	24" x 60"	700 lbs.	19

For smaller products and spill control.

Ordering Instructions

- Determine the number of shelving sections in the shelving run – Find type, number, and depth of shelves required per section. 1, 2, 3
- Add a pair of horizontal braces per shelving section. 7
- Shelving sections 3', 4', and 5' long require two uprights, one left and one right. 4, 6
- Run lengths over 5' require a left and right upright on the ends and a common upright between each section. (as shown in the picture above). 4, 5, 6

Note

- Shelving runs are described in one foot increments. The actual length of a run is an additional 2¾", i.e. a typical 7' run is actually 7' 2¾" (86¾") long.

Model No.	Item Description	Ship Lbs.
HORIZONTAL BRACE — Free-Standing Units Only		
2581	36" Horizontal Brace (2)	3.9
2582	42" Horizontal Brace (2)	4.8
2583	48" Horizontal Brace (2)	5.8
2585	60" Horizontal Brace (2)	6.7
FREE-STANDING UPRIGHTS — 72" in Height		
2561	21" Left Upright • 18" Shelves	12.5
2563	21" Right Upright • 18" Shelves	12.5
2565	21" Common Upright • 18" Shelves	14
2571	27" Left Upright • 24" Shelves	13.5
2573	27" Right Upright • 24" Shelves	13.5
2575	27" Common Upright • 24" Shelves	14.5

Uprights have locking tabs spaced on 12" centers and an extended leg with adjustable foot.

This information is for general sales and engineering use only. New Age Industrial reserves the right to modify or make changes at any time without notice to materials and specifications.

Made in the USA

Distributed by:

“Quick Change II” Cantilever Shelving



Change Your Shelving As Quickly As You Change Your Mind!

- Wall/Ceiling mounted aluminum cantilever shelving for walk-in coolers eliminates the need for shelving replacements due to rusting.
- The wall/ceiling mounted uprights have locking tabs spaced on 12” centers.
- The units are easily adjustable and with no front post, allowing easier access and provides more storage space per shelf.
- Units available in 18” and 24” deep shelves in multiple lengths.
- Shelving runs can be created using common (center) uprights as shown.
- Five-Year Guarantee against material defects and workmanship.
- Lifetime Guarantee against rust and corrosion.



H.D. Bar Shelf • 900# Wt. Capacity



T-Bar Shelf • 900# Wt. Capacity



Solid Brute Shelf • 700# Wt. Capacity

This information is for general sales and engineering use only. New Age Industrial reserves the right to modify or make changes at any time without notice to materials and specifications.

Made in the USA

Distributed by:

Job: _____

Item: _____

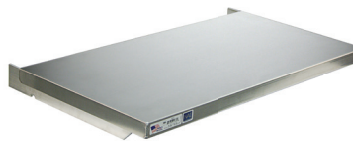
Quantity: _____

“Quick Change II” Cantilever Shelving



The above unit consists of the following:

- | | |
|------------------|-------------------|
| 1. Solid Shelf | 3. Common Upright |
| 2. Right Upright | 4. Left Upright |



Model No.	Size D-L	Weight Capacity	Ship Lbs.
H.D. Bar Shelf			
2501	18" x 36"	900 lbs.	6.5
2502	18" x 42"	900 lbs.	8.5
2503	18" x 48"	900 lbs.	9
2505	18" x 60"	900 lbs.	11.2
2511	24" x 36"	900 lbs.	8.3
2512	24" x 42"	900 lbs.	8.7
2513	24" x 48"	900 lbs.	9.2
2515	24" x 60"	900 lbs.	11

Full radius front edge.

Model No.	Size D-L	Weight Capacity	Ship Lbs.
T-Bar Shelf			
2521	18" x 36"	900 lbs.	9.5
2522	18" x 42"	900 lbs.	10.5
2523	18" x 48"	900 lbs.	11.8
2525	18" x 60"	900 lbs.	14.6
2531	24" x 36"	900 lbs.	11
2532	24" x 42"	900 lbs.	13.5
2533	24" x 48"	900 lbs.	14.5
2535	24" x 60"	900 lbs.	17

Ideal for smaller product as well as heavier loads.

Model No.	Size D-L	Weight Capacity	Ship Lbs.
Solid Reinforced Shelf			
2541	18" x 36"	700 lbs.	9.5
2542	18" x 42"	700 lbs.	10.5
2543	18" x 48"	700 lbs.	12
2545	18" x 60"	700 lbs.	14.6
2551	24" x 36"	700 lbs.	11
2552	24" x 42"	700 lbs.	12
2553	24" x 48"	700 lbs.	13
2555	24" x 60"	700 lbs.	19

For smaller products and spill control.

Model No.	Item Description	Ship Lbs.
Wall & Ceiling Mounted Uprights		
95403	72" Left Upright	9
95404	72" Right Upright	9
95405	72" Common Upright	10.5
97753	84" Left Upright 11	10.5
97755	84" Right Upright	10.5
97754	84" Common Upright	11.4
95631	96" Left Upright 13	12.5
95632	96" Right Upright	12.5
95633	96" Common Upright	13
96617	108" Left Upright	14.5
96618	108" Right Upright	14.5
96619	108" Common Upright	15

Uprights have locking tabs spaced on 12" centers.

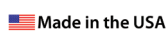
Ordering Instructions

- Determine the number of shelving sections in the shelving run – Find type, number, and depth of shelves required per section.
- Horizontal braces are not needed.
- Shelving sections 3', 4', and 5' long require two uprights, one left and one right.
- Run lengths over 5' require a left and right uprights on the ends and a common upright between each section. (as shown in the picture above).

Note

- Upright height (length) is determined by ceiling height.
- Actual shelf depth from the wall to the front of the shelf is 3" more than the listed shelf depth.
- The actual shelving run length is found by adding 6-1/2" to the sum of the shelf lengths in a shelving run; A typical 7' shelving run which uses a 36" shelf length and a 48" shelf length is actually 90-1/2" long (7' 6-1/2").

This information is for general sales and engineering use only. New Age Industrial reserves the right to modify or make changes at any time without notice to materials and specifications.



Distributed by: