

Job: _____

Item: _____

Quantity: _____

99551 - Aluminum Security Cage

- Provides safe, lockable security of valuable and/or dangerous materials.
 - Ideal "emergency box" for schools
 - Use for chemical storage
- Equipped with double doors with a stainless steel hasp and replaceable stainless steel hinges.
- All welded aluminum construction.
- **Lifetime Guarantee against rust and corrosion.**



Adjustable, reinforced shelves.



Stainless Steel Hasp.



This information is for general sales and engineering use only. New Age Industrial reserves the right to modify or make changes at any time without notice to materials and specifications.



Distributed by:

Job: _____

Item: _____

Quantity: _____

99551 - Aluminum Security Cage

Specifications

Material:

- Hi-tensile, corrosion-resistant, rust-proof, primary extruded aluminum, Type 6463-T5 alloy and 5052 H32-34 sheet aluminum.

Construction:

- All heli-arc welded.

Shelves:

- Unit equipped with three solid shelves that are constructed out of .080" aluminum sheet, adjustable on 2" centers.

Base:

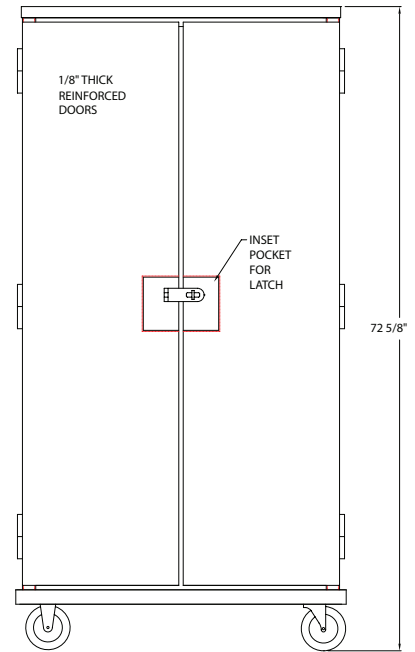
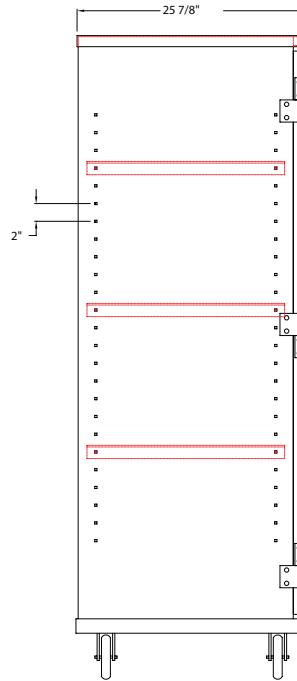
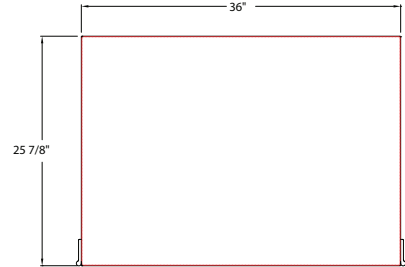
- 1/8" Sheet base, reinforced with 1 1/4" x 1 1/2" x .070" wall tube; 4" x 4 1/2" x 3/8" thick pre-tapped caster plates are welded to the base.

Doors & Sides:

- Constructed of 1/8" Sheet, Door is reinforced with tube and have lockable latch to increase security.

Casters:

- Four 5" diameter casters, 2" wide with polyurethane tire; two swivel and two rigid.



Model No.	Size W-H-D	Interior Shelves	Shelf Size	Clear Space	Shipt Lbs.
Solid Security Cage With Adjustable Shelves					
99551	37 1/4" x 72 3/4" x 26"	3	22 1/2" x 35"	Adj.	175
Equipped with four, 5" plate type casters (#C450).					

Options:

Tamper Resistant Screws -- Add "PP" suffix to model #.

This information is for general sales and engineering use only. New Age Industrial reserves the right to modify or make changes at any time without notice to materials and specifications.



Distributed by: