



# BEVERAGE-AIR

Project: \_\_\_\_\_

AIA#

Item: \_\_\_\_\_

Location: \_\_\_\_\_

SIS#

Approved: \_\_\_\_\_

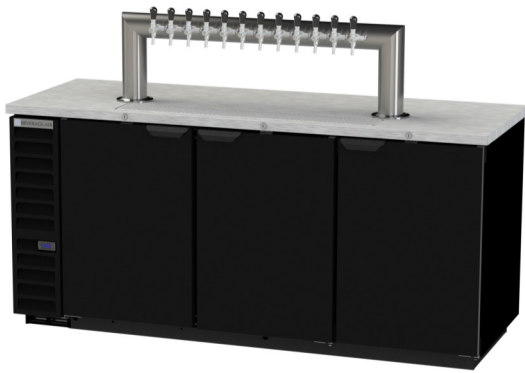
## DD STANDARD DIRECT DRAWS

DD78HC Solid Door Twelve Tap Tower  
Hydrocarbon Series

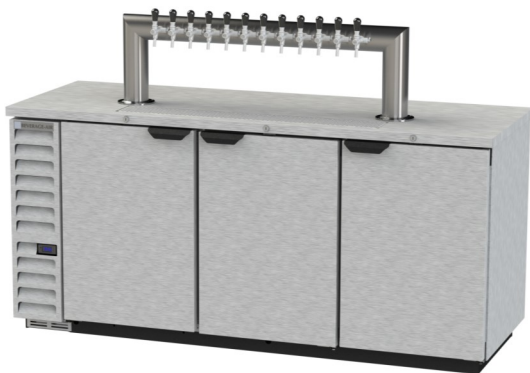
### MODELS:

DD78HC-1-B-12T

DD78HC-1-S-12T



DD78-1-B-12T



DD78-1-S-12T

**3 Year Parts/Labor Warranty**  
**Additional 2 Year Compressor Warranty**

### CABINET CONSTRUCTION

- Exterior black or stainless steel front and door, gray painted sides
- Top is made from heavy-duty stainless steel including drip tray
- Interior is galvanized steel on walls and ceiling reinforced floor is heavy duty stainless steel
- Full electronic control
- Twelve tap tower
- 3-in-1 Draft Solution uses a single stainless-steel tap to serve different beverages, such as wine, beer, and coffee (or other non-alcoholic beverages) through silver-lined, anti-microbial tubing that is 100% effective against the top 4 beverage spoiling bacteria
- 3" Stainless steel insulated dispensing tower
- Drain tube located at bottom front of cooler for connection to floor drain
- Self-closing doors with locks
- Magnetic gaskets provide positive door seal
- Compressor available on left or right, specify at time of unit order
- Maintains product temperatures between 36°F and 38°F

### OPTIONS & ACCESSORIES

- Wine models
- Faucet locks
- Glass rinser
- 3"-6" casters or 6" black legs
- Remote option

### REFRIGERATION SYSTEM

- Refrigeration system uses R290 refrigerant to comply with all environmental concerns
- Automatic, non-electric defrost
- Epoxy coated evaporator coil

DD78HC Direct Draw Dispenser: 12 Tap Tower Model



3779 Champion Blvd., Winston-Salem, NC 27105  
1-888-845-9800 Fax: 1-336-245-6453  
Beverage-Air.com sales@bevair.com



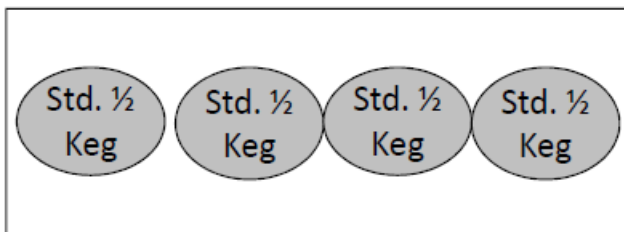
# BEVERAGE-AIR

## Bar Equipment-Direct Draw Dispenser Solid Door 12 Tap Tower

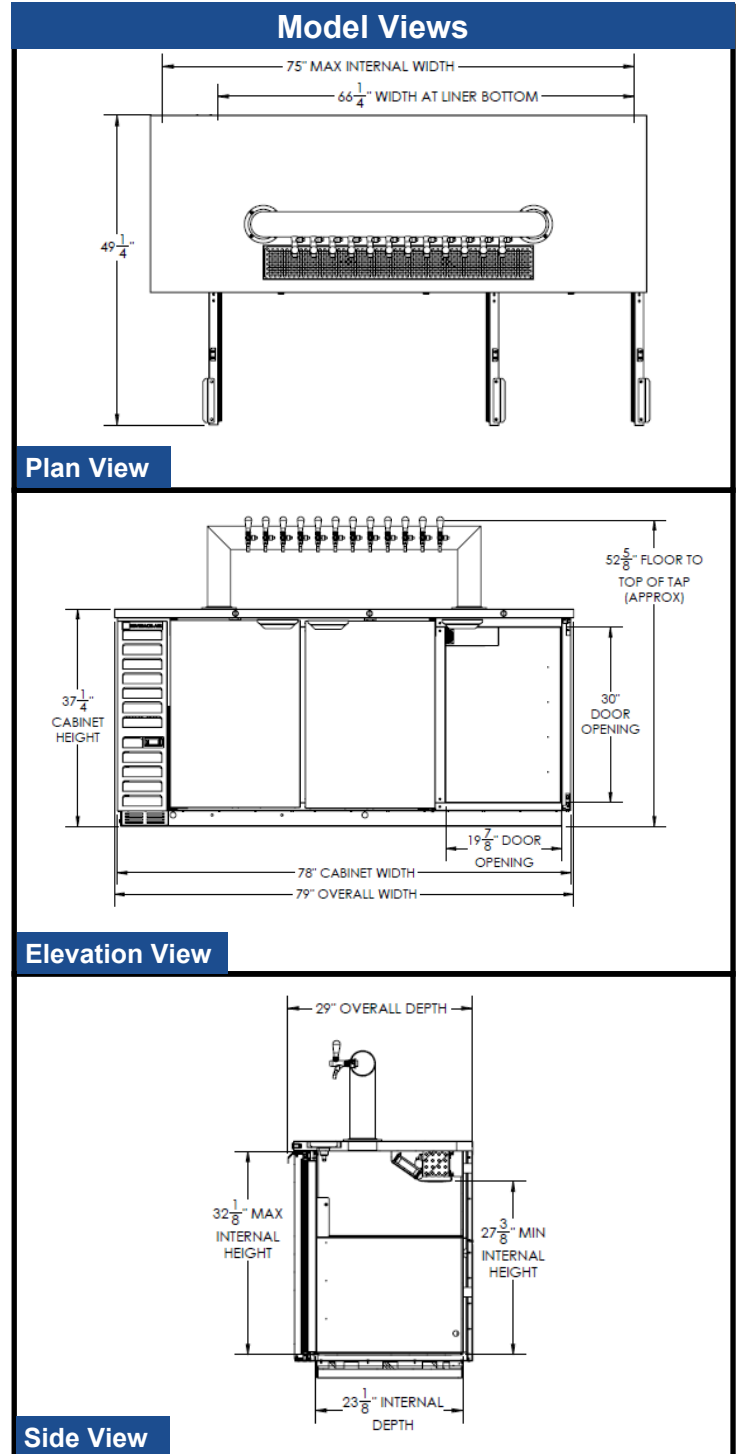
Models: DD78HC-1-B-12T, DD78HC-1-S-12T

| MODEL                            | DD78HC-1-B-12T | DD78HC-1-S-12T |
|----------------------------------|----------------|----------------|
| <b>EXTERNAL DIMENSIONAL DATA</b> |                |                |
| Width Overall                    | 79"            | 79"            |
| Depth Overall with Handle        | 29"            | 29"            |
| Height Overall                   | 52 5/8"        | 52 5/8"        |
| Number of Doors                  | 3              | 3              |
| Depth with Door Open 90°         | 49 1/4"        | 49 1/4"        |
| Door Opening (in)                | 19 7/8" x 30"  | 19 7/8" x 30"  |
| <b>INTERNAL DIMENSIONAL DATA</b> |                |                |
| NET Capacity (cubic ft.)         | 33.59          | 33.59          |
| Internal Width Overall (in)      | 66 1/4"        | 66 1/4"        |
| Internal Depth Overall (in)      | 23 1/8"        | 23 1/8"        |
| Internal Height Overall (in)     | 27 3/8"        | 27 3/8"        |
| Number of 1/2 Kegs               | 4              | 4              |
| <b>ELECTRICAL DATA</b>           |                |                |
| Full Load Amperes 115/60/1       | 5.5            | 5.5            |
| <b>REFRIGERATION DATA</b>        |                |                |
| Horsepower                       | 1/3            | 1/3            |
| Capacity (BTU/Hr)*               | 2392           | 2392           |
| <b>WEIGHT DATA</b>               |                |                |
| Gross Weight (Crated lbs)        | 478 lbs        | 478 lbs        |
| Height - Crated                  | 45"            | 45"            |
| Width - Crated                   | 81"            | 81"            |
| Depth - Crated                   | 31"            | 31"            |

### DD78 KEG CAPACITY



4 Std. 1/2 Keg



### ELECTRICAL CONNECTION



115/60/1  
NEMA-5-15P

Units pre-wired at factory and include 8' long cord and plug set.



an Ali Group Company



The Spirit of Excellence

3779 Champion Blvd., Winston-Salem, NC 27105  
1-888-845-9800 Fax: 1-336-245-6453  
Beverage-Air.com sales@bevair.com