



BEVERAGE-AIR

Project: _____

AIA#

Item: _____

Location: _____

SIS#

Approved: _____

LUMAVUE™ MERCHANDISERS

LV49HC Black Hinged Door Model
Hydrocarbon Series

**MODELS:
LV49HC-1-B**



LV49HC-1-B

**3 Year Parts/Labor Warranty
Additional 2 Year Compressor Warranty**

CABINET CONSTRUCTION

- Standard cabinet exterior finish is heavy duty steel with a black baked on durable coating
- Heavy duty interior construction includes white coated steel walls
- Full electronic control
- Modern one piece grille
- Double pane lowE argon filled glass doors feature inside and outside panes that are tempered for added safety
- Self-closing hinged glass door features recessed, pocked door handle
- Door provides automatic hold open feature
- Five (5) epoxy coated shelves per section standard
- LED lighting
- Whisper quiet refrigeration system
- Maintains product temperatures between 32°-40°F
- Field reversible doors

OPTIONS & ACCESSORIES

- Stainless steel or white exterior
- Stainless steel or black interior
- Door locks
- Wine rack
- Wine temperature model available
- Extra shelves
- 3" and 6" casters or 6" legs
- Remote
- Gravity flo kits
- Custom graphic and signage

REFRIGERATION SYSTEM

- Refrigeration system uses R290 refrigerant to comply with all environmental concerns
- Automatic, non-electric evaporator
- Epoxy coated evaporator coil

LV49HC Lumavue™ Merchandiser: Hinged Door Models



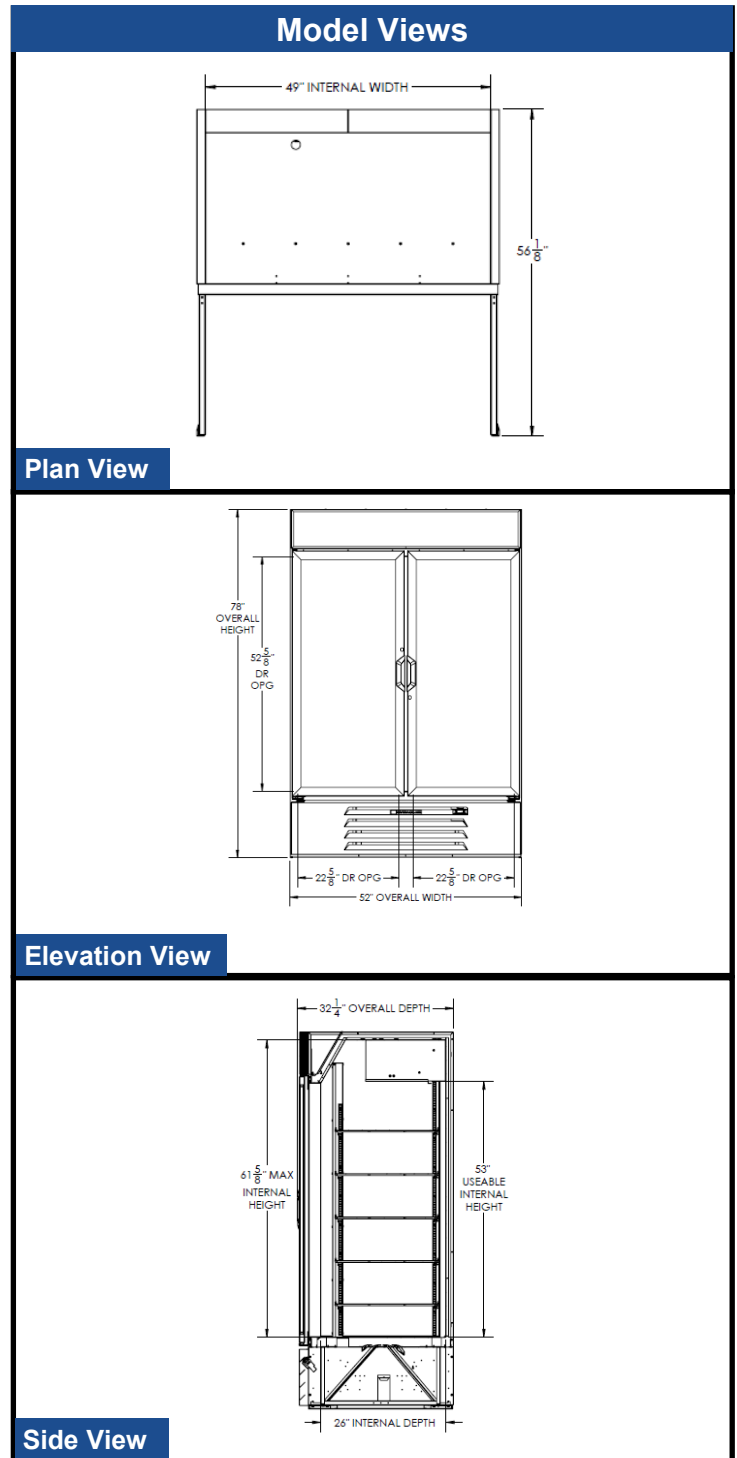
3779 Champion Blvd., Winston-Salem, NC 27105
1-888-845-9800 Fax: 1-336-245-6453
Beverage-Air.com sales@bevair.com



BEVERAGE-AIR

Glass Door Merchandisers - Hinged Door Models Models: LV49HC-1-B

MODEL	LV49HC-1-B
EXTERNAL DIMENSIONAL DATA	
Width Overall	52"
Depth Overall	32 1/4"
Height Overall	78"
Number of Doors	2
Depth with Door Open 90°	56 1/8"
Door Opening (in)	22 5/8" x 52 5/8"
Shelf Area	499 7/8
INTERNAL DIMENSIONAL DATA	
NET Capacity (cubic ft.)	46.15
Internal Width Overall (in)	49"
Internal Depth Overall (in)	26"
Internal Height Overall (in)	61 5/8"
Internal Height Useable (in)	53"
Number of Shelves	10
ELECTRICAL DATA	
Full Load Amperes 115/60/1	5
REFRIGERATION DATA	
Horsepower	1/3
Capacity (BTU/Hr)*	2392
WEIGHT DATA	
Gross Weight (Crated lbs)	570 lbs
Height - Crated	85"
Width - Crated	54"
Depth - Crated	36"



ELECTRICAL CONNECTION



115/60/1
NEMA-5-15P

Units pre-wired at factory and include 8' long cord and plug set.



an Ali Group Company



The Spirit of Excellence

3779 Champion Blvd., Winston-Salem, NC 27105
1-888-845-9800 Fax: 1-336-245-6453
Beverage-Air.com sales@bevair.com