



BEVERAGE-AIR

3779 Champion Blvd., Winston-Salem, NC 27105
1-888-845-9800 Fax# 1-336-245-6453
<http://www.Beverage-Air.com>

CUSTOMER'S CHOICE FOR A HOT LOCATION
Tested & Certified to Ambient Class of 100°F

3 Year Parts/Labor Warranty
Additional 2 Year Compressor Warranty

LUMAVUE SERIES—GLASS DOOR MERCHANDISER

Used for merchandising and storage of product.

CABINET CONSTRUCTION

Heavy duty construction includes white coated steel interior walls. Exterior finish is heavy-duty steel with a baked on durable coating. Choose from black or white finish.

Foamed-in-place CFC and HCFC-free polyurethane insulation enhances the structural strength of the cabinet and helps increase energy efficiency.

Modern, one-piece grille is easily removed for cleaning/servicing.

Double pane, lowE argon filled glass doors feature inside and outside panes that are tempered for added safety.

Self-closing, hinged glass doors feature recessed, pocket door handles that provide low profile and are more aesthetically pleasing. Doors provide automatic hold-open feature. Center and right doors are right-hand hinged. Left door is left-hand hinged.

Five white epoxy coated steel shelves per door are standard.

Brightly lighted sign panel.

REFRIGERATION

Whisper-quiet refrigeration system uses R134a refrigerant, which is CFC and HCFC-free for compliance with environmental safety concerns.

Product temperatures from 32°F to 40°F.

ELECTRICAL

Interior fluorescent lighting enhances product illumination. Optional LED lighting provides hidden light source for increased product visibility. LED bulbs last up to 10 times longer compared to fluorescent bulbs and renders additional energy savings due to reduced wattage load on compressor.

Units wired at factory and ready for connection to a 115/60/1 phase, 15 amp dedicated outlet. 8' long cord and plug set included.

Item No. _____
Quantity _____

HINGED GLASS DOOR
LUMAVUE™
MERCHANDISER SERIES
LV72Y

MODEL:
LV72Y-1-B
LV72Y-1-W
LV72Y-1-B-LED
LV72Y-1-W-LED



LV72Y-1-B (shown with 4 shelves per section)

SPECIAL FEATURES

- LV72Y has earned the ENERGY STAR®
- Whisper-quiet refrigeration system
- Hinged glass doors
- Recessed, pocket door handles
- Brightly lighted sign panel
- Optional LED lighting
- 2010 Federal Energy Compliant
- Gravity Flo kits and Can Roller options available

ELECTRICAL CONNECTION



115/60/1
NEMA-5-15P

Units pre-wired at factory and include 8' long cord and plug set.

Available From:



*Note: Not all mark-

ings may apply to all

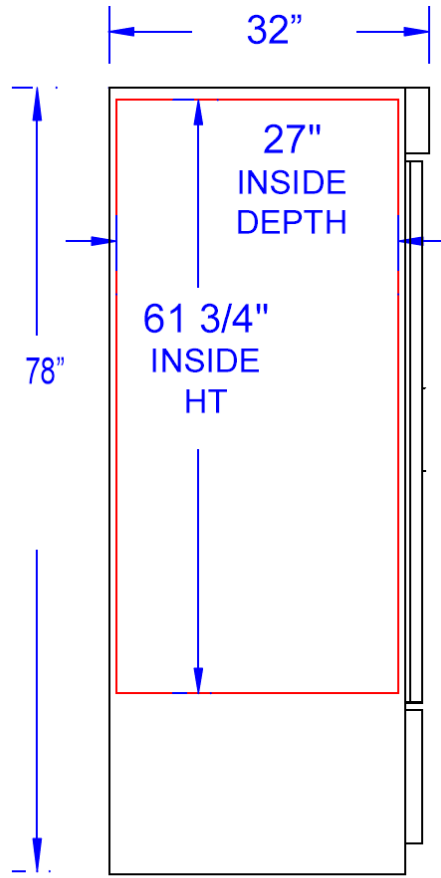
Model Specified _____	Store# _____
Location _____	Quantity _____



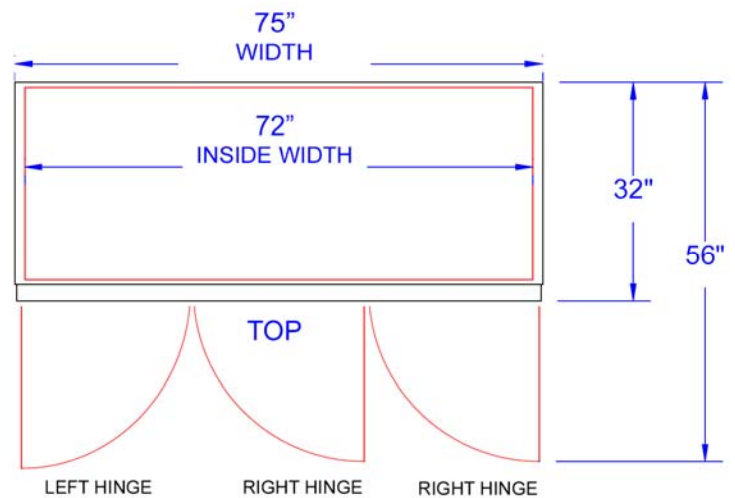
LumaVue Glass Door Merchandisers
Model: LV72Y

MODEL	LV72Y
EXTERNAL DIMENSIONAL DATA	
Length Overall (inches)	75"
Length Overall (mm)	1905
Depth Overall (inches)	32"
Depth Overall (mm)	813
Height Overall— (inches)	78"
Height Overall— (mm)	1981
Number of doors	3
Depth with Door Open 90 °	56"
INTERNAL DIMENSIONAL DATA	
NET Capacity (cubic ft.)	72
NET Capacity (Liters)	2039
Internal Length Overall (inches)	72"
Internal Length Overall (mm)	1905
Internal Depth Overall (inches)	29 1/4"
Internal Depth Overall (mm)	743
Internal Height Overall—(inches)	61 3/4"
Internal Height Overall—(mm)	1569
*Internal Height to Evaporator Housing—(inches)	54"
*Internal Height to Evaporator Housing—(mm)	1372
Number of shelves	15
ELECTRICAL DATA	
Full Load Amperes 115/60/1	9.9 A
ENERGY CONSUMPTION	
	7.68 kWh/Day
REFRIGERATION DATA	
Horsepower	1/2
WEIGHT DATA	
Gross Weight (Crated lbs)	716
Gross Weight (Crated kg)	325

PLAN VIEWS



END



Note: Not all markings may apply to all model variations.
 *Internal height to evaporator housing.

BEVERAGE-AIR® CORPORATION

3779 Champion Blvd. • Winston-Salem, NC 27105 USA • (336) 245-6400 • Fax (336) 245-6453 • (888) 845-9800 • www.beverage-air.com

Specifications are subject to change without prior notice. 10/14