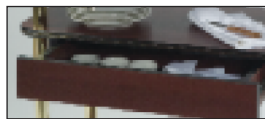




#37307 **L**  
in red maple laminate



Cutouts hold an ice filled, half-size steam table pan or insulated



A handy drawer under the middle shelf provides concealed space for utensils, salad set



#36306 **L**  
in red mahogany laminate

Video

**Laminate Carts & Dessert/Pastry Carts**  
genevadesignsllc.com/  
laminat carts



STANDARD FEATURES	MODEL	DESCRIPTION	FINISH	OVERALL SIZE W X L X H	LOWER SHELVES W X L	SHELF CLEARANCE	SHIP WT.
<ul style="list-style-type: none"> <li>Laminated wood shelves</li> <li>Choice of 10 standard laminate finishes in popular woodgrains and textures</li> <li>High impact edge molding</li> <li>1 1/2" dia. brass or epoxy powder coated steel legs</li> <li>No mark, 4" swivel casters</li> <li>Freight Class: 125</li> </ul>	36306	rounded oval top, shelves, cut-out top display, acrylic roll top dome with metal knob, cut-out holds full size food pan or drop-in eutectic bin (not included)	laminate, 10 options	23" x 44" x 44 1/4"	19" x 42"	under dome: 8 1/2" top-mid: 12" mid-bottom: 16"	106
	37307	rounded oval top, rectangular shelves, 12" dia. cut-out holds 17" salad bowl (not included), rectangular cut-out holds one 1/2 size pan or drop-in eutectic bin (not included), 20"W x 12" D x 3" H drawer under shelf	laminate, 10 options	23" x 44" x 35"	15 3/4" x 32"	top drawer-mid: 12" mid drawer-bottom: 12"	129

