

TAMPER RESISTANT COFFEE URNS

Project

Date

Model **67710(E)**

Item#

Quantity



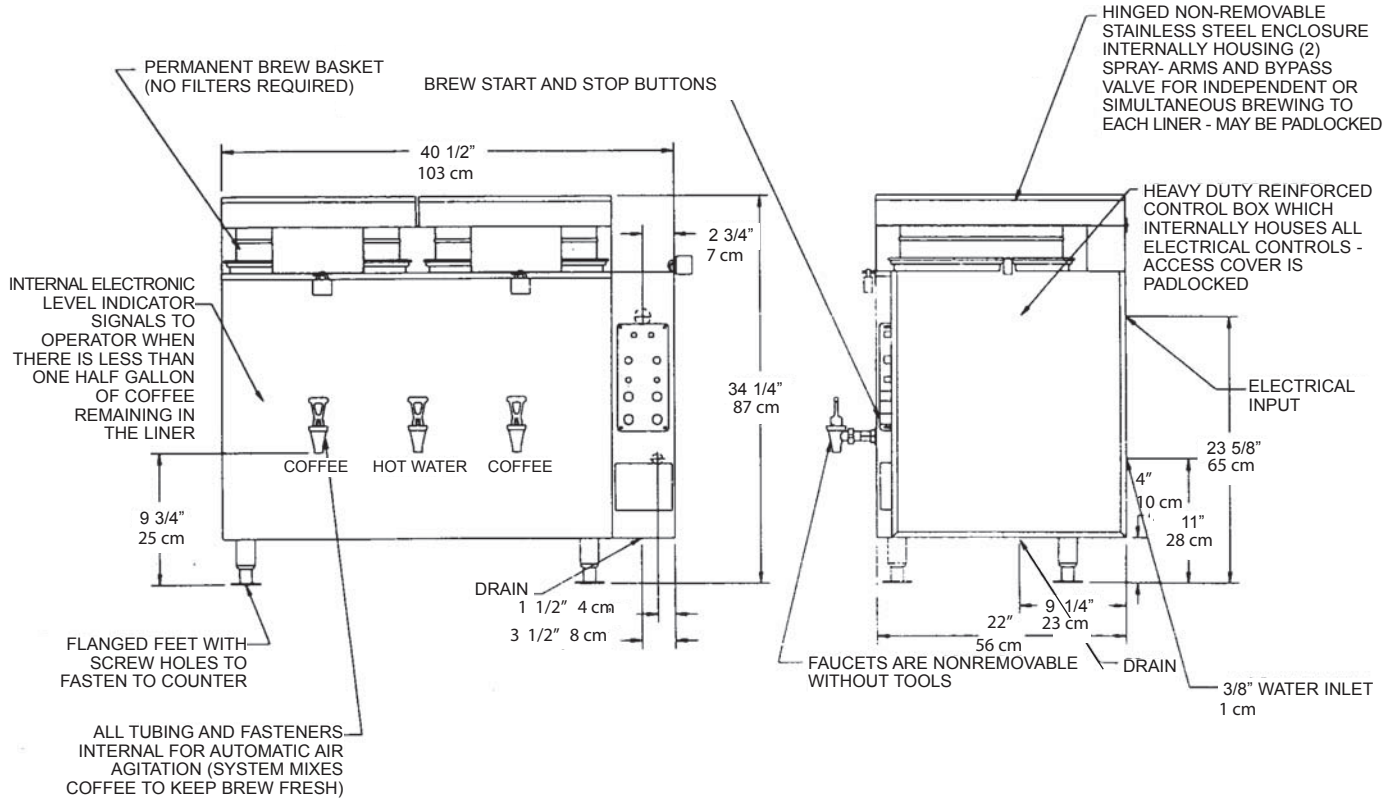
model 67710(E)

Features

- Tamper resistant: all adjustable controls (timer, thermostats, sprayover flow control), are inside a lockable control box. Master on/off switch is behind a stainless steel, lockable panel. Control switches and pilot lights are protected behind a tamper resistant, 1" (2.54 cm) thick Lexan® cover plate. (Padlocks not included.)
- High volume: two independent brewing heads brew into the 10 gallon (37.9 L) liners simultaneously or independently. Brew heads are mounted under hinged lockable covers.
- Innovative indicators eliminate exterior parts. Indicator lights replace gauge glasses. Water hot light replaces thermometer. Completely internal air agitation system for each liner.
- Designed for safety - eliminates potential burn hazard with two layers of high density fiberglass insulated body.
- Urn can be fastened to counter top with flanged feet to prevent tipping or movement.
- Automatic refill and reheat of water compartment as needed.
- Low water cutoff system protects heating elements from burn-out, at start-up or in operation.
- Eliminates need for paper filters - equip with two permanent stainless steel brew baskets.

Models & Dimensions

Tamper Resistant Coffee Urns



model 67710(E) represented

Specifications

Model	Description	Electrical	Ship Dimensions (H x W x D)	Ship Weight
67710(E) (A67710E)	(2) liners, 10 gallons (37.9 L) each.	120/208V / 15 kW / 72A / 1Ph	41" x 57" x 28" (104 cm x 145 cm x 71 cm)	275 lbs. (124.7 kg)

Electrical - Other electrical options available.

