

Camshelving® Basics Series

4-Shelf Stationary Starter Units

1 Post Height

72" (1830 mm)

3 Shelf Depths

18" (460 mm), 21" (540 mm), 24" (610 mm)

4 Shelf Lengths

36" (910 mm), 42" (1070 mm),
48" (1220 mm), 54" (1380 mm), 60" (1530 mm)



Starter Unit Includes:

4 stationary posts with leveling feet installed pre-assembled with post connectors and collar wedges, 4 bags of 8 each stationary traverse dovetails (4 ea. A and B), Vented shelf plates (for 4 shelves), 8 stationary traverses and instructions.

Features & Benefits

Strong Technology

Posts and Traverses are built using advanced manufacturing technology and the use of a non-corrosive composite material. The light-weight, yet extremely durable composite material in Camshelving® Basics Series endures even the toughest environments and supports all food safety, HACCP and sanitation recommendations. Shelves up 48" (1220 mm) long hold up to 600 lbs. (272 kg) evenly distributed static weight. Shelves 54" – 60" (1380 mm – 1530 mm) long hold up to 500 lbs. (227 kg) each. Shelves connected by Corner Connectors hold up to 300 lbs. (136 kg) on a 30" (760 mm) to 48" (1220 mm) traverse.

Smart Design

Similar to other shelving products by Cambro, shelf plates can be easily removed, washed individually or in sections and placed in an open-end Camrack® (OETR314) and washed in a commercial dishwasher.

Uncompromised Reliability

Resistant to scratching, peeling, warping and corrosion every component in Camshelving® Basics was rigorously tested for strength, reliability and performance. Functions in temperatures down to -36°F (-38°C) or warm environments up to 190°F (88°C).

Exceptional Value

Innovative design helps maximize valuable space and provides strength and stability. Straight line components are attached by sharing posts of existing units with no loss of weight-bearing capacity. Camshelving® Basics features a lifetime warranty against rust and corrosion eliminating the need for unnecessary replacement costs.

Requires Minimal Assembly

Can be put together with the use of a rubber mallet. Two-piece dovetails secure Traverses so they can be set easily into place.

Item No. _____

Specifier Identification No. _____

Model No. _____

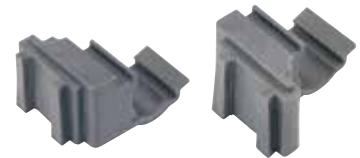
Quantity _____



Four Shelf Unit with Vented Shelf Plates.



Dunnage Stand
Recommended for Units
54" (1380 mm) or longer.



Set of Left and Right Corner Connectors
(1 set required per shelf).

Flexible Design

Shelves can be easily adjusted at 4" (102 mm) increments. Add a shelf to an existing unit by simply ordering the appropriate Shelf Kit. Adjustable foot on bottom of each stationary Post adjusts easily for floor irregularities so shelf contents are securely stored and leveled.

Optional Accessories

Includes Wall Fastener, Seismic Foot and Identification Tag for shelves. Identification Tag clips easily onto traverses.

Approvals



Does not include Wall Fastener, Seismic Foot, Corner Connector and ID Tag.

Camshelving® Basics Series

4-Shelf Stationary Starter Units

1 Post Height

72" (1830 mm)

3 Shelf Depths

18" (460 mm), 21" (540 mm), 24" (610 mm)

4 Shelf Lengths

36" (910 mm), 42" (1070 mm),
48" (1220 mm), 54" (1380 mm), 60" (1530 mm)



Starter Unit Includes:

4 stationary posts with leveling feet installed pre-assembled with post connectors and collar wedges, 4 bags of 8 each stationary traverse dovetails (4 ea. A and B), Vented shelf plates (for 4 shelves), 8 stationary traverses and instructions.

Four Shelf Starter Units 72" (1830 mm) Height

| CODE | TRAVERSE IN. MM | CASE LBS. (CUBE) | CASE KG. (CUBE M ³) |
|---------------------------|--------------------|---------------------|------------------------------------|
| 18" (460 mm) Depth | | | |
| CBU183672V4 | 36" 910 mm | 40.89 (5.92) | 18,55 (0,17) |
| CBU184272V4 | 42" 1070 mm | 44.13 (5.92) | 20,01 (0,17) |
| CBU184872V4 | 48" 1220 mm | 47.65 (5.92) | 21,61 (0,17) |
| CBU185472V4 | 54" 1380 mm | 51.13 (5.92) | 23,19 (0,17) |
| CBU186072V4 | 60" 1530 mm | 54.41 (5.92) | 24,68 (0,17) |
| 21" (540 mm) Depth | | | |
| CBU213672V4 | 36" 910 mm | 44.49 (7.39) | 20,18 (0,21) |
| CBU214272V4 | 42" 1070 mm | 48.21 (7.39) | 21,87 (0,21) |
| CBU214872V4 | 48" 1220 mm | 52.05 (7.39) | 23,61 (0,21) |
| CBU215472V4 | 54" 1380 mm | 56.01 (7.39) | 25,40 (0,21) |
| CBU216072V4 | 60" 1530 mm | 59.61 (7.39) | 27,04 (0,21) |
| 24" (610 mm) Depth | | | |
| CBU243672V4 | 36" 910 mm | 48.45 (8.49) | 21,98 (0,24) |
| CBU244272V4 | 42" 1070 mm | 52.90 (8.49) | 23,99 (0,24) |
| CBU244872V4 | 48" 1220 mm | 56.50 (8.49) | 25,63 (0,24) |
| CBU245472V4 | 54" 1380 mm | 60.85 (8.49) | 27,60 (0,24) |
| CBU246072V4 | 60" 1530 mm | 65.15 (8.49) | 29,55 (0,24) |

Architect Specs

| | |
|-------------------------------|---|
| Posts: | Proprietary non-corrosive composite material. |
| Post Connectors: | Glass Filled Nylon. |
| Traverses: | Proprietary non-corrosive composite material. |
| Vented Shelf Plates: | Polypropylene. |
| Corner Connectors: | Glass Filled Nylon. |
| Adjustable Foot: | Glass Filled Nylon. |
| Seismic Foot: | Stainless steel post and wide foot plate, 3 holes for bolts. (Bolts not provided). |
| Wall Fastener: | Stainless Steel. |
| Dovetails: | Resin Nylon. |
| Post Collar Wedges: | Resin Polypropylene. |
| Dunnage Stand Bracket: | Resin Polypropylene. |

Item No. _____

Specifier Identification No. _____

Model No. _____

Quantity _____

Corner Connector Set

| CODE | DESCRIPTION | CASE LBS. (CUBE) | CASE KG. (CUBE M ³) |
|-------|----------------|---------------------|------------------------------------|
| CBCC1 | Right and Left | 0.36 (0.05) | 0,16 (0,00) |

Case Pack: 1 set

Dunnage Stands

6 1/4" (165 mm) Clearance (from floor to bottom of traverse)

| CODE | DEPTH IN. MM | CASE LBS. (CUBE) | CASE KG. (CUBE M ³) |
|----------|-----------------|---------------------|------------------------------------|
| CBDS18H6 | 18" 460 mm | 1.91 (0.22) | 0,87 (0,01) |
| CBDS21H6 | 21" 540 mm | 2.02 (0.26) | 0,92 (0,01) |
| CBDS24H6 | 24" 610 mm | 2.08 (0.30) | 0,95 (0,01) |

Case Pack: 1

Optional Accessories

| | | | |
|------------------------------|--------------------------------|---------------------------|--|
| Seismic Foot | <input type="checkbox"/> CSEQ3 | Color: Silver | Case pack: 4 each (Bolts not provided) |
| Wall Fastener | <input type="checkbox"/> CSWF | Color: Silver | Case pack: 4 each |
| Identification Tag 6" | <input type="checkbox"/> CSID6 | Color: White/Clear | Case pack: 12 each |

Standard Color

Brushed Graphite (580)

Approvals



Does not include Wall Fastener, Seismic Foot, Corner Connector and ID Tag.

COMPONENT



© Cambro Manufacturing Company 5801 Skylab Road, Huntington Beach, California 92647-2056-U.S.A.
Telephone 714 848 1555 Toll Free 800 854 7631 Customer Service 800 833 3003