

## Camshelving® Elements Series

### 4-Shelf Add-On Units for Stationary Units

Vented Shelf Plates only with

Camguard® antimicrobial

#### 3 Post Heights

64" (1630 mm), 72" (1830 mm), 84" (2140 mm)

#### 3 Shelf Widths

18" (460 mm), 21" (540 mm), 24" (610 mm)

#### 5 Shelf Lengths

36" (910 mm), 42" (1070 mm), 48" (1220 mm),  
54" (1380 mm), 60" (1530 mm)



#### • Add-On Unit includes:

2 stationary posts with leveling feet installed – pre-assembled with post connectors and wedges, 1 bag of 32 stationary traverse dovetails (16 ea. A and B), vented shelf plates (for 4 shelves), 8 stationary traverses and instructions.

### Features & Benefits

#### Strong Technology

Posts and Traverses are built using advanced manufacturing technology and the use of a non-corrosive composite material. The robust design along with unique composite material gives Elements an unprecedented longevity, durability and weight-bearing capacity in the industry. Shelves up 48" (1220 mm) long hold up to 800 lbs. (363 kg) evenly distributed static weight. Shelves 54" – 78" (1380 mm – 1980 mm) long hold up to 600 lbs. (272 kg) each. Shelves connected by Corner Connectors hold up to 400 lbs. (182 kg) on a 36" (910 mm) to 48" (1220 mm) traverse.

#### Hygienic Design

Camshelving Shelf Plates contain Camguard® antimicrobial, a silver-ion technology that inhibits the growth of mold, fungus and bacteria that may cause odors, stains and product degradation. Camguard is incorporated throughout the shelf plate material so that it will never wash off or wear out. The shelf plates remove easily and can be placed in an open end Camrack® (OETR314) for washing. The traverses and post kits are smooth polypropylene so they can be wiped or steam cleaned. The traverses can be easily removed and washed in a conveyor dishwasher.

#### Shelving for Life

Non-corrosive design will endure all areas of operation, dry-storage, coolers, warewashing, freezer and heavy condensation and humidity settings without risk of rusting, peeling, denting, cracking or warping. Functions in temperatures down to -36°F (-30°C) or warm environments up to 190°F (88°C).

#### Fits in Any Space

Innovative design helps maximize on valuable space and provides strength and stability. Straight line components are attached by sharing posts of existing units with no loss of weight-bearing capacity. Corner Connectors bring units together in 90° angle to create corner & U-shape units. Reduces costs by sharing posts of existing unit without the use of add-on clips or "S" hooks.

#### Requires minimal assembly

Can be put together with the use of a rubber mallet. Two-piece dovetails secure Traverses so they can be set easily into place.

#### Flexible Design

Shelves can be easily adjusted at 4" (102 mm) increments. Add a shelf to an existing unit by simply ordering the appropriate Shelf Kit. Adjustable foot on bottom of each stationary Post adjusts easily for floor irregularities so shelf contents are securely stored and leveled.

#### Optional Accessories

Includes Wall Fastener and Seismic Foot. Each are packed 4 per case. Identification Tags clip easily onto traverses.

Item No. \_\_\_\_\_

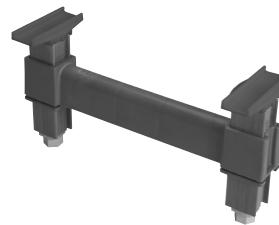
Specifier Identification No. \_\_\_\_\_

Model No. \_\_\_\_\_

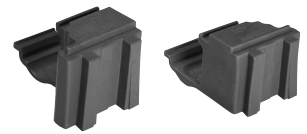
Quantity \_\_\_\_\_



Four Shelf Add-On Unit consists of one Post Kit and four Vented Shelf Kits.



Dunnage Stand  
Recommended for Units  
54" (1380 mm) or longer.



Set of Left and Right Corner  
Connectors (1 set required per shelf).

### Approvals



Components

\* Does not include Wall Fastener and Seismic Foot.

# Camshelving® Elements Series

## 4-Shelf Add-On Units for Stationary Units Vented Shelf Plates only with Camguard® antimicrobial

Item No. \_\_\_\_\_

Specifier Identification No. \_\_\_\_\_

Model No. \_\_\_\_\_

Quantity \_\_\_\_\_

### Four Shelf Add-On Unit

CODE	TRAVERSE IN. MM	CASE LBS. (CUBE)	CASE KG. (CUBE M <sup>3</sup> )
<b>64" (1630 mm) Height 18" (460 mm) Width</b>			
EA183664	36" 910 mm	42.35 (5.92)	19,21 (0,17)
EA184264	42" 1070 mm	46.88 (5.92)	21,27 (0,17)
EA184864	48" 1220 mm	51.30 (5.92)	23,27 (0,17)
EA185464	54" 1380 mm	55.99 (5.92)	25,40 (0,17)
EA186064	60" 1530 mm	60.61 (5.92)	27,49 (0,17)
<b>64" (1630 mm) Height 21" (540 mm) Width</b>			
EA213664	36" 910 mm	47.13 (7.39)	21,38 (0,21)
EA214264	42" 1070 mm	52.41 (7.39)	23,78 (0,21)
EA214864	48" 1220 mm	57.74 (7.39)	26,07 (0,21)
EA215464	54" 1380 mm	62.92 (7.39)	28,54 (0,21)
EA216064	60" 1530 mm	68.29 (7.39)	30,98 (0,21)
<b>64" (1630 mm) Height 24" (610 mm) Width</b>			
EA243664	36" 910 mm	51.50 (8.49)	23,36 (0,24)
EA244264	42" 1070 mm	57.32 (8.49)	25,99 (0,24)
EA244864	48" 1220 mm	63.72 (8.49)	28,91 (0,24)
EA245464	54" 1380 mm	69.70 (8.49)	31,62 (0,24)
EA246064	60" 1530 mm	75.60 (9.46)	34,29 (0,27)
<b>84" (2140 mm) Height 24" (610 mm) Width</b>			
EA243684PKG	36" 910 mm	50.38 (11.61)	22,85 (0,33)
EA244284PKG	42" 1070 mm	56.20 (12.87)	25,49 (0,36)
EA244884PKG	48" 1220 mm	62.60 (10.05)	28,40 (0,28)
EA245484PKG	54" 1380 mm	69.58 (11.90)	31,56 (0,34)
EA246084PKG	60" 1530 mm	75.48 (11.81)	34,24 (0,33)

Due to the size of the 84" (2140 mm) shelving, starter units will be shipped in 2 cartons.

### Corner Connector Set

CODE	DESCRIPTION	CASE LBS. (CUBE)	CASE KG. (CUBE M <sup>3</sup> )
ECC	Right and Left	0.70 (0.4)	0,031 (0,001)

Case Pack: 1 set

### Architect Specs

<b>Posts:</b>	Proprietary non-corrosive composite material.
<b>Post Connectors:</b>	Glass Filled Polypropylene.
<b>Traverses:</b>	Proprietary non-corrosive composite material.
<b>Vented/Solid Shelf Plates:</b>	Reinforced polypropylene with Camguard® antimicrobial.
<b>Corner Connectors:</b>	Glass Filled Polypropylene.
<b>Adjustable Foot:</b>	Glass Filled Nylon.
<b>Seismic Foot:</b>	Stainless Steel post and wide foot plate, 3 holes for bolts. (Bolts not provided)
<b>Divider Bars:</b>	Glass Filled Nylon.
<b>Wall Fastener:</b>	Stainless Steel.
<b>Dovetails:</b>	Resin Nylon
<b>Wedges:</b>	Resin Polypropylene

CODE	TRAVERSE IN. MM	CASE LBS. (CUBE)	CASE KG. (CUBE M <sup>3</sup> )
<b>72" (1830 mm) Height 18" (460 mm) Width</b>			
EA183672	36" 910 mm	42.99 (5.92)	19,50 (0,17)
EA184272	42" 1070 mm	47.53 (5.92)	21,25 (0,17)
EA184872	48" 1220 mm	51.94 (5.92)	23,56 (0,17)
EA185472	54" 1380 mm	56.64 (5.92)	25,69 (0,17)
EA186072	60" 1530 mm	61.25 (5.92)	27,78 (0,17)
<b>72" (1830 mm) Height 21" (540 mm) Width</b>			
EA213672	36" 910 mm	47.77 (7.39)	21,67 (0,21)
EA214272	42" 1070 mm	53.05 (7.39)	24,07 (0,21)
EA214872	48" 1220 mm	58.11 (7.39)	26,36 (0,21)
EA215472	54" 1380 mm	63.56 (7.39)	28,83 (0,21)
EA216072	60" 1530 mm	68.93 (7.39)	31,27 (0,21)
<b>72" (1830 mm) Height 24" (610 mm) Width</b>			
EA243672	36" 910 mm	52.14 (8.49)	23,65 (0,24)
EA244272	42" 1070 mm	57.96 (8.49)	26,29 (0,24)
EA244872	48" 1220 mm	64.36 (8.49)	29,20 (0,24)
EA245472	54" 1380 mm	70.34 (8.49)	31,91 (0,24)
EA246072	60" 1530 mm	76.24 (9.46)	34,58 (0,27)

### Dunnage Stands

CODE	WIDTH IN. MM	CASE LBS. (CUBE)	CASE KG. (CUBE M <sup>3</sup> )
<b>6 1/2" (165 mm) Height</b>			
EDS14	14" 360 mm	1.94 (0.18)	0,88 (0,01)
EDS18	18" 460 mm	2.05 (0.22)	0,93 (0,01)
EDS21	21" 540 mm	2.13 (0.26)	0,96 (0,01)
EDS24	24" 610 mm	2.22 (0.30)	1,01 (0,01)

Case Pack: 1

### Optional Accessories

<b>Seismic Foot</b> (Bolts not provided)	<input type="checkbox"/> CSEQ3	<b>Color:</b> Silver	<b>Case pack:</b> 4 each
<b>Wall Fastener</b>	<input type="checkbox"/> EWF	<b>Color:</b> Silver	<b>Case pack:</b> 4 each
<b>E Corner Connector</b>	<input type="checkbox"/> ECC	<b>Color:</b> Brushed Graphite	<b>Case pack:</b> 2 each
<b>Identification Tag 6"</b>	<input type="checkbox"/> CSID	<b>Color:</b> White/Clear	<b>Case pack:</b> 12 each
<b>Identification Tag 3"</b>	<input type="checkbox"/> CSID3	<b>Color:</b> White/Clear	<b>Case pack:</b> 12 each

### Standard Colors

Brushed Graphite (580)

### Approvals



**Components**

\* Does not include Wall Fastener and Seismic Foot.



© Cambro Manufacturing Company 5801 Skylab Road, Huntington Beach, CA 92647-2056, U.S.A.  
Telephone 714 848 1555 Toll Free 800 854 7631 Customer Service 800 833 3003