

Pizza Racks

Pizza Pan/ Dough Box Racks

ALUMINUM CONSTRUCTION

Item No. _____

Quantity _____

Job Name _____

Spec No. _____

Applications: Mobile racks and work tables for holding, storing and transporting of 17" and 19" round pizza pan or 16" and 17" Sicilian pizza pans. Pizza Dough Box Racks are designed to accommodate 18" x 26" Channel Mfg. Pizza Dough Boxes.

Construction: Heavy duty, high tensile extruded aluminum. Type 6063-T5 alloy. Lifetime guarantee against rust.

Tray Slides: Pizza Pan Rack slides are 7/8" x 4-1/4" extruded aluminum angle heli-arc welded to frame. Bottom load ledge design. Pizza Dough Box Racks have 1" x 2" angle tray slides.

Frame and Cross Supports: Vertical and horizontal frame sections are 1" extruded aluminum tubing and 1" solid flat bar extruded aluminum.

Casters: Stem type 5" diameter, full swivel design. Non-marking polyurethane wheel. Caster stems are securely bolted to frame to facilitate replacements.

Options:

/O11-Caster Brake /O09-Pan Stop /P-Work Top - Thermoplastic
/O24-Corner Bumpers (4) /VB-Vertical Bumpers
/PB-Perimeter Bumper BA-Solid Bottom

Pizza Pan Half Size Racks

Model	Spacing/ Capacity	ALUMINUM WORKTABLE			
		H	W	D	Weight
PR-12	2" / 12 Pans	32 1/2"	22"	20"	37
PR-24	2" / 24 Pans	32 1/2"	43"	20"	73
UNDER COUNTER					
PR-11	2" / 11 Pans	30 1/2"	22"	20"	35

Pizza Pan Full Size Racks

Model	Spacing/Capacity	H	W	D	Weight
PR-26	2" / 26 Pans	62 1/2"	22"	20"	53
PR-52	2" / 52 Pans	62 1/2"	43"	20"	104

Pizza/Dough Box Racks

Model	Spacing/Capacity	H	W	D	Weight
RB-4	FL 4" / 15 Pans	70"	21"	26"	35
RB-5	FL 5" / 12 Pans	70"	21"	26"	32
ALUMINUM WORKTABLE					
RB47A	FL 4" / 7 Pans	36"	21"	26"	35

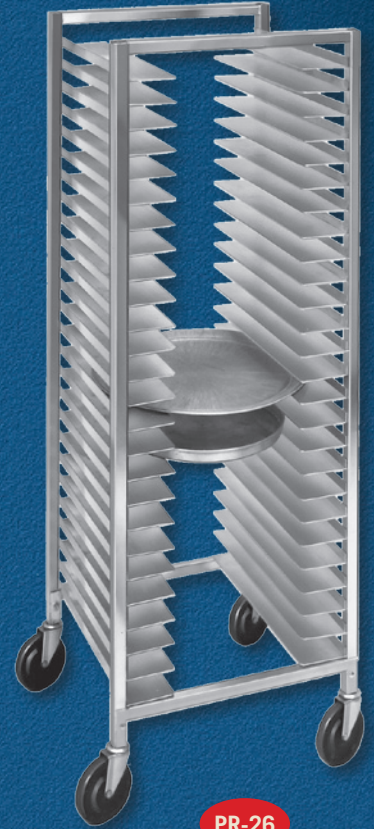
Custom Sizes
Available



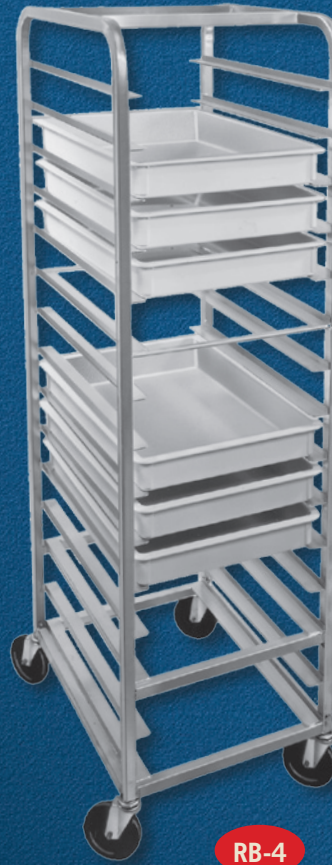
Aluminum Work Top



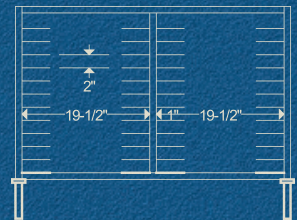
PR-15



PR-26



RB-4



The PR-24 and PR-52 are double section racks per above diagram

CHANNEL
MANUFACTURING, INC.

55 Channel Drive • Port Washington, NY 11050-2216
8891 NW 102nd Street • Medley, FL 33178
Tel: 516-944-6271 • Fax: 516-944-0625
Toll Free: 866-712-7283

www.channelmfg.com • Email: sales@channelmfg.com