

DROP-IN SEALED WELL ELECTRIC UNIT



DISW-4-240 Shown

Item #:	_____	Qty #:	_____
Model #:	_____		
Project #:	_____		

FEATURES:

- Fiberglass insulation between each compartment
- 12" x 20" die stamped openings
- Full stainless steel construction inside and out.
- Remote control panel
- Units are supplied with drains for wet or dry application
- Includes 1" I.P.S. Drain(s) with Gate Valve

MATERIAL:

- TOP:** 18 gauge #304 stainless steel with die stamped pan openings and self rimmed. (12" x 20" opening)
- BODY:** 20 gauge galvanized



ELECTRICAL:

- 120V units yield 1100 Watts
- 208V/240V dual voltage units yield 825 Watts at 208V and 1100 Watts at 240V
- Infinite control knobs
- Indicator lights

Unit to be hard wired in the field. See Below for optional Cords. Please consult the factory for more information.

Model #	Length	Width	# of Wells	Cut-Out Size	Volts	Amps	Watts	Approx. Wt.	Cu. Ft.
DISW-1-120	16-1/2"	24-1/2"	1	23-1/4" x 15-1/4"	120	9.17	1100	73 lbs.	6
DISW-2-120	30-1/2"	24-1/2"	2	23-1/4" x 29-1/4"	120	18.33	2200	110 lbs.	6
DISW-3-120	44-1/2"	24-1/2"	3	23-1/4" x 43-1/4"	120	27.51	3300	135 lbs.	6
DISW-1-2 40	16-1/2"	24-1/2"	1	23-1/4" x 15-1/4"	208/240	3.97/4.58	825/1100	73 lbs.	6
DISW-2-240	30-1/2"	24-1/2"	2	23-1/4" x 29-1/4"	208/240	7.94/9.16	1650/2200	110 lbs.	6
DISW-3-240	44-1/2"	24-1/2"	3	23-1/4" x 43-1/4"	208/240	11.91/13.74	2475/3300	135 lbs.	18
DISW-4-240	58-1/2"	24-1/2"	4	23-1/4" x 57-1/4"	208/240	15.88/18.32	3300/4400	180 lbs.	23
DISW-5-240	72-1/2"	24-1/2"	5	23-1/4" x 71-1/4"	208/240	19.85/22.90	4125/5500	208 lbs.	35
DISW-6-240*	86-1/2"	24-1/2"	6	23-1/4" x 85-1/4"	208/240	23.82/27.48	4950/6600	275 lbs.	35

*6-well units include two sets of control panels

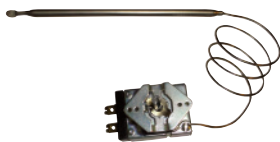
NOTE: Units are not designed to cook or heat frozen or refrigerated foods. Food placed in tables should already be hot, and the table will maintain the proper temperatures

Optional Accessories:

Visit our website for additional Accessories



Manifold Drains (Per Well)
Add The Suffix **-M** To The Model Number.







Thermostatic Controls
Add The Suffix **-T** To The Model Number.



Adapter Bars
SU-45A 12" x 1" Adapter Bar.

3-Phase Upgrade
SU-72 Upgrade to 240 volt units to 3 Phase Wiring.

Cord with NEMA Plugs

SU-P-234	6' Cord with NEMA 5-15P plug for 1 well, 120v Units	
SU-P-231	6' Cord with NEMA L5-30P plug for 2 or 3 well, 120v Unit	
SU-P-232	6' Cord with NEMA 6-20P plug for 1, 2, 3 or 6 well (6 well unit requires 2 Cords), 240v Units	
SU-P-233	6' Cord with NEMA L6-30P plug, for 4 or 5 well, 240v Units	

DIMENSIONS and SPECIFICATIONS

TOL ± .125"

ALL DIMENSIONS ARE TYPICAL

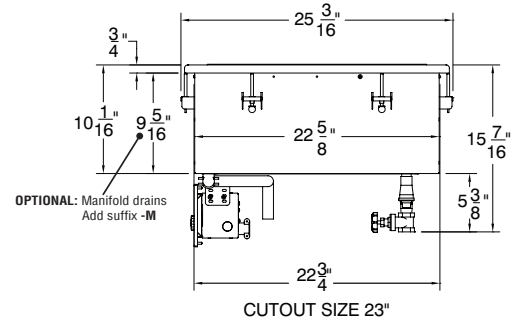
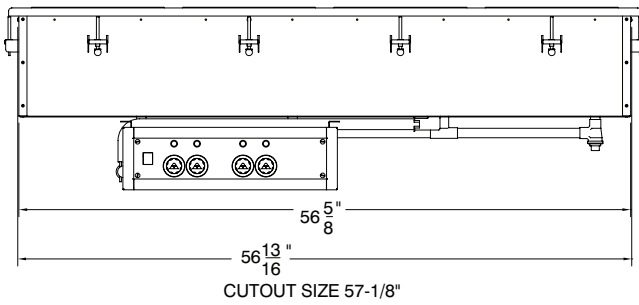
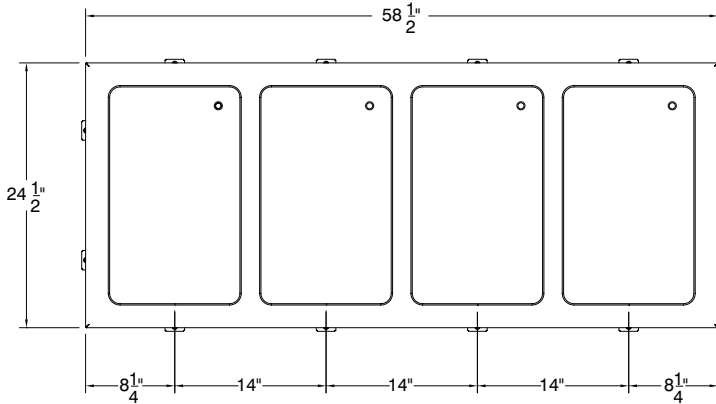


Diagram showing a control panel with dimensions: CUT-OUT LENGTH (A), CUTOUT HEIGHT (B), and FRONT PANEL (C). A 24.00" CABLE LENGTH is also indicated.

CONTROL PANEL SPECS

Model #	Cut-Out Size Length (A)	Cut-Out Size Height (B)	Front Panel Length (C)
DISW-1	12-3/8"	4 -1/2"	13-1/2"
DISW-2	12-3/8"	4 -1/2"	13-1/2"
DISW-3	12-3/8"	4 -1/2"	13-1/2"
DISW-4	18-3/4"	4 -1/2"	19-7/8"
DISW-5	18-3/4"	4 -1/2"	19-7/8"
DISW-6*	18-3/4"	4 -1/2"	19-7/8"

*6-well units include one control panel.
Two separate control panels are available upon request.

Unit to be hard wired in the field. See Accessories for optional Cords.
Please consult the factory for more information.

