



# SOLID TOP TABLES



These units are designed to be used to showcase fine foods, dessert displays, or as beverage stands.

## FEATURES:

Stainless steel body and top  
Stainless steel 8" support shelf with removable  
3/8" thick poly cutting board - Ships K.D.

## MATERIAL:

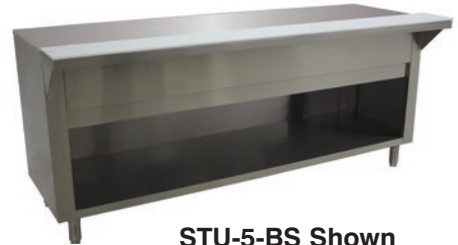
**TOP:** 20 gauge #302 stainless steel  
**BODY:** 22 gauge #430 stainless steel  
**CUTTING BOARD:** White Thermoplastic  
**CUTTING BOARD BRACKETS:** 16 gauge, #302 stainless steel

	UNDERSHELF SERIES	-BS and -DR SERIES
<b>TOP</b>	20 Gauge #302 Stainless Steel	22 Gauge #430 Stainless Steel
<b>LEGS</b>	1 5/8" Dia. Tubular Galvanized Steel Leg w/ Plastic Bullet Feet	18 Gauge Stainless Steel Bolt-On Legs w/ Bullet Feet
<b>LOWER SHELF</b>	Galvanized Undershef	18 Gauge Stainless Steel

Item #: \_\_\_\_\_ Qty #: \_\_\_\_\_  
Model #: \_\_\_\_\_  
Project #: \_\_\_\_\_



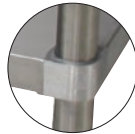
Optional TA-255P Casters Available



STU-5-BS Shown



STU-3 Shown



**Featuring as Standard:**  
**"THE PROVEN"**  
**ORIGINAL ADVANCE TABCO**  
**Adjustable Undershef with Die Cast Leg Clamp**



STU-5-DR Shown

Model #	Length (L)	Width	Inside Cabinet Dimensions	Weight (lbs)	Cubic Feet
<b>TABLE WITH UNDERSHELF</b>					
STU-2	31-13/16"	22.625"	N/A	90 lbs.	28
STU-3	47-1/8"	22.625"	N/A	118 lbs.	41
STU-4	62-7/16"	22.625"	N/A	150 lbs.	55
STU-5	77-3/4"	22.625"	N/A	168 lbs.	67
<b>TABLES WITH ENCLOSED BASE</b>					
STU-2-BS	31-13/16"	22.625"	25.3" x 22.4" x 16"	115 lbs.	28
STU-3-BS	47-1/8"	22.625"	40.63" x 22.4" x 16"	143 lbs.	41
STU-4-BS	62-7/16"	22.625"	55.88" x 22.4" x 16"	185 lbs.	55
STU-5-BS	77-3/4"		71.25" x 22.4" x 16"	203 lbs.	67
<b>TABLES WITH CABINET BASE AND SLIDING DOORS</b>					
STU-2-DR	31-13/16"	22.625"	25.3" x 22.4" x 16"	125 lbs.	28
STU-3-DR	47-1/8"	22.625"	40.63" x 22.4" x 16"	153 lbs.	41
STU-4-DR	62-7/16"	22.625"	55.88" x 22.4" x 16"	195 lbs.	55
STU-5-DR	77-3/4"	22.625"	71.25" x 22.4" x 16"	213 lbs.	67



Customer Service Available To Assist You **1-800-645-3166** 8:30 am - 8:00 pm E.S.T.

For Orders:

Email: [customer@advancetabco.com](mailto:customer@advancetabco.com) or Fax To: 631-242-6900

For Smart Fabrication™ Quotes:

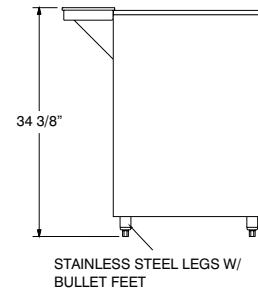
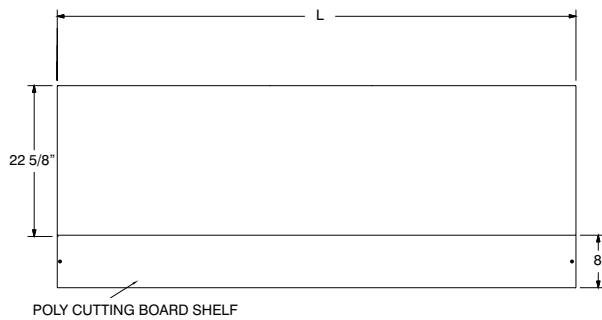
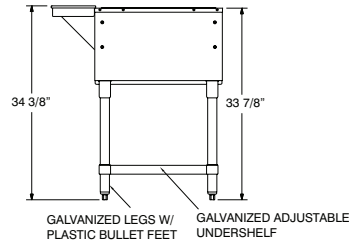
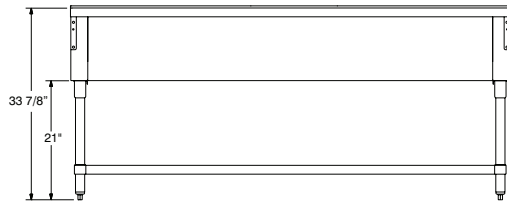
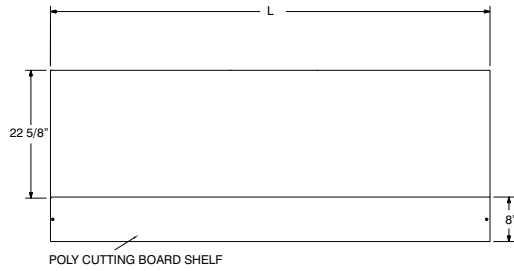
Email: [smartfab@advancetabco.com](mailto:smartfab@advancetabco.com) or Fax To: 631-586-2933

# DIMENSIONS and SPECIFICATIONS

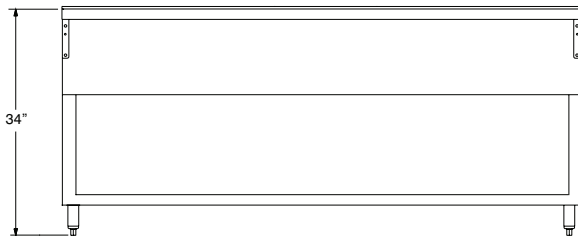
TOL ± .125"

ALL DIMENSIONS ARE TYPICAL

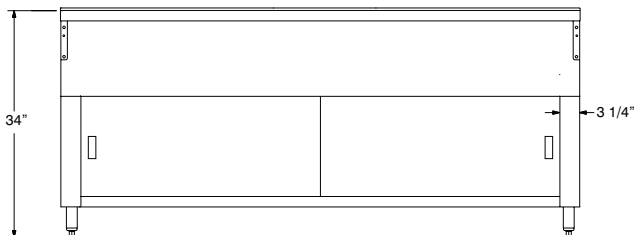
## UNDERSHELF SERIES



## -BR SERIES



## -DR SERIES



### Stainless Steel Legs & Undershef Upgrade



2 Well Table	3 Well Table	4 Well Table	5 Well Table
SU-23A	SU-23B	SU-23C	SU-23D

