

VALUE LINE TRAY DELIVERY CARTS - ENCLOSED

Accommodates 14" x 18", 15" x 20" Trays and
Dinex Room Service Tray DX1089RS152003



Item Numbers

- ☐ DXICT202D
- ☐ DXICT242D
- ☐ DXICT282D
- ☐ DXICT322D

Pass Thru Model

- ☐ DXICTPT202D
- ☐ DXICTPT242D
- ☐ DXICTPT282D
- ☐ DXICTPT322D

Application

The Value Line Carts are designed for transporting trays style meals. The all stainless steel cart features fixed tray slides with 5-1/4" spacing. This cart will accommodate 2 trays per slide of the following sizes, 14" x 18" and 15" x 20" trays as well as the Dinex Room Service tray (DX1089RS152003).

Construction

General: Dinex Room Service carts are fabricated using 1" square tubing frame with welded 18-gauge pre-formed side panels/tray slides. The top, bottom and single panel door are 18-gauge, stainless steel. The door comes standard with a recessed door pull and features magnets and a transport latch to keep the door closed. The door has a 270 degree swing with magnets to keep the door in the opened position.

Casters: Dinex exclusive silent soft tread 4- 5" diameter caster 2-swivel with brakes.

Standard Features

- All stainless steel
- Pull type door handle
- Transport latch and magnets
- Low Profile
- Accommodates 14" x 18", 15" x 20" Dinex Room Service tray DX1089RS152003
- Dinex exclusive silent casters

Options

- Corner Bumpers
- Wrap around bumper
- Push Handle
- Top Rail options
- Drains

Warranty

One year parts and labor.

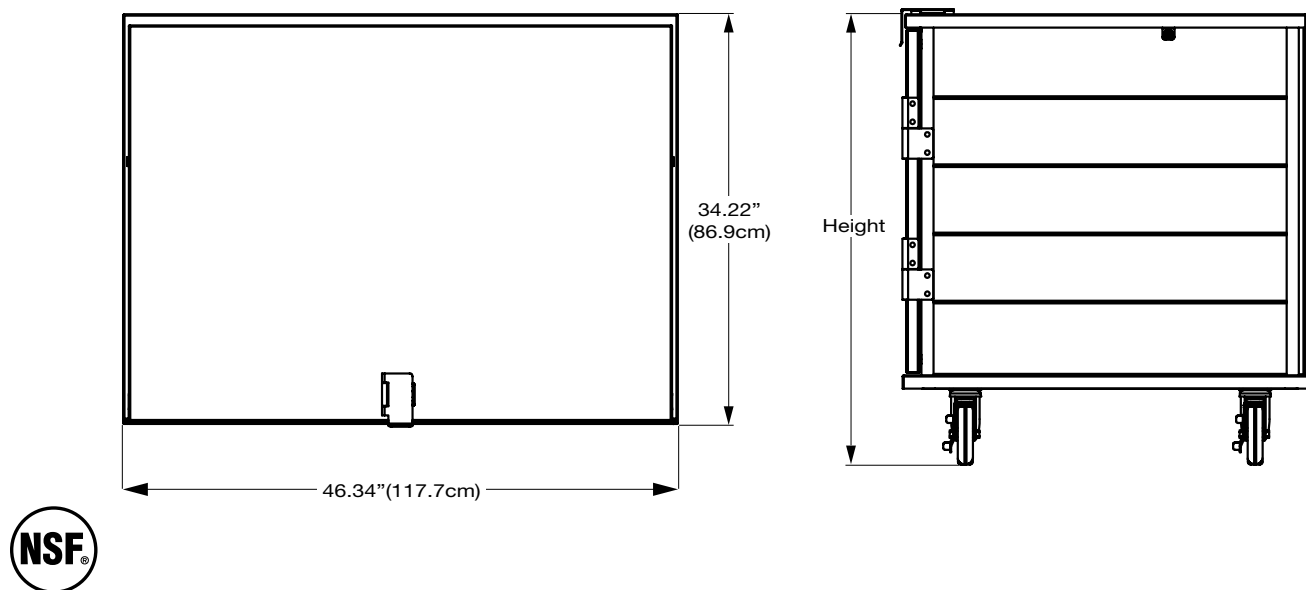
DINEX®

Building 2, Suite 106
628 Hebron Avenue
Glastonbury, CT 06033
800.523.9752 Fax: 860.652.3135
www.dinex.com

159-REV 10/09

VALUE LINE TRAY DELIVERY CARTS - ENCLOSED

Accommodates 14" x 18", 15" x 20" Trays and
Dinex Room Service Tray DX1089RS152003



Items and Dimensions

ITEM NUMBER	MODEL NUMBER	LENGTH	DEPTH	HEIGHT	SHIP WEIGHT	SHIP CUBE	TRAY SPACING	TRAY CAPACITY
DXICT202D	ICT/202D	46.34" (117.7cm)	34.22" (86.9cm)	37.15" (94.4cm)	300 lb. (136kg)	33	5.25"	20
DXICTPT202D	ICTPT/202D	46.34" (117.7cm)	34.22" (86.9cm)	37.15" (94.4cm)	310 lb. (141kg)			
DXICT242D	ICT/242D	46.34" (117.7cm)	34.22" (86.9cm)	42.78" (108.7cm)	320 lb. (145kg)	38	5.25"	24
DXICTPT242D	ICTPT/242D	46.34" (117.7cm)	34.22" (86.9cm)	42.78" (108.7cm)	330 lb. (150kg)			
DXICT282D	ICT/282D	46.34" (117.7cm)	34.22" (86.9cm)	48.40" (122.9cm)	330 lb. (150kg)	44.4	5.25"	28
DXICTPT282D	ICTPT/282D	46.34" (117.7cm)	34.22" (86.9cm)	48.40" (122.9cm)	340 lb. (154kg)			
DXICT322D	ICT/322D	46.34" (117.7cm)	34.22" (86.9cm)	54.03" (137.2cm)	340 lb. (154kg)	49.2	5.25"	32
DXICTPT322D	ICTPT/322D	46.34" (117.7cm)	34.22" (86.9cm)	54.03" (137.2cm)	350 lb. (154kg)			



Please confirm that you have the most current specification sheet by visiting www.dinex.com.
Dinex® reserves the right to change specifications and product design without notice.
Such revisions do not entitle the buyer to corresponding changes, improvements, additions or replacements for previously purchased equipment.

Printed in USA

DINEX®

Building 2, Suite 106
628 Hebron Avenue
Glastonbury, CT 06033
800.523.9752 Fax: 860.652.3135
www.dinex.com

159-REV 10/09