



Outperform every day.™

**Project:**  
**Item Number:**  
**Quantity:**

Short Side Hot Drop-ins

The Vollrath Company, L.L.C.

## SHORT SIDE HOT DROP-INS



Short Side Hot Drop-ins

### DESCRIPTION

The Short Side Hot Drop-ins turn full-size pans sideways for a more narrow presentation. They are designed for top-mount installation and do not require hard-wiring.

Full-perimeter drip-edge contains spills and condensation within the stainless steel countertop area of the drop-in. Drip-edge adds additional strength to the flange area.

Drop-in meets NSF4 performance standards only when using moist heat. Operation with water is required for even heating of the food product.

High-density glass-fiber insulation allows zero-clearance installation.

Stainless steel wells allow use of full-size and fractional pans up to 6" (15.2 cm) deep while still providing moist heat. Adaptor bars are recommended when using fractional pans.

**WARRANTY:** All models shown come with Vollrath's standard warranty against defects in materials and workmanship. For full warranty details, please refer to [www.Vollrath.com](http://www.Vollrath.com).

### Agency Listings



Due to continued product improvement, please consult [www.vollrath.com](http://www.vollrath.com) for current product specifications.

Item Numbers			Description	
<b>1000 Watts Per Well</b>				
<b>Standard</b>	<b>Manifold</b>	<b>Manifold w/ Auto-Fill</b>	<b>Control</b>	<b>Voltage</b>
<b>Two Well</b>				
36646	3664620	3664630	Thermostatic	208-240
36647	3664720	3664730	Infinite	
<b>Three Well</b>				
36648	3664820	3664830	Thermostatic	208-240
36649	3664920	3664930	Infinite	
<b>Four Well</b>				
36650	3665020	3665030	Thermostatic	208-240
36651	3665120	3665130	Infinite	
<b>625 Watts Per Well</b>				
<b>Two Well</b>				
36640	3664020	3664030	Thermostatic	120
36641	3664120	3664130	Infinite	
<b>Three Well</b>				
36642	3664220	3664230	Thermostatic	120
36643	3664320	3664330	Infinite	
<b>Four Well</b>				
36644	3664420	3664430	Thermostatic	120
36645	3664520	3664530	Infinite	

### FEATURES

- Top is 18-gauge stainless steel
- Breaker gasket included for installation under drip-edge
- Flat work surface around opening
- Power indicator light
- Standard drain is ½" (1.3 cm) stainless steel fitting welded to pan with ball valve shutoff below exterior housing
- Manifold drain option is 1" (2.5 cm) copper tubing and retains individual well shut-off and adds manifold shutoff.
- Auto-fill eliminates the need to monitor wells and add water, reducing operating and labor costs. Attaches easily to manifold drain assembly using simple tools. The check valve/siphon prevents cross contamination of drain and potable water lines. Requires separate electrical service. See Auto-fill specification sheet for details.
- Unit insulated on sides, between wells, and below element assembly with high-density glass fiber insulation.
- Exterior housing is 20-gauge galvanized steel
- 6 ft (182.2 cm) cord with plug
- Stainless control panel has 3 ft (91.4 cm) teethered flexible rubber cord. Shipped connected to drop-in, but may also be remotely mounted.
- Positioning clips provided to center drop-in within cutout
- Standard mounting clips adjustable for up to 3" (7.6 cm) thick counters
- One-year parts and labor warranty

Approvals	Date



Outperform every day.™  
[www.vollrath.com](http://www.vollrath.com)

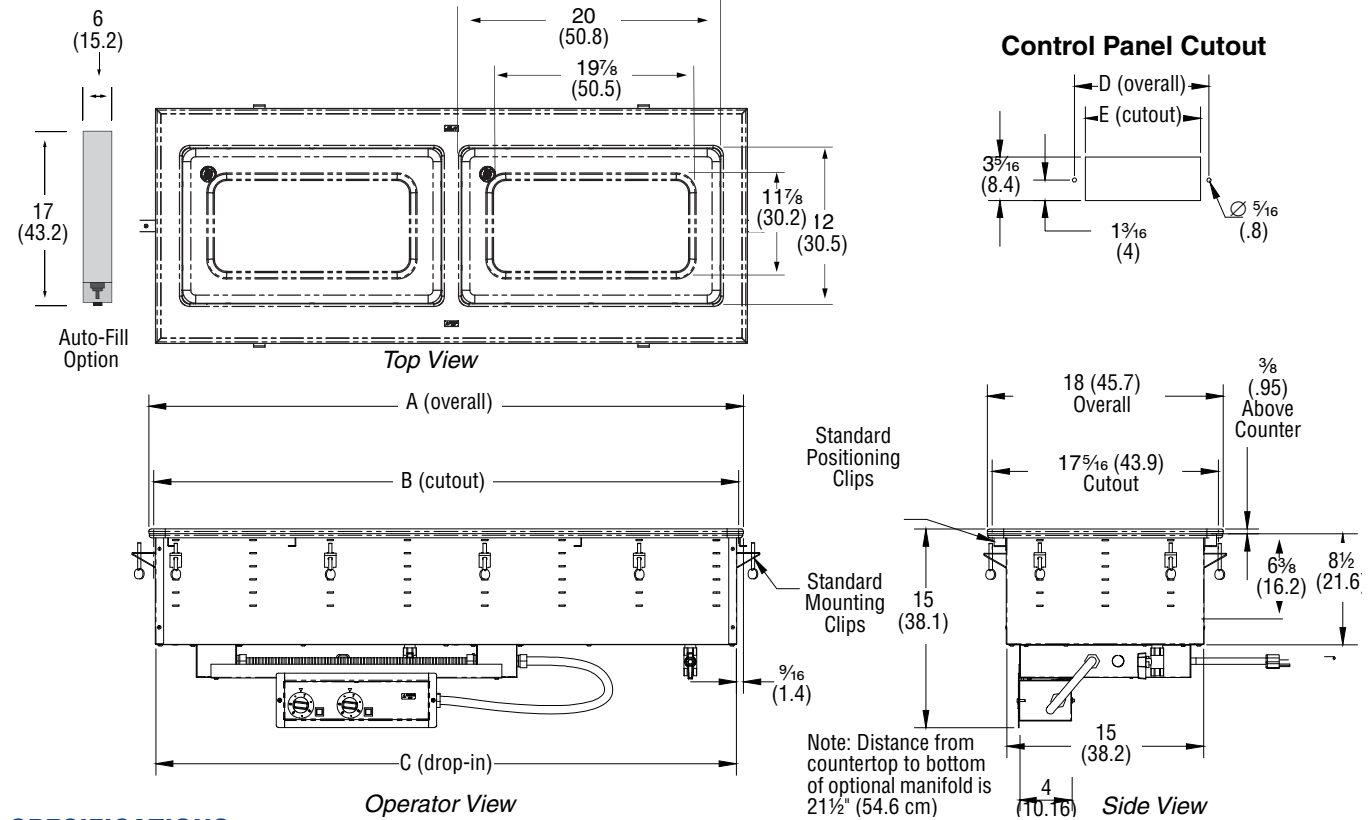
The Vollrath Company, L.L.C.  
1236 North 18th Street  
Sheboygan, WI 53081-3201 U.S.A.  
Customer Service: 800.628.0830  
Canada Customer Service: 800.695.8560  
Main Fax: 800.752.5620 or 920.459.6573

Technical Services: 800.628.0832  
Technical Services Fax: 920.459.5462

# SHORT SIDE HOT DROP-INS

## DIMENSIONS (Shown in inches (cm))

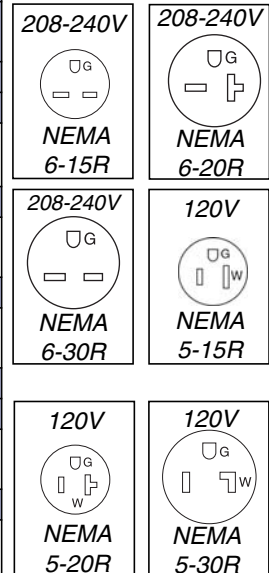
**Note:** Opening cutout must have a 7/8" (2.2 cm) corner radius.



## SPECIFICATIONS

Item Numbers				Dimensions					Electrical		
				Module			Control Box		Voltage	Amps	Plug
Standard	Manifold	Manifold w/ Auto-Fill	(A) Overall	(B) Cutout	(C) Drop-in	(D) Overall	(E) Cutout				
<b>1000 Watts Per Well</b>											
<b>Two Well</b>											
36646	3664620	3664630	Thermostatic	45 7/16 (114.6)	44 1/16 (113.5)	44 3/8 (112.7)	11 3/4 (29.9)	11 1/4 (28.6)	208 - 240	7.2 - 8.3	NEMA 6-15P
36647	3664720	3664730	Infinite								
<b>Three Well</b>											
36648	3664820	3664830	Thermostatic	66 7/8 (169.8)	66 1/8 (167.9)	65 3/4 (167.1)	15 1/2 (39.4)	15 (38.1)	208 - 240	10.8 - 12.5	NEMA 6-20P
36649	3664920	3664930	Infinite								
<b>Four Well</b>											
36650	3665020	3665030	Thermostatic	88 9/16 (225)	87 1/2 (222.3)	87 9/16 (221.5)	19 1/4 (48.9)	18 13/16 (47.6)	208 - 240	14.4 - 16.7	NEMA 6-30P
36651	3665120	3665130	Infinite								
<b>625 Watts Per Well</b>											
<b>Two Well</b>											
36640	3664020	3664030	Thermostatic	45 7/16 (114.6)	44 1/16 (113.5)	44 3/8 (112.7)	11 3/4 (29.9)	11 1/4 (28.6)	120	10.4	NEMA 5-15P
36641	3664120	3664130	Infinite								
<b>Three Well</b>											
36642	3664220	3664230	Thermostatic	66 7/8 (169.8)	66 1/8 (167.9)	65 3/4 (167.1)	15 1/2 (39.4)	15 (38.1)	120	15.6	NEMA 5-20P
36643	3664320	3664330	Infinite								
<b>Four Well</b>											
36644	3664420	3664430	Thermostatic	88 9/16 (225)	87 1/2 (222.3)	87 9/16 (221.5)	19 1/4 (48.9)	18 13/16 (47.6)	120	20.8	NEMA 5-30P
36645	3664520	3664530	Infinite								

### Receptacles



Outperform every day.™

[www.vollrath.com](http://www.vollrath.com)

The Vollrath Company, L.L.C.  
 1236 North 18th Street  
 Sheboygan, WI 53081-3201 U.S.A.  
 Customer Service: 800.628.0830  
 Canada Customer Service: 800.695.8560  
 Main Fax: 800.752.5620 or 920.459.6573

Technical Services: 800.628.0832  
 Technical Services Fax: 920.459.5462