

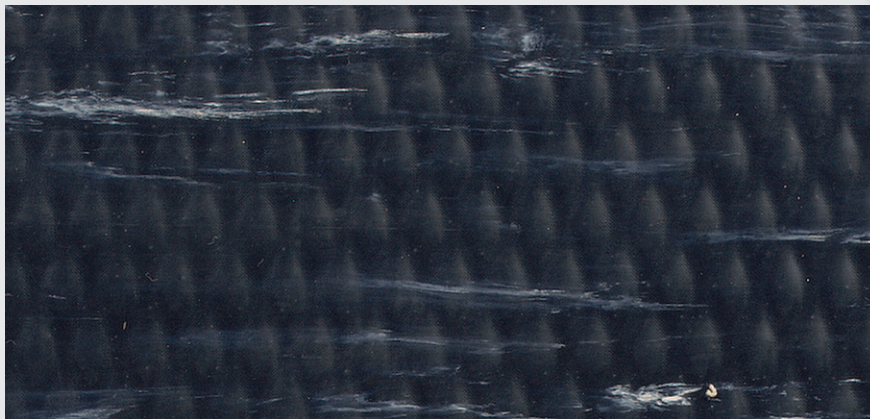


midnight swirl

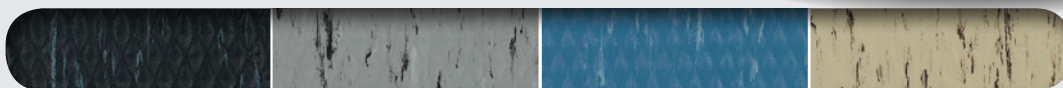
a
the andersen company

HOG HEAVEN[®] MARBLE TOP

ANTI-FATIGUE/INDOOR



- Closed cell Nitrile cushion provides long lasting comfort
- Extra thick (.170") PVC/rubber top ensures long life
- Smooth diamond patterned top allows worker to pivot freely
- Borders will not crack or curl
- Surface is easy to clean
- Cushion is not glued on but is permanently molded to top, eliminating the possibility of delamination
- Available in 5/8" and 7/8" thicknesses
- Anti-static



10 midnight swirl

11 granite dusk

12 blue merle

13 amber maple

100%
customer satisfaction
GUARANTEED

NFSI
HIGH-TRACTION



**MADE
IN THE
USA**

ANTI-FATIGUE/INDOOR

HOG HEAVEN® MARBLE TOP



5/8" thickness Product No. 448

Size(ft.)	Size Approx.(in.)	Quantity/Price			Shipping Wt. (lbs)
		1-6	7-30	31+	
2 x 3	24 x 32	74.39	70.68	68.45	8
3 x 5	32 x 58	185.97	176.66	171.09	20
3 x 12	32 x 142	446.31	424.00	410.61	45
4 x 6	46 x 69	297.54	282.66	273.74	31

Special Sizes:

Prices per Linear Foot (\$). Rounded up to the Nearest Foot. 60' Maximum Length.
Shipping Wt. for Special Sizes: 5/8" = 1.30 lbs/sq ft.

3' (32") WIDTHS	40.90
4' (46") WIDTHS	54.55

7/8" thickness Product No. 449

Size(ft.)	Size Approx.(in.)	Quantity/Price			Shipping Wt. (lbs)
		1-6	7-30	31+	
2 x 3	24 x 32	84.21	80.00	77.48	10
3 x 5	32 x 58	210.50	199.98	193.67	23
3 x 12	32 x 142	505.23	479.97	464.81	53
4 x 6	46 x 69	336.83	319.99	309.89	36

Special Sizes:

Prices per Linear Foot (\$). Rounded up to the Nearest Foot. 60' Maximum Length.
Shipping Wt. for Special Sizes: 7/8" = 1.50 lbs/sq ft.

3' (32") WIDTHS	46.31
4' (46") WIDTHS	61.75

