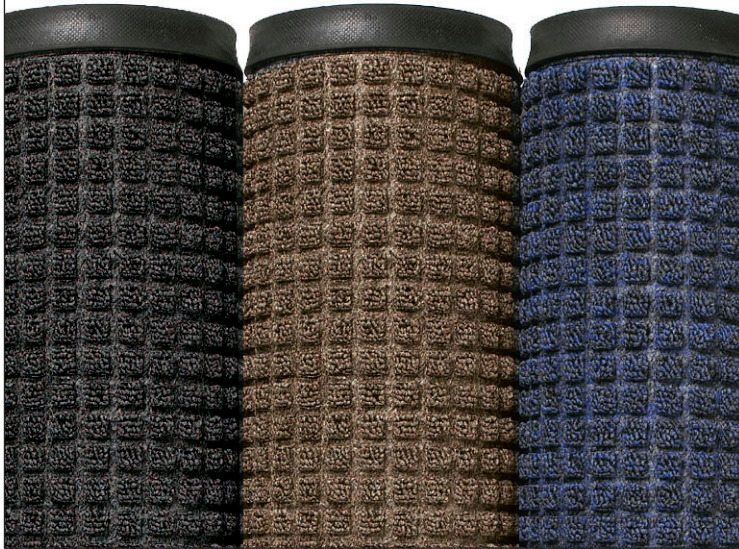




**TEKNOR APEX**  
Under License To:  
Superior Manufacturing Group

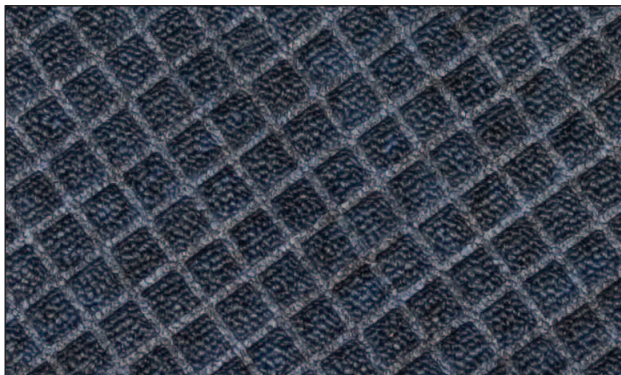
## T35 Water Master Entrance Matting

Available Colors: Charcoal, Dark Brown, Slate Blue



Water Master entrance mats are intended for use in medium to heavy traffic areas, the raised, crushproof waffle design aggressively scrapes and cleans, while the rubber-edged perimeter entraps dirt and moisture for superior water and soil control. Molded rubber "cleats" on the underside of the mat grip the underlying surface minimizing mat movement. Water Master uses a stain and fade resistant fiber to keep colors sharp and the mat looking new, and is highly recommended for "Green Cleaning" applications.

QUALITY METER	FAIR	GOOD	BETTER	BEST	ULTIMATE
water absorption					
dirt scraping					
outdoor use					
wearability					



### **Application Requirements:**

Good water absorbing qualities, aesthetically pleasing and functional, "Green Cleaning" applications

- 100% polypropylene stain and fade resistant fibers
- Raised waffle pattern facilitates scraping and drying, while the channel design retains moisture and debris
- Raised rubber border acts as a containment barrier that traps moisture and debris
- 26 ounces of tufted yarn per sq. yard for increased moisture retention
- Recommended product for "Green Cleaning" applications
- Molded rubber cleats on the underside of the mat grip underlying surfaces and minimizes mat movement
- Overall Thickness: 3/8"
- Stock Sizes: 3' x 5', 4' x 6'