

Perlick® SELF-CONTAINED BACK BAR REFRIGERATOR

1-, 2-, 3- AND 4-DOOR



BBS36 with optional glass/wine stainless steel door shown



BBS36 with optional wine drawers shown



eco friendly
R290
Hydrocarbon
Refrigerant

JOB	
AREA	
ITEM NO.	
MODEL NO.	

BBS36	1-Door Model
BBS60	2-Door Model
BBS84	3-Door Model
BBS108	4-Door Model

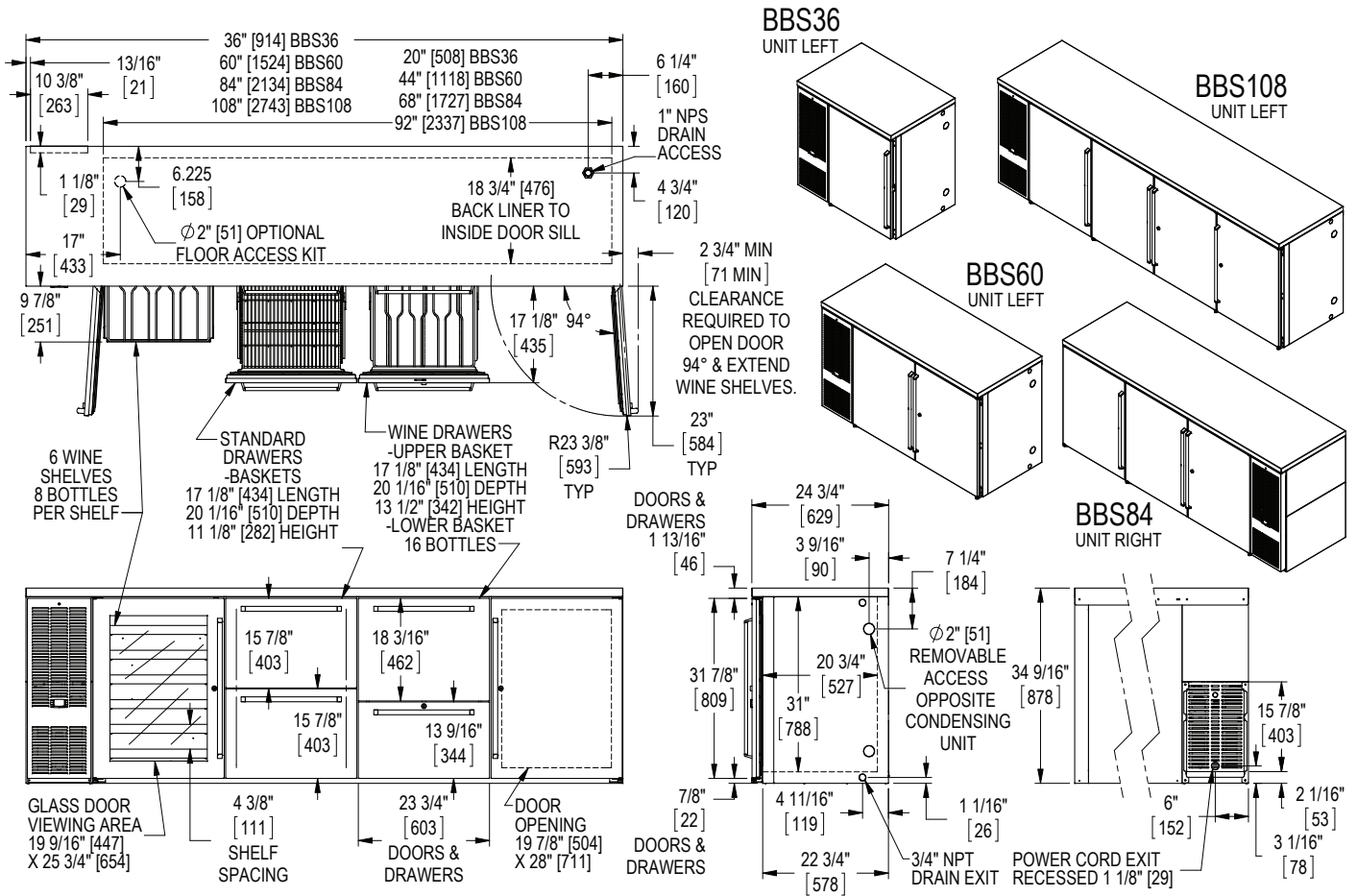
NSF/ANSI Standard 7 Listed for open food storage.
Note: Models furnished with wine temperature are listed for the storage and display of bottled and canned products only.

MODEL NUMBERS		BBS36	BBS60	BBS84	BBS108
NUMBER OF COMPARTMENTS		1	2	3	4
EXTERIOR CABINET DIMENSIONS	Length - in. (mm)	36 (914)	60 (1524)	84 (2134)	108 (2743)
	Depth - in. (mm)	24¾ (629)	24¾ (629)	24¾ (629)	24¾ (629)
	Height - in. (mm)	34⅞ (878)	34⅞ (878)	34⅞ (878)	34⅞ (878)
INTERIOR CABINET DIMENSIONS	Length - in. (mm)	20 (508)	44 (1118)	68 (1727)	92 (2337)
	Depth - in. (mm)	18¾ (476)	18¾ (476)	18¾ (476)	18¾ (476)
	Height - in. (mm)	28½ (724)	28½ (724)	28½ (724)	28½ (724)
INTERNAL VOLUME Net. Cu. Ft. (Litres)		7.4 (210)	16 (453)	24.8 (702)	33.5 (949)
PRODUCT CAPACITY	CASE PACK - 12 OZ. BOTTLE/CAN	182/273	371/553	581/868	791/1183
	STAGGERED - 12 OZ. BOTTLE/CAN	196/292	400/592	628/932	856/1272
SHIPPING WEIGHT Lbs. (kg.)		254 (115)	340 (154k)	490 (222)	671 (304)
ELECTRICAL SPECIFICATIONS	Electrical Supply	120 VAC/60 Hz/1 Ph	120 VAC/60 Hz/1 Ph	120 VAC/60 Hz/1 Ph	120 VAC/60 Hz/1 Ph
	Running Load Amps	1.8	2.5	4.2	4.2
	Electrical Connection	Cord connected	Cord connected	Cord connected	Cord connected
	Cord Plug Type	NEMA 5-15	NEMA 5-15	NEMA 5-15	NEMA 5-15
	Cord Length	8'	8'	8'	8'
	Defrost Initiation	Automatic	Automatic	Automatic	Automatic
	Defrost Type	Off cycle	Off cycle	Off cycle	Off cycle
	Thermostat	Digital control	Digital control	Digital control	Digital control
REFRIGERATION SPECIFICATIONS	Lighting Type	LED	LED	LED	LED
	Horsepower	1/6	1/5	1/4	1/4
	Refrigerant	R290	R290	R290	R290
	Refrigerant Charge (grams)	90	100	90	90
	Factory Temperature Setting - Refrigerator F (C)	38° (3.3°)	38° (3.3°)	38° (3.3°)	38° (3.3°)
	Temperature Range - Refrigerator F (C)	33°-40° (0.5°-4.5°)	33°-40° (0.5°-4.5°)	33°-40° (0.5°-4.5°)	33°-40° (0.5°-4.5°)
	Factory Temperature Setting - White Wine F (C)	50°-55° (10.0°-13.0°)	50°-55° (10.0°-13.0°)	50°-55° (10.0°-13.0°)	50°-55° (10.0°-13.0°)
	Factory Temperature Setting - Red Wine F (C)	60°-65° (15.5°-18.0°)	60°-65° (15.5°-18.0°)	60°-65° (15.5°-18.0°)	60°-65° (15.5°-18.0°)
	Temperature Range - Wine F (C)	50°-65° (10.0°-18.0°)	50°-65° (10.0°-18.0°)	50°-65° (10.0°-18.0°)	50°-65° (10.0°-18.0°)
	Condensing Unit Location	Left or Right	Left or Right	Left or Right	Left or Right
	Expansion Device	Capillary tube	Capillary tube	Capillary tube	Capillary tube
Pull-Out Condensing Unit	Yes	Yes	Yes	Yes	
Front Vented	Yes	Yes	Yes	Yes	
PLUMBING		Automatically	Automatically	Automatically	Automatically

Perlick® SELF-CONTAINED BACK BAR REFRIGERATOR

1-, 2-, 3- AND 4-DOOR

Note: Open floor drain not provided on models intended for non-packaged food.



California Prop 65 Notice:

WARNING: The materials used in this product may contain chemicals known to the State of California to cause cancer and birth defects or other reproductive harm, For more information go to www.P65Warnings.ca.gov.

Form No. 95176
Rev. 12.18.2018