

# MagiKitch'n®

## Model NPG30, NPG60 SERIES Portable Outdoor Gas Grills

Project \_\_\_\_\_

Item No. \_\_\_\_\_

Quantity \_\_\_\_\_



NPG30 Shown with options

### APPLICATION

The NPG30, NPG60 outdoor catering Models offer outdoor grilling. Each model includes a 3/4" inlet at the front side of unit with a fixed regulator installed. All models are mounted on heavy duty legs with casters for easy mobility over the toughest terrain. The modular design makes the appliance transportable to any event location. Many options and accessories are available to tailor your grill to match your menu selection and operational needs at any event in various settings.

### STANDARD FEATURES & ACCESSORIES

- 3/4" Gas inlet with fixed gas regulator installed
- Manual Shut Off (Pilot Gas Supply)
- V-shaped stainless steel radiant for each burner
- Front removable water tubs
- Chrome cooking grid(s) 30" (76 cm) & 60" (152 cm)
- 1-1/4" Burners are 20,000 Btu energy output
- Aluminized steel construction, stainless steel front and service shelf
- Removable support base for easy transport
- Heavy duty steel legs with 6" swivel casters
- 8" (20.3 cm) stainless steel front service shelf
- Runner tube pilot system
- Pilot runner tube protection cover prevents clogging
- Individual burner controls for precision cooking

### MODELS

#### Model Size and Gas Btu/Hr Rate

- |                                |         |
|--------------------------------|---------|
| <input type="checkbox"/> NPG30 | 80Kbtu  |
| <input type="checkbox"/> NPG60 | 160Kbtu |

### OPTIONS & ACCESSORIES (AT ADDITIONAL COST)

- Heavy Duty Top Grids
- 15" (30" Models only)     30"
- Long Life Burner (11 Ga. 304 Stainless Steel)
- Hood(s) with Thermometer
- 15" (30" Models only)     30"     60"
- Slip on Service Shelves
- Side shelf                       Rear shelf
- Steamer Option
- 15" Steamer set               30" Steamer set
- Steamer Pan Set
- Half pan set                     Full pan set
- MagiGriddle
- 15" (30" Models only)     30"
- Propane Fuel Tank(s)
- 20 Lb. vertical                 40 Lb. Vertical
- Utility Handles
- Side mount (No side shelf)     Water Tub
- Additional Items:
- Top grid scraper (Heavy duty grids only)
- Water tub drain system
- Cutting Board
- All stainless steel construction
- Side 20Lb. tank holder(s)
- EZ Roll System (Large 14" wheels one end)
- Outdoor vinyl cover
- 30" & 60" Wind guard (Model Size Specific)
- Piezo Ignition System (standard on all SS models)
- Trim Kit Cater

### APPROVALS



Model NPG30, NPG60 Series Outdoor Gas Grills

MagiKitch'n • P.O. Box 501, Concord, NH 03302-0501 • 509 Route 3A, Bow, NH 03304

603-225-6684 • FAX: 603-225-8497 • [www.magikitch'n.com](http://www.magikitch'n.com)

L10-564 Rev 0 01/14 Printed in the USA



## Model NPG30, NPG60 Series Outdoor Gas Grills

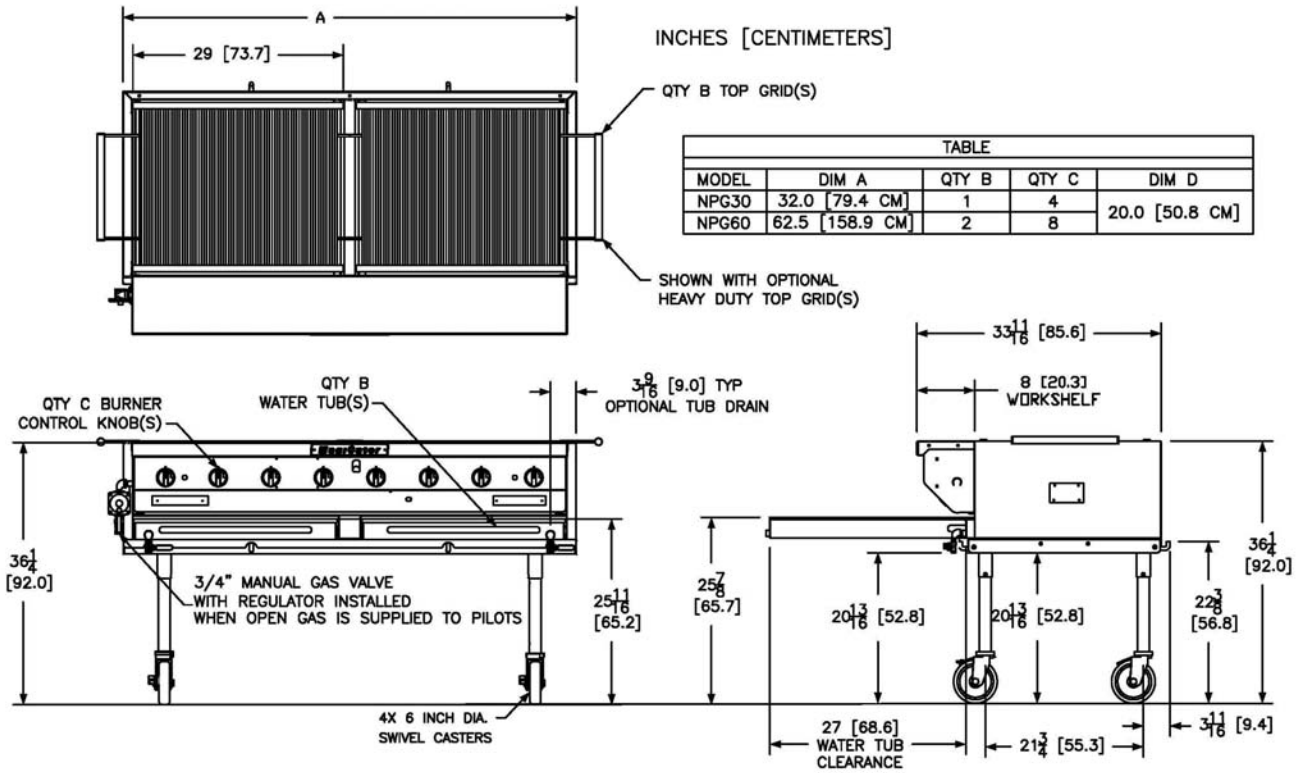


TABLE				
MODEL	DIM A	QTY B	QTY C	DIM D
NPG30	32.0 [79.4 CM]	1	4	20.0 [50.8 CM]
NPG60	62.5 [158.9 CM]	2	8	

INDIVIDUAL CHARBROILER SPECIFICATIONS				
Model Size	NPG30	NPG60		
Gas BTU/HR (kW)	80,000 (23.4)	160,000 (46.8)		
Burners	4	8		
Top Grid Cooking Area	696 in <sup>2</sup> (4,483 cm <sup>2</sup> )	1392 in <sup>2</sup> (8,967cm <sup>2</sup> )		
Water Tubs	1	2		
Top Grid(s)	29 x 24" (73.5 x 61.0 cm)	(2X) 29 x 24" (73.5 x 61.0 cm)		
SHIPPING INFORMATION (Approximate)				
Model Size	NPG30	NPG60		
Shipping	215 lbs. (98 kg)	288 lbs. (131 kg)		
Shipping Crate L x W x H	41" x 35" x 36" (114cm x 89cm x 91cm)	71" x 37" x 25" (180cm x 94cm x 64cm)		
Shipping Cube	29.9 ft <sup>3</sup> (0.9 m <sup>3</sup> )	38.0 ft <sup>3</sup> (1.1 m <sup>3</sup> )		
INSTALLATION INFORMATION				
GAS PRESSURE REQUIREMENTS		GAS CONNECTION REQUIREMENTS		
	LP Gas	NPG30	NPG60	
Supply Pressure*	11 - 13" W.C (27.4 mbars/ 2.74 kPa)	One (1) LP supply assembly includes: (1) 3/8" NPT regulator (5"-12" WC) (1) 3/8" NPT LP 2 stage regulator (1) 3/8" LP rated gas hose	Two (2) LP supply assembly includes: (1) 3/8" NPT regulator (5"-12" WC) (1) 3/8" NPT LP 2 stage regulator (1) 3/8" LP rated gas hose	
Burner Pressure	10" W.C. (25 mbars / 2.4 kPa)			
<b>IMPORTANT - This appliance is intended for outdoor use ONLY.</b>				
* This appliance is intended for use with LP gas bottles in accordance with NFPA regulations.				
CLEARANCES (Can Not Be Mounted W/O Supplied Casters)				
Front min	Floor min.	Non-Combustible material		Charbroiler Combustion Area
27" (68.6 cm)	21" (53.3 cm)	Sides min. 15" (38.1 cm)	Rear min. 8" (20.3 cm)	Do not block / restrict flue gases from venting from the appliance or operate under canopies.
SHORT FORM SPECIFICATION				
Provide MagiKitch'n model NPG30 or NPG60 radiant outdoor charbroiler mounted on heavy duty casters. Unit shall be gas heated and shall cook by means of gas burners. Unit shall be Aluminized steel construction, stainless steel front and service shelf. Provide with independent gas burners. Individual burner controls shall be mounted every 7-1/4 inches for flexible use. Convertible design allows operator to quickly add additional accessories with out the use of tools in most instances. Provide Options and Accessories as follows:				

