

MagiKitch'n®

Model NPG30, NPG60 SERIES Portable Outdoor Gas Grills

Project _____

Item No. _____

Quantity _____



NPG30 Shown with options

APPLICATION

The NPG30, NPG60 outdoor catering Models offer outdoor grilling. Each model includes a 3/4" inlet at the front side of unit with a fixed regulator installed. All models are mounted on heavy duty legs with casters for easy mobility over the toughest terrain. The modular design makes the appliance transportable to any event location. Many options and accessories are available to tailor your grill to match your menu selection and operational needs at any event in various settings.

STANDARD FEATURES & ACCESSORIES

- 3/4" Gas inlet with fixed gas regulator installed
- Manual Shut Off (Pilot Gas Supply)
- V-shaped stainless steel radiant for each burner
- Front removable water tubs
- Chrome cooking grid(s) 30" (76 cm) & 60" (152 cm)
- 1-1/4" Burners are 20,000 Btu energy output
- Aluminized steel construction, stainless steel front and service shelf
- Removable support base for easy transport
- Heavy duty steel legs with 6" swivel casters
- 8" (20.3 cm) stainless steel front service shelf
- Runner tube pilot system
- Pilot runner tube protection cover prevents clogging
- Individual burner controls for precision cooking

MODELS

Model Size and Gas Btu/Hr Rate

- NPG30 80Kbtu
- NPG60 160Kbtu

OPTIONS & ACCESSORIES (AT ADDITIONAL COST)

- Heavy Duty Top Grids
- 15" (30" Models only) 30"
- Long Life Burner (11 Ga. 304 Stainless Steel)
- Hood(s) with Thermometer
- 15" (30" Models only) 30" 60"
- Slip on Service Shelves
- Side shelf Rear shelf
- Steamer Option
- 15" Steamer set 30" Steamer set
- Steamer Pan Set
- Half pan set Full pan set
- MagiGriddle
- 15" (30" Models only) 30"
- Propane Fuel Tank(s)
- 20 Lb. vertical 40 Lb. Vertical
- Utility Handles
- Side mount (No side shelf) Water Tub
- Additional Items:
- Top grid scraper (Heavy duty grids only)
- Water tub drain system
- Cutting Board
- All stainless steel construction
- Side 20Lb. tank holder(s)
- EZ Roll System (Large 14" wheels one end)
- Outdoor vinyl cover
- 30" & 60" Wind guard (Model Size Specific)
- Piezo Ignition System (standard on all SS models)
- Trim Kit Cater

APPROVALS



Model NPG30, NPG60 Series Outdoor Gas Grills



MagiKitch'n • P.O. Box 501, Concord, NH 03302-0501 •
603-225-6684 • FAX: 603-225-8497 • www.magikitch'n.com

L10-564 Rev 3 03/16 Printed in the USA

Model NPG30, NPG60 Series Outdoor Gas Grills

Model NPG30, NPG60 Series Outdoor Gas Grills

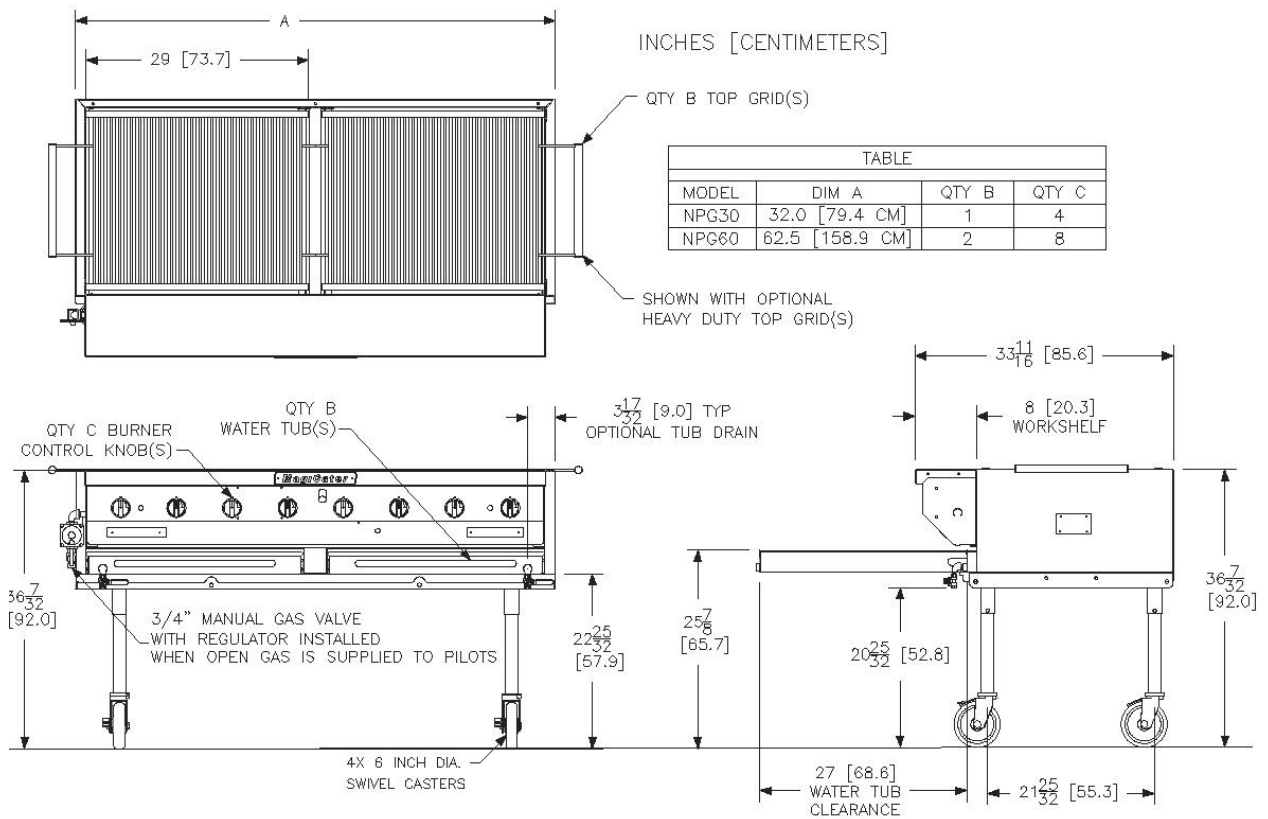


TABLE			
MODEL	DIM A	QTY B	QTY C
NPG30	32.0 [79.4 CM]	1	4
NPG60	62.5 [158.9 CM]	2	8

INDIVIDUAL CHARBROILER SPECIFICATIONS				
Model Size	NPG30		NPG60	
Gas BTU/HR (kW)	80000 (23.4)		160,000 (46.8)	
Burners	4		8	
Top Grid Cooking Area	696 in ² (4,483 cm ²)		1392 in ² (8,967cm ²)	
Water Tubs	1		2	
Top Grid(s)	29 x 24" (73.5 x 61.0 cm)		(2X) 29 x 24" (73.5 x 61.0 cm)	
SHIPPING INFORMATION (Approximate Weight and Shipping container may vary depending on options ordered)				
Model Size	NPG30		NPG60	
Shipping Weight	210 - 270 lbs. (95 - 122 kg)		400 - 440 lbs. (181 - 200 kg)	
Shipping Crate L x W x H	52" x 45" x 42" (132cm x 114cm x 106cm)		72" x 38" x 25" (183cm x 97cm x 64cm)	
Shipping Cube	56.9 ft ³ (1.6 m ³)		38.0 ft ³ (1.1 m ³)	
INSTALLATION INFORMATION				
GAS PRESSURE REQUIREMENTS			GAS CONNECTION REQUIREMENTS	
	LP Gas	NAT Gas	NPG30	NPG60
Supply Pressure*	11 - 13" W.C (27.4 mbars/ 2.74 kPa)	7" W.C (17.4 mbars/1.74 kPa)	One (1) supply assembly includes: (1) 3/4" NPT regulator (1) 3/4" NPT 2 stage regulator (1) 3/4" rated gas hose	Two (2) supply assembly includes: (1) 3/4" NPT regulator (1) 3/4" NPT 2 stage regulator (1) 3/4" rated gas hose
Burner Pressure	10" W.C. (25 mbars / 2.4 kPa)	4" WC (10 mbars / 1 kPa)		
IMPORTANT- This appliance is intended for outdoor use ONLY.				
* This appliance is intended for use with LP gas bottles in accordance with NFPA regulations.				
CLEARANCES (Can Not Be Mounted W/O Supplied Casters)				
Front min	Floor min.	Non-Combustible material		Charbroiler Combustion Area
27" (68.6 cm)	21" (53.3 cm)	Sides min.	Rear min.	Do not block / restrict flue gases from venting from the appliance or operate under canopies.
		15" (38.1 cm)	8" (20.3 cm)	
SHORT FORM SPECIFICATION				
Provide MagiKitch'n model NPG30 or NPG60 radiant outdoor charbroiler mounted on heavy duty casters. Unit shall be gas heated and shall cook by means of gas burners. Unit shall be Aluminized steel construction, stainless steel front and service shelf. Provide with independent gas burners. Individual burner controls shall be mounted every 7-1/4 inches for flexible use. Convertible design allows operator to quickly add additional accessories with out the use of tools in most instances. Provide Options and Accessories as follows:				



MagiKitch'n • P.O. Box 501, Concord, NH 03302-0501 •

603 -225-6684 • FAX: 603-225-8497 • www.magikitch'n.com L10-564 Rev 3 03/16 Printed in the USA

We reserve the right to change specifications without notice and without incurring any obligation for equipment previously or subsequently sold.