



"Your Solutions Partner"

# Specifications

F.O.B Sedalia, Missouri 65301



304-25PG  
Shown with optional shelf and cutting board

### OPTIONS:

- Gas thermostats - A-TH
- Safety pilots - A-SP
- Stainless steel liner - AMOD-SS-LINER
- Serving shelves w/glass protector panels - A956-460 - x
- Self Service Canopies - TS530-xx, TS530-xx-1SN
- Buffet shelves - A83x
- Glass display shelves - A98x
- Adapter panels - A31, A32, A33
- Telescope and flat covers - 546, 548
- Spillage Pans - 576, 676
- Insets - 521 thru 524
- Stainless steel carving boards - A442-xS/A445-xS
- Wood carving boards - A442-xW/A445-xW
- Solid tray slides - SOLID - FX/HD
- 3 bar trayslides - A3BTS-FX/HD
- Kick plates
- Stainless steel dish shelf - A441-xS
- Drop brackets on tray slide - AHD-BRKT-3BTS
- Drop brackets on carving board - AHD-BRKT-CB
- Stainless steel dish shelf - A441-xS
- Omit bottom shelf
- Tier of stainless steel angle sides
- Veneered plastic laminate panels on body
- Special powder coat painted body

### AGENCY LISTINGS:



**DUKE MANUFACTURING CO.**

2305 N. Broadway  
St. Louis, MO 63102

800.735.3853 Toll Free  
314-231-1130 In Missouri  
314.231.5074 Fax  
www.dukemfg.com

### Approval Stamp(s):

### PRODUCT INFORMATION:

PROJECT: \_\_\_\_\_  
ITEM: \_\_\_\_\_  
QUANTITY: \_\_\_\_\_

### MODEL:

### AeroServ Serving Systems Hot Food Units - Gas

- 302-25 32"L - 2 top openings
- 303-25 46"L - 3 top openings
- 304-25 60"L - 4 top openings
- 305-25 74"L - 5 top openings

### TOP:

- 20 gauge, 300 Series stainless steel
- Die stamped openings - 12" x 20"

### HEAT COMPARTMENTS:

- Heavy gauge galvanized steel - 8" deep
- Insulated on all four sides and bottom with fiberglass
- Controlled by adjustable manual gas valve with adjustable pilot light
- Galvanized radiation plate in each compartment
- Gas pressure regulator for each unit

### BODY:

- Paint grip or stainless steel
- Choice of (12) powder coat paint colors (must choose one)
  - #217105 - Designer White
  - #217103 - Natural Almond
  - #217150 - Orange
  - #217154 - Racing Red
  - #217107 - Hollyberry Red
  - #217120 - Sky Blue
  - #217127 - Fence Green
  - #217152 - Stone Gray
  - #217102 - Silver Hammer
  - #217113 - Brown Kickplate
  - #217101 - Semi-Gloss Black
  - #217125 - Textured Black
- Flanged or channeled edges
- Welded together with local reinforcements
- Mounted on 6" stainless steel legs with adjustable feet

### SHORT FORM SPECIFICATIONS:

**Duke AeroServ Serving Systems - Hot Food Units - Gas** . Top shall be constructed of 20 gauge, 300 Series stainless steel. Edges on all sides and ends to be flanged down 2" against body. Top of unit shall have die-stamped beaded openings, each 12' x 20". Body and shelves shall be formed of powder coated paint grip steel with powder coat paint or stainless steel, with integrally flanged or channeled edges for rigidity and structural strength. Each body individually welded together with local reinforcements as required. Each burner rated up to 2500 BTU, controlled by an adjustable gas valve with adjustable pilot light. Galvanized steel radiation plate furnished in each heat compartment, with gas pressure regulator provided with each unit to eliminate varying flame height. Manual valves supplied as standard. 6" polished stainless steel legs to be furnished. Must add "PG" to model number for Paint Grip Bodies, "SS" for Stainless steel bodies. NOT AVAILABLE ON CASTERS

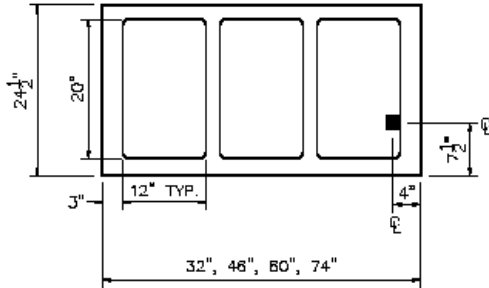
• DOORS NOT AVAILABLE • SPECIFY NATURAL OR PROPANE



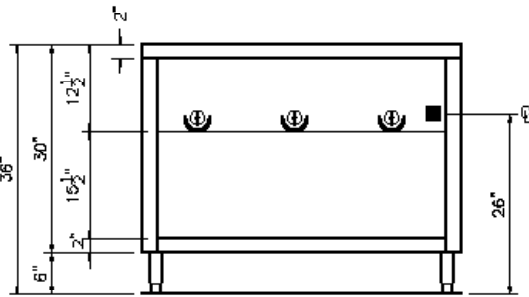
**AEROSERV SERVING SYSTEMS**

**Hot Food Units - Gas**

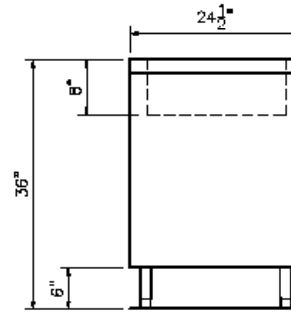
- 302-25 32"L - 2 top openings
- 303-25 46"L - 3 top openings
- 304-25 60"L - 4 top openings
- 305-25 74"L - 5 top openings



**TOP VIEW**



**FRONT VIEW**



**RIGHT SIDE VIEW**

LEGEND	
■	- GAS CONNECTION

**DIMENSIONS:**

FREIGHT CLASS: 150

Model	Depth		Width		Height		Top Openings	Cube ft. crated	Weight	
	in	cm	in.	cm	in.	cm			lbs	kg
302-25	32	81.3	24-1/2	62.2	36	91.4	2	27.6	220	110.0
303-25	46	116.8	24-1/2	62.2	36	91.4	3	37.7	284	129.1
304-25	60	152.4	24-1/2	62.2	36	91.4	4	47.9	349	158.6
305-25	74	188.0	24-1/2	62.2	36	91.4	5	58.1	419	190.5

**POWER SUPPLY:** High altitude orifice available - specify elevation. No combustible materials should be stored on bottom shelf.

Model	# Burners	Total BTU
302-25	2	5,000
303-25	3	7,500
304-25	4	10,000
305-25	5	12,500

SPECIFY NATURAL OR PROPANE

**DUKE MANUFACTURING CO.**  
 2305 N. Broadway  
 St. Louis, MO 63102



800.735.3853 Toll Free  
 314.231.5074 Fax  
 www.dukemfg.com

**"Your Solutions Partner"**

Specification subject to change

10/08  
 Printed in U.S.A  
 © 2008, Duke Manufacturing Co.