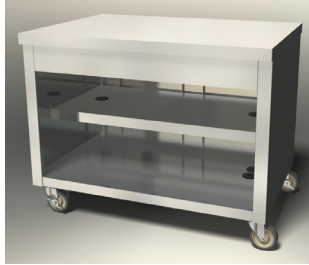




Your Solutions Partner

# Specifications

F.O.B Sedalia, Missouri 65301



TST-46

### OPTIONS:

- 14 gauge tops
- Internal Locking device
- Pass-Thru construction
- Foodshields
- Workshelves
- Trayslides
- Special length not listed
- Recessed top (to accommodate griddles, fryers, etc.)
- 6" Stainless steel legs
- Veneered plastic laminate panels on body
- Powder coat paint colors
- Kickplates s/s or p/g

### AGENCY LISTING:



**DUKE MANUFACTURING CO.**  
 2305 N. Broadway  
 St. Louis, MO 63102

800.735.3853 Toll Free  
 314.231.1130 In Missouri  
 314.231.5074 Fax  
 www.dukemfg.com

### Approval Stamp(s):

### PRODUCT INFORMATION:

PROJECT: \_\_\_\_\_  
 ITEM: \_\_\_\_\_  
 QUANTITY: \_\_\_\_\_

### MODEL:

### Thurmaduke Serving Systems - Solid Top Units

- TST-18** 18" length units
- TST-32** 32" length units
- TST-46** 46" length units
- TST-60** 60" length units
- TST-74** 74" length units
- TST-88** 88" length units

### TOP:

- 16 gauge, 300 Series stainless steel
- Sound-deadening

### BODY:

- Choice of (12) powder coat paint colors (must choose one):
  - #217105 - Designer White
  - #217150 - Orange Red
  - #217107 - Hollyberry Red
  - #217127 - Fence Green
  - #217102 - Duke Silver
  - #217101 - Semi-Gloss Black
  - #217103 - Natural Almond
  - #217154 - Racing Red
  - #217120 - Sky Blue
  - #217152 - Stone Gray
  - #217113 - Brown Kickplate
  - #217125 - Textured Black
- Stainless steel body
- NSF approved 5" diameter polyurethane casters
- Operator's side open to bottom shelf
- 7" high stainless steel rail on operator's side
- End and side opposite operator fully enclosed
- Intermediate and bottom shelves to match body

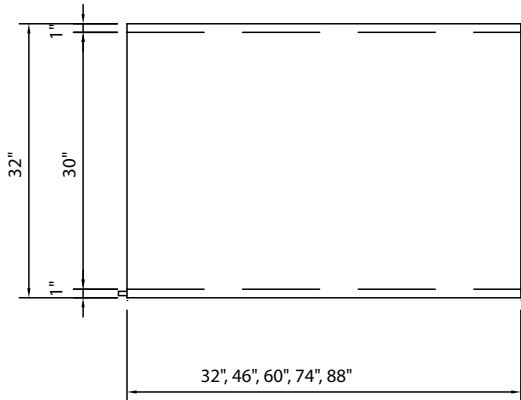
### SHORT FORM SPECIFICATIONS:

**Thurmaduke Serving Systems - Solid Top Units.** Top shall be 16ga, 300 series Stainless Steel flanged down edges, flush at ends, 20ga s/s body & under shelves with 9-1/2" clearance between, 5" dia. NSF approved swivel casters, 2 w/ locks.

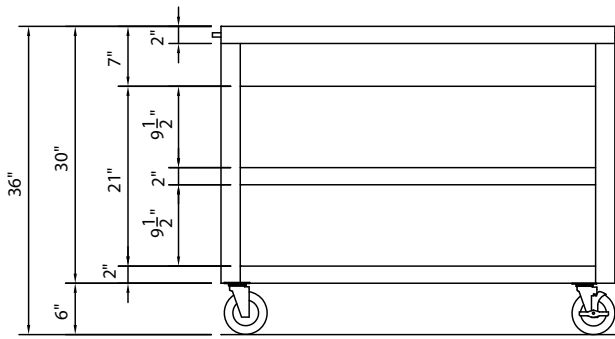
# Thurmaduke®

## THURMADUKE SERVING SYSTEMS SOLID TOP UNITS

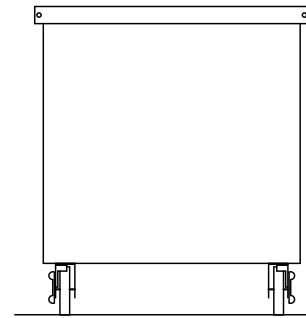
- TST-18** 18" lengths units
- TST-32** 32" lengths units
- TST-46** 46" lengths units
- TST-60** 60" lengths units
- TST-74** 74" lengths units
- TST-88** 88" lengths units



**TOP VIEW**



**FRONT VIEW**



**RIGHT SIDE VIEW**

**DIMENSIONS:**

Freight Class: 150

Model	Length		Width		Height		Cube ft. crated	Weight	
	in.	cm	in.	cm	in.	cm		lbs.	kg
<b>TST-18</b>	18	45.7	32	81.3	36	91.4	22.0	200	90.9
<b>TST-32</b>	32	81.3	32	81.3	36	91.4	34.8	215	97.7
<b>TST-46</b>	46	116.8	32	81.3	36	91.4	47.7	314	142.7
<b>TST-60</b>	60	152.4	32	81.3	36	91.4	60.5	380	172.7
<b>TST-74</b>	74	188.0	32	81.3	36	91.4	73.3	446	202.7
<b>TST-88</b>	88	223.5	32	81.3	36	91.4	86.2	480	218.2



**DUKE MANUFACTURING CO.**

2305 N. Broadway  
St. Louis, MO 63102

800.735.3853 Toll Free  
800.231.1130 In Missouri  
314.231.5074 Fax  
[www.dukemfg.com](http://www.dukemfg.com)

Specification subject to change