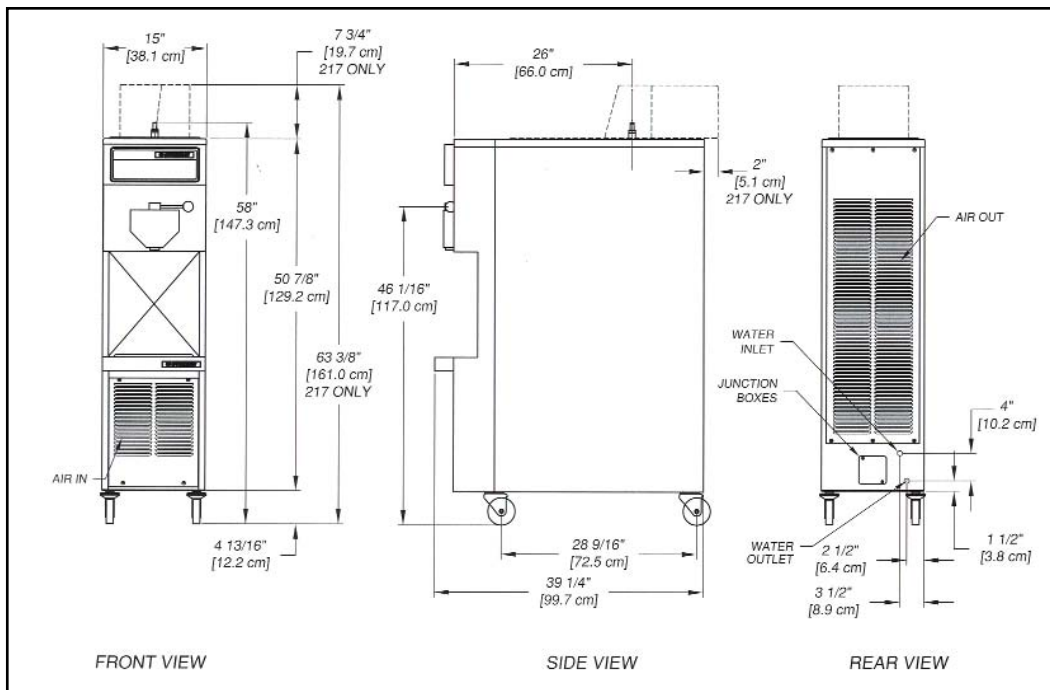


SINGLE FLAVOR SOFT SERVE PRESSURIZED FREEZERS



- High production capacity with a 14,000 BTU/hr compressor and 2 HP drive motor
- Low portion costs
- Long wearing, self-sharpening auger flights gently fold product
- Ideally suited for high volume operations, such as fast food locations, drive-ins, theme parks, institutions, and recreational facilities.
- Model 217 built-in mix pump or 217R remote pump assures firm, delicious, and profitable soft serve product with consistent overrun even under the most demanding conditions.
- Includes: casters, caster extensions, spare parts kit, forced refrigeration switch, and clean timer

 **STOELTING®**
Since 1905



SPECIFICATIONS	MODEL 217		MODEL 217R	
DIMENSIONS	FREEZER	WITH CRATE	FREEZER	WITH CRATE
Depth	39 1/4" (99.5 cm)	51" (129.5 cm)	39 1/4" (99.5 cm)	51" (129.5 cm)
Width	15" (38 cm)	25" (63.5 cm)	15" (38 cm)	25" (63.5 cm)
Height	63 3/8" (161 cm)	67" (170 cm)	55 11/16" (141.4 cm)	67" (170 cm)
WEIGHT	FREEZER	WITH CRATE	FREEZER	WITH CRATE
	415 lbs. (188 kg)	525 lbs. (236.3 kg)	385 lbs. (174.6 kg)	495 lbs. (224.5 kg)
ELECTRICAL	1 phase, 208/230 volt, minimum circuit ampacity 27 amps. 35 amp maximum fuse or HACR type circuit breaker or 40 amp circuit breaker size.		3 phase, 208/230 volt, minimum circuit ampacity 26 amps. 35 amp maximum fuse or HACR type circuit breaker or 40 amp circuit breaker size.	
REFRIGERANT	R404A			
COMPRESSOR	14,000 B.T.U.H./hr.			
DRIVE MOTOR	2 H.P.			
COOLING	Air or water cooled units available.			
AIR FLOW	Front to back air flow. Air cooled units require 6" (16 cm.) clearance front and back.			
PLUMBING FITTINGS	Water cooled requires 3/8" N.P.T. water and drain fittings.			
HOPPER SIZE	6.5 gallons (24.7 liters)		N.A.	
BARREL SIZE	1 gal.		1 gal.	
OPTIONS/ACCESSORIES	Cup dispensers; air cooled remote condenser		Model 219 or U3-02 Remote Mix Pump; cup dispensers; air cooled remote condenser	
WARRANTY	One-year parts and labor warranty; five year warranty on compressor, evaporator/hopper assembly, drive motor, speed reducers, auger shaft, and auger flights (against breakage).			

Continuous research leads to ongoing product improvements; therefore, these specifications are subject to change without notice.

Distributed by:



502 Highway 67 • Kiel, WI 53042-1600
 920-894-2293 • 800-558-5807
 Fax: 920-894-7029
 E-mail: commercial@stoelting.com
 Internet: www.stoelting.com

Certified, Listed and/or
 Recognized by:

