



Creative Servingware Solutions in Melamine and Alternative Materials

www.get-melamine.com | 713.467.9394

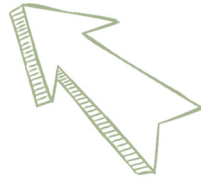
# Eco-Friendly High Chairs

Plantation grown sustainable rubberwood

vs.

finger boarded

Two straps for added safety



Bottom brace added for stability

“Screwed and Glued” construction

vs.

“pressed threaded sleeve”  
that causes loosening



# Creative Servingware Solutions in Melamine and Alternative Materials

www.get-melamine.com | 713.467.9394



HC-100-W

*High back support for extra security  
Parte posterior más alta para seguridad*



HC-100-N

*Curved leg rest for extra comfort  
Curva para apoyar piernas para mayor comodidad*



HC-100-M

Colors | Colores: M N W

- HC-100-1** High Chair, Assembled, 1 ea./case  
Silla Alta para Niño, Armada, empaque 1 pieza
- HC-100-2** High Chair, Assembled, 2 ea./case  
Silla Alta para Niño, Armada, empaque 2 piezas
- HC-100-P** High Chair, Assembled, Palletized, Not in Box, 28 ea./pallet  
Silla Alta para Niño, Armada, Paletizada, Sin Caja empaque 28 piezas
- HC-100-KD** High Chair, Assembly Required, 1 ea./case  
Silla Alta para Niño, Se Requiere Armado, empaque 1 pieza



Creative Servingware Solutions in Melamine and Alternative Materials

www.get-melamine.com | 713.467.9394

HC-101C high chair is specially constructed to meet the **European Safety Standard**

Silla alta para niño HC-101C está conformada a los **Estándares Europeos de Seguridad**



HC-101-C



**STRAPS**

Replacement Straps for High Chair, Brown, 1 ea./case  
Correa de Re-emplazo para Silla, Color Café, empaque 1 pieza

Colors | Colores: **C**

**HC-101C-KD** High Chair, Assembly Required, 1 ea./case  
Silla Alta para Niño, Se Requiere Armado, empaque 1 pieza

**HC-101C-P** High Chair, Assembled, Palletized, not in box, 28 ea./pallet  
Silla Alta para Niño, Armada, Paletizada, Sin Caja empaque 28 piezas

*For the safety of the child,  
DO NOT TURN CHAIR UPSIDE DOWN  
to fit infant carrier.*

*Para seguridad del Niño,  
NO VOLTEAR LA SILLA AL REVES  
para poner porta-bebe.*

