

**G****FULLY JACKETED GAS  
TILTING KETTLE**

JOB NAME: \_\_\_\_\_

ITEM NO.: \_\_\_\_\_

NO. REQUIRED: \_\_\_\_\_

**MODEL**

- FT-40GLF - 40 gallon (152 liter), fully jacketed gas tilting kettle

**DESCRIPTION**

The kettle has double-wall construction of 300 series stainless steel forming a full steam jacket around the kettle. The jacket enclosure contains factory sealed water and antifreeze. The kettle exterior is fully insulated. The bottom of the kettle is a hemispherical design for superior heat circulation. The recessed control panel is located on the front right side of the unit in full view of the operator. Standard controls include direct immersion thermostat, water sight glass, cooking light, pressure gauge and electronic ignition with ignition indicator light. Safety features include low water cutoff with indicator light, pressure switch, pressure relief valve and a 100% safety gas shut off valve.

The kettle pivots on trunnions connected to the gear and control consoles. The worm and gear tilting mechanism allows the kettle to tilt forward to a full 90° for complete draining. The tilt mechanism is self locking for positive stop action. The consoles are drip proof, stainless steel clad and are supported on all welded 1 5/8" (41mm) diameter stainless steel legs with flanged feet.

The kettle construction is stainless steel throughout and built in accordance with the ASME code.

MODEL	Input BTU/Hour	Combustion Efficiency
FT-40GLF	120,000	75% Minimum

**OPERATION WILL BE BY**

Natural or L.P. gas utilizing a high efficiency power burner system. The steam kettle is A.S.M.E. code stamped for operation to 50 PSI. Temperature range from 150° F to 285°F.

The controls shall be equipped for operation on 120 VAC, 1pH, 50/60 Hz.

The kettle shall be equipped for operation on 220V, 50Hz, 1pH or for sure on 220 to 240V supply unit. Total Max Amps: 1.0

**SHIPPING WEIGHT**

- FT-40GLF - 1100 lbs (499 kg)

**OPTIONS & ACCESSORIES**

(at additional charge)

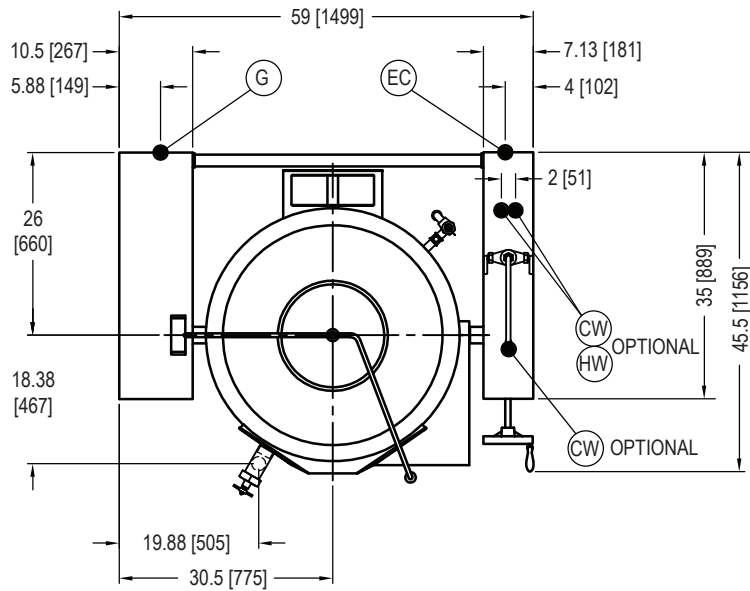
- **Pantry Faucet**
  - 18" Single pantry faucet with swing spout
  - 18" Double pantry faucet with swing spout
- **Tangent Draw-Off**
  - 2" tangent draw off, FDOR-2 with strainer
  - 3" tangent draw off, FDOR-3 with strainer
- Spring assist cover, HSC
- Tri-Basket assembly
- Graduated measuring strip, MS-1
- Solid disk strainer DOS-2
- 316 stainless steel liner for high acid content products
- Etched Gallon Markings

**FOOD SERVICE EQUIPMENT**  
Full Jacketed Tilting Kettle
**MARKET FORGE**

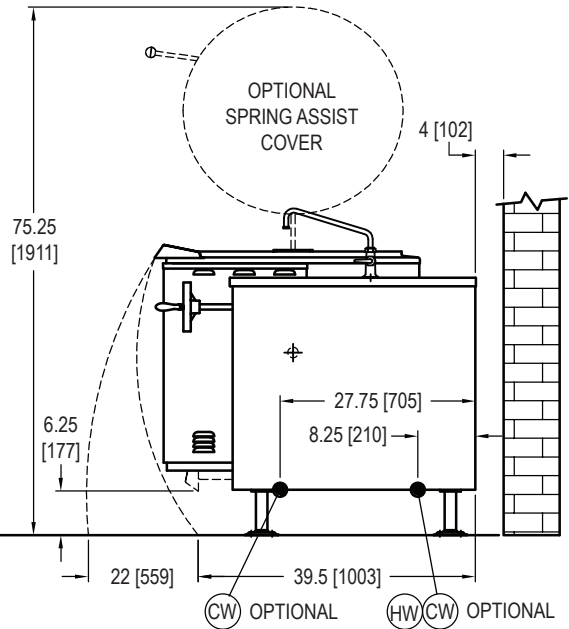
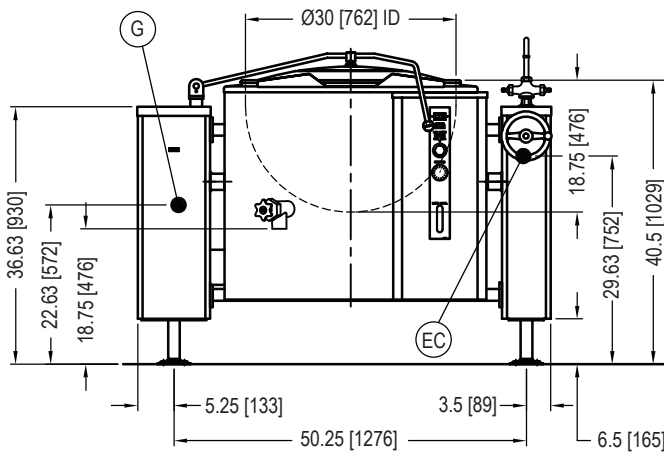
**G****FULLY JACKETED GAS  
TILTING KETTLE**

DETAILS &amp; DIMENSIONS

DIMENSIONS ARE IN INCHES [MM]



**FLANGED FOOT DETAIL**  
 Ø4 EQUALLY SPACED  
 7/16 [11] HOLES  
 ON 3 [75] B.C.

**SERVICE CONNECTIONS**

<b>EC</b>	<b>Electrical Connection</b> - 120V, 60Hz, 1pH with grounding wire, unless other wise specified. Includes a 6 foot and 3 prong plug. Total Max Amps: 4.0
<b>G</b>	<b>Gas Connection</b> - 3/4" (19mm) N.P.T. a gas shut-off valve must be installed in supply piping convenient and adjacent to unit.
<b>CW</b>	<b>Cold Water</b> - 3/8" (10mm) O.D. tubing to optional faucet.
<b>HW</b>	<b>Hot Water</b> - 3/8" (10mm) O.D. tubing to optional faucet.

- BTU/Hour: 120,000
- kW/Hour: 35.2
- Gas Supply (Supply Pipe Pressure W.C.)
  - Natural 6"-14" (152-356mm)
  - Propane 11"-14" (279-356mm)
- Minimum Clearance (Sides & Back) :
  - 4" (102mm)

The manufacturer reserves the right to modify materials and specifications without notice.

FOOD SERVICE EQUIPMENT  
Full Jacketed Tilting KettlePRINTED IN U. S. A.  
SPEC SHEET: 14-0221 Rev B (2/16)

**MARKET FORGE**Tel: (802) 658-6600 • Fax: (802) 864-0183 • [www.marketforge.com](http://www.marketforge.com)