

NOVA™ FREEZERS



PROJECT:

ITEM NUMBER:

MODEL NUMBER:

1, 2 & 3 DOOR FREEZERS

SPECIFICATIONS FOR: NF241, NF522 & NF803

- **Exterior Finish:** Exterior front, sides and doors are stainless steel. The exterior top, bottom and back are galvanized steel. All exterior joints and seams fold in without lap joints. No exposed raw edges.
- **Interior Finish:** Interior liner and interior door panel are stainless steel.
- **Insulation:** The complete cabinet and door(s) are foamed-in-place with polyurethane foam insulation.
- **Hardware:** Heavy duty, pivot hinges; centered key locks; horizontal work flow pull handles; self adjusting magnetic gaskets; 4" diameter casters (four casters on one and two door models and six casters on three door model). 3 epoxy coated shelves per door section - standard.
- **Electrical:** All models are standard with complete perimeter, anti-condensate door opening heater wires. An interior LED light is activated by a switch for each door.
- **Instrumentation:** Microprocessor with digital display and Hi/Lo audio/visual alarm
- **Refrigeration:** Complete top mounted refrigeration system with a copper tube, aluminum fin evaporator. The condensate is collected and automatically evaporated from a hot gas evaporator pan increasing the efficiency of the system. Refrigerant flow is controlled by a thermostatic expansion valve. R-404a refrigerant. Operating temperature: 0°F.
- **Approvals:** UL, C-UL and UL Sanitation listed**
 ENERGY STAR® listed
 CEC (California Energy Commission) certified

STANDARD FEATURES

- Air-cooled condensing unit
- Automatic condensate evaporation
- Automatic defrost
- Casters
- Door opening heaters
- Epoxy coated shelves
- Expansion valve system
- Field reversible doors
- Horizontal work flow handle
- Key locks
- Magnetic gasketing
- Microprocessor with digital display
- Operating temperature: 0°F
- Polyurethane insulation
- Hi/Lo audio and visual alarms
- R-404a refrigerant
- Recessed interior LED light
- Stainless steel exterior
- Stainless steel interior
- Stocked for same day shipment
- Approvals: UL, C-UL & UL Sanitation** and ENERGY STAR® listed, CEC certified
- Warranties: 3 year parts and labor, 5 year compressor

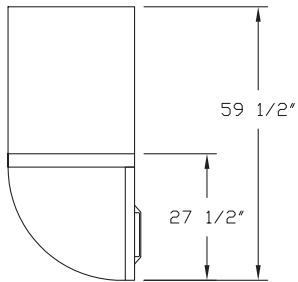
OPTIONAL FEATURES*

- Extra shelves
- Half solid doors
- Legs in lieu casters
- Pan slides
- Remote system available
- Stainless steel backs
- Stainless steel shelves
- 220/50/1 for export

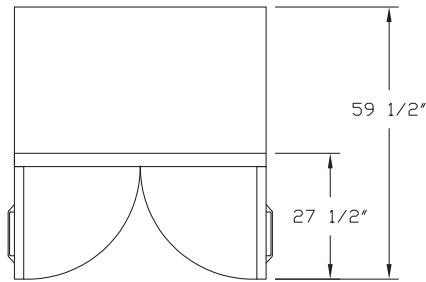


Nor-Lake, Inc.
 Registered to ISO 9001:2008
 File No. 10001816

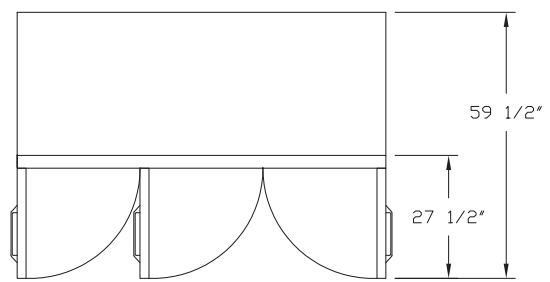
* Most options are available two weeks from receipt of order. Please contact us for specific questions.
 **C-UL is Underwriters Laboratories Safety Certification Mark which indicates that UL has tested the equipment to applicable CSA Standards.
 **UL Sanitation is Underwriters Laboratories Sanitation Mark which indicates that UL has tested the equipment to applicable NSF Standards.



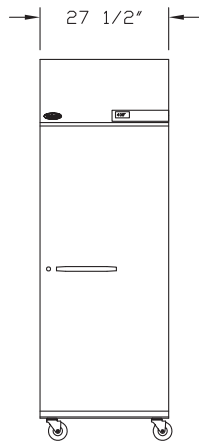
NF241
TOP VIEW



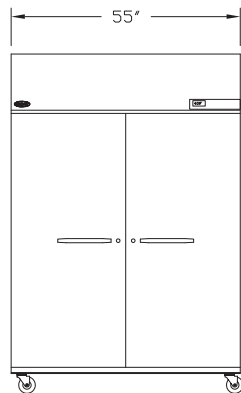
NF522
TOP VIEW



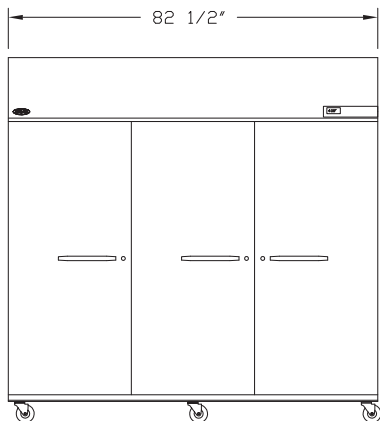
NF803
TOP VIEW



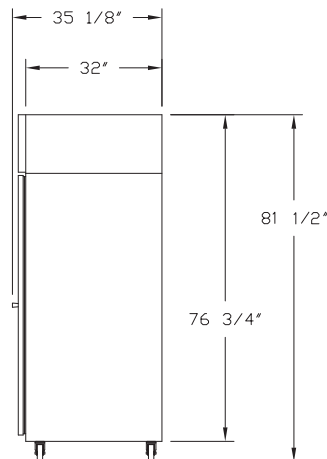
NF241
FRONT VIEW



NF522
FRONT VIEW



NF803
FRONT VIEW



SIDE VIEW

SPECIFICATIONS

Models	NF241	NF522	NF803
<i>Crated Weight (lbs) (kg)</i>	375 (169)	660 (297)	805 (362)
<i>Crated Height (in) (cm)</i>	81 (203)	81 (203)	81 (203)
<i>Crated Width (in) (cm)</i>	37 (94)	58 (146)	86 (215)
<i>Crated Depth (in) (cm)</i>	41 (104)	41 (104)	41 (104)
<i>Interior Height (in) (cm)</i>	59 (148)	59 (148)	59 (148)
<i>Interior Width (in) (cm)</i>	23-1/2 (59)	51 (128)	78-1/2 (196)
<i>Interior Depth (in) (cm)</i>	30 (75)	30 (75)	30 (75)
<i>Overall Height (in) (cm) *</i>	81-1/2 (204)	81-1/2 (204)	81-1/2 (204)
<i>Overall Width (in) (cm)</i>	27-1/2 (69)	55 (138)	82-1/2 (206)
<i>Overall Depth (in) (cm)</i>	35-1/8 (88)	35-1/8 (88)	35-1/8 (88)
<i>Gross Cubage (CuFt) (L)</i>	24.0 (679)	51.9 (1469)	79.9 (2261)
<i>Shelf Area (SqFt) (Sqm)</i>	12.8 (1.17)	28.6 (2.63)	42.9 (3.94)
<i>Number of Shelves</i>	3	6	9
<i>Number of Casters</i>	4	4	6
<i>Number of Legs (Optional)</i>	4	4	6
<i>Condensing Unit Size</i>	1/2 HP	3/4 HP	1 HP
<i>Refrigerant</i>	R-404a	R-404a	R-404a
<i>Electrical Characteristics</i>	115/60/1	115/60/1	115/60/1
<i>Cord and Plug Furnished</i>	Yes	Yes	Yes
<i>Nema Plug Configuration</i>	5-15P	5-20P	5-20P
<i>Total Amp Draw</i>	9.7	13.7	13.8

*The overall heights shown in the table and drawings are with casters. With optional 6" legs, the overall height is 82-3/4 inches (207 cm).

Specifications subject to change without notice.



Revision Date: 08/13
© 2013 NOR-LAKE, INC.
Printed in the U.S.A.
Part Number: 040342