



NOR-LAKE, INCORPORATED  
727 Second Street  
Hudson, Wisconsin 54016

800-955-5253  
715-386-2323  
866-961-5253 Parts  
800-388-5253 Service  
715-386-6149 FAX  
www.norlake.com

## ADVANTEDGE™ SOLID DOOR BACK BAR REFRIGERATORS



NLBB69

PROJECT:

ITEM NUMBER:

MODEL NUMBER:

### SPECIFICATIONS FOR: NLBB59, NLBB69, NLBB79, NLBB95

- **Finish:** Heavy duty stainless steel top and black exterior front, sides and back. Galvanized steel interior walls with stainless steel floor.
- **Insulation:** Foamed-in-place 1-1/2" CFC-free polyurethane insulation
- **Hardware:** Solid doors with locks, magnetic door gaskets, plastic breaker strips around door openings to limit the formation of any condensation. Two adjustable shelves per door section standard. Interior LED light.
- **Electrical:** 115 volt, 60 Hz, 1 phase with cord and NEMA 5-15P plug
- **Refrigeration:** Self-contained forced air R-134a capillary tube refrigeration system. Temperature range from +34°F to +38°F. Adjustable temperature control.
- **Approvals:** ETL Sanitation listed, UL, C-UL Safety listed, approved to NSF standard for packaged food products \*\*

### STANDARD FEATURES

- Adjustable temperature control
- Black front, sides and back exterior
- Two adjustable shelves with clips per door section
- Free flowing air system at all times to ensure uniformly cooled product
- LED interior light
- Slide out condensing unit
- Temperature range: +34°F to +38°F
- ETL Sanitation listed, UL, C-UL Safety listed, approved to NSF standard for packaged food products \*\*
- Warranties: 3 year parts & labor, 5 year compressor

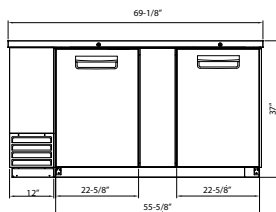
### OPTIONAL FEATURES\*

- 4" plate casters
- Floor racks
- Shelves with product guides

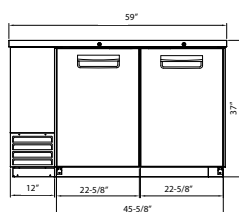
\*Most options are available one week from receipt of order. Please contact us for specific questions.

\*\* C-UL is Underwriters Laboratories Safety Certification Mark which indicates that UL has tested the equipment to applicable CSA Standards.

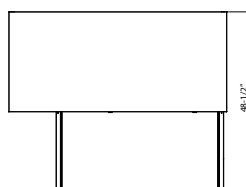
\*\* UL Sanitation is Underwriters Laboratories Sanitation Mark which indicates that UL has tested the equipment to applicable NSF Standards.



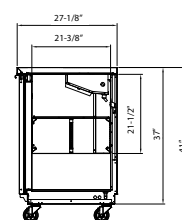
**FRONT**  
**NLBB69**



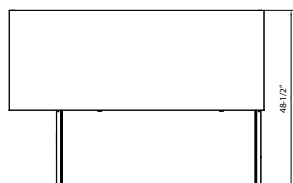
**FRONT**  
**NLBB59**



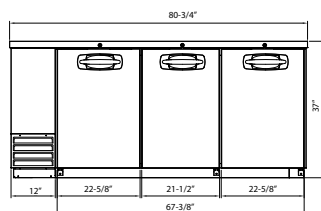
**TOP**  
**NLBB59**



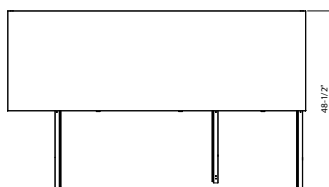
**SIDE**  
**ALL MODELS**



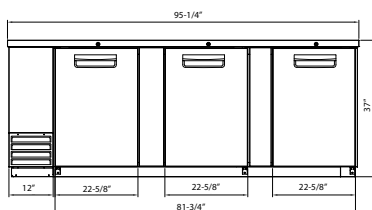
**TOP**  
**NLBB69**



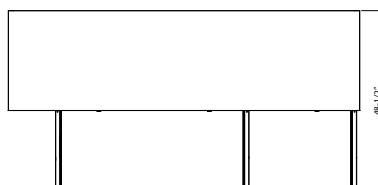
**FRONT**  
**NLBB79**



**TOP**  
**NLBB79**



**FRONT**  
**NLBB95**



**TOP**  
**NLBB95**

## SPECIFICATIONS

Models	NLBB59	NLBB69	NLBB79	NLBB95
Crated Weight (lbs) (kg)	276 (125)	298 (135)	400 (182)	460 (209)
Crated Height (in) (cm)	43-1/2 (111)	43-1/2 (111)	43-1/2 (111)	43-1/2 (111)
Crated Width (in) (cm)	61-1/2 (156)	71-1/4 (181)	82-5/8 (210)	97-5/8 (248)
Crated Depth (in) (cm)	30 (76)	30 (76)	30 (76)	30 (76)
Interior Height (in) (cm)	32 (81)	32 (81)	32 (81)	32 (81)
Interior Width (in) (cm)	54-3/4 (139)	64-3/4 (165)	76-1/2 (194)	91 (231)
Interior Depth (in) (cm)	21-1/2 (55)	21-1/2 (55)	21-1/2 (55)	21-1/2 (55)
Overall Height (in) (cm)	37 (94)	37 (94)	37 (94)	37 (94)
Overall Width (in) (cm)	59 (150)	69-1/8 (176)	80-3/4 (205)	95-1/4 (242)
Overall Depth (in) (cm)	29-5/8 (75)	29-5/8 (75)	29-5/8 (75)	29-5/8 (75)
Gross Cubage (CuFt) (L)	19.4 (549)	23.4 (663)	27.9 (790)	33.6 (951)
Number of Shelves	4	4	6	6
Shelf Area (SqFt) (Sqm)	14.1 (1.31)	16.9 (1.57)	19.8 (1.84)	22.6 (2.1)
Condensing Unit Size	1/5 HP	1/3 HP	1/3 HP	3/8 HP
Refrigerant	R-134a	R-134a	R-134a	R-134a
Electrical Characteristics	115/60/1	115/60/1	115/60/1	115/60/1
Cord and Plug Furnished	Yes	Yes	Yes	Yes
NEMA Plug Configuration	5-15P	5-15P	5-15P	5-15P
Total Amp Draw	3.3	5.0	6.0	6.3
12 oz. Can Capacity	1084	1299	1566	1875
12 oz. Bottle Capacity	498	594	714	858

Specifications subject to change without notice.



Revision Date: 4/18  
Part Number: 143584