



NOR-LAKE, INCORPORATED
727 Second Street
Hudson, Wisconsin 54016

800-955-5253
715-386-2323
866-961-5253 Parts
800-388-5253 Service
715-386-6149 FAX
www.norlake.com

ADVANTEDGE™ SANDWICH FOOD PREP REFRIGERATORS



STANDARD CONDENSER
FILTER IS REMOVABLE
WITHOUT TOOLS

NLSP48-12A

PROJECT:
.....
ITEM NUMBER:
.....
MODEL NUMBER:
.....

SANDWICH FOOD PREP REFRIGERATORS

SPECIFICATIONS FOR: NLSP27-8A, NLSP36-10A, NLSP48-12A, NLSP60-16A, NLSP72-18A

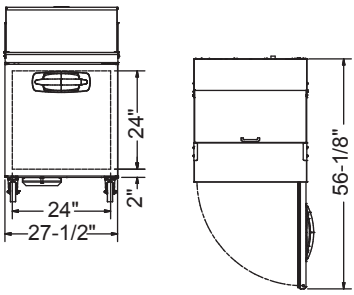
- **Finish:** Stainless steel interior and exterior
- **Insulation:** Complete cabinet and doors are foamed-in-place with polyurethane insulation, insulated pan covers.
- **Hardware:** Curved handle with recessed pocket with one shelf per door, 6" overall height casters standard, front-breathing design allows for zero-clearance installation on sides and back.
- **Electrical:** 115 volt, 60 Hz, 1 phase with cord and plug
- **Refrigeration:** Self-contained forced air refrigeration system. The condensate is collected and automatically evaporated from an energy efficient vaporizer. Refrigerant flow is controlled by a capillary tube. R290 refrigerant. Temperature range: +34°F to +38°F for storage area, +33°F to +41°F for refrigerated pan well.
- **Accessories:** 1/6 size pans, locking pan adapter bars and 9-1/2" polyethylene cutting board included
- **Approvals:** UL, C-UL Safety and UL Sanitation listed **

STANDARD FEATURES

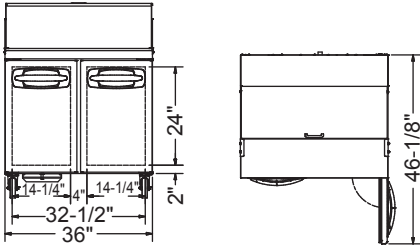
OPTIONAL FEATURES*

- | | | |
|--|---|---|
| <ul style="list-style-type: none"> ■ 1/6 size pans included in all models ■ Locking pan adapter bars ■ Air cooled condensing unit ■ Automatic condensate vaporizer ■ Automatic defrost ■ Capillary tube system ■ Casters ■ Cutting board ■ Field reversible door on NLSP27-8A | <ul style="list-style-type: none"> ■ Condenser filter ■ Magnetic gaskets ■ Self-closing doors ■ Stainless steel interior and exterior ■ UL, C-UL Safety and UL Sanitation listed ** ■ Warranties: 3 year parts & labor, 5 year compressor | <ul style="list-style-type: none"> ■ 6" legs in lieu of casters ■ 4" casters in lieu of standard casters ■ Stainless steel back ■ Additional shelves ■ Overshelf assemblies (single and double) ■ Flat lid models ■ Pull-out drawers |
|--|---|---|

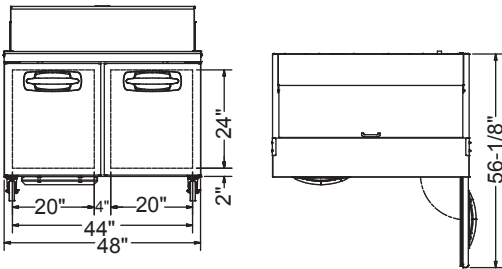
* Most options are available two weeks from receipt of order. Please contact us for specific questions.
** C-UL is Underwriters Laboratories Safety Certification Mark which indicates that UL has tested the equipment to applicable CSA Standards.
** UL Sanitation is Underwriters Laboratories Sanitation Mark which indicates that UL has tested the equipment to applicable NSF Standards..



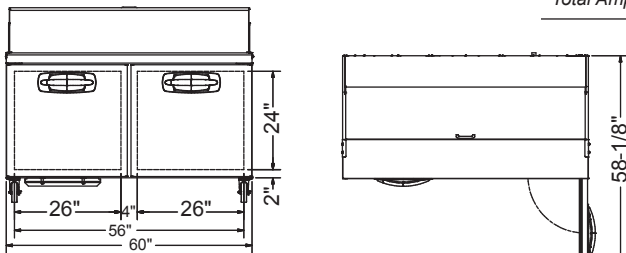
FRONT
NLSP27-8A



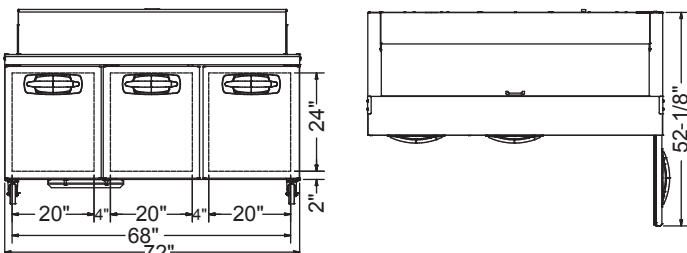
FRONT
NLSP36-10A



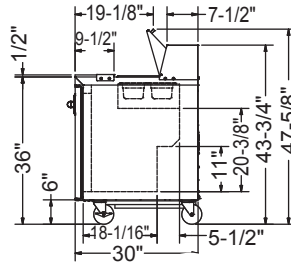
FRONT
NLSP48-12A



FRONT
NLSP60-16A



FRONT
NLSP72-18A



SIDE
ALL MODELS

SPECIFICATIONS

Models	NLSP27-8A	NLSP36-10A	NLSP48-12A	NLSP60-16A	NLSP72-18A
Crated Weight (lbs) (kg)	208 (94)	261 (118)	317 (144)	368 (167)	426 (193)
Crated Height (in) (cm)	46-3/4 (119)	46-3/4 (119)	46-3/4 (119)	46-3/4 (119)	46-3/4 (119)
Crated Width (in) (cm)	30-1/8 (75)	37-1/4 (95)	51-1/8 (130)	63 (160)	74-3/8 (189)
Crated Depth (in) (cm)	33-1/2 (85)	33-1/2 (85)	33-1/2 (85)	33-1/2 (85)	33-1/2 (85)
Interior Height (in) (cm)	20-3/8 (52)	20-3/8 (52)	20-3/8 (52)	20-3/8 (52)	20-3/8 (52)
Interior Width (in) (cm)	24 (61)	32-1/2 (82)	44 (112)	56 (142)	68 (172)
Interior Depth (in) (cm)	23 (58)	23 (58)	23 (58)	23 (58)	23 (58)
Overall Height (in) (cm)	43-3/4 (111)	43-3/4 (111)	43-3/4 (111)	43-3/4 (111)	43-3/4 (111)
Overall Width (in) (cm)	27-1/2 (70)	36 (91)	48 (122)	60 (152)	72 (183)
Overall Depth (in) (cm)	30 (75)	30 (75)	30 (75)	30 (75)	30 (75)
Gross Cubage (CuFt) (L)	7.2 (204)	9.9 (280)	13.4 (379)	16.2 (459)	20.4 (578)
Number of 1/6 Pans	8	10	12	16	18
Number of Shelves	1	2	2	2	3
Shelf Area (SqFt) (Sqm)	4.82 (0.45)	7.02 (0.65)	9.25 (0.86)	12.35 (1.15)	14.19 (1.32)
Number of Casters	4	4	4	4	4
Condensing Unit Size	1/5 HP	1/5 HP	3/8 HP	3/8 HP	3/8 HP
Refrigerant	R290	R290	R290	R290	R290
Electrical Characteristics	115/60/1	115/60/1	115/60/1	115/60/1	115/60/1
Cord and Plug Furnished	Yes	Yes	Yes	Yes	Yes
NEMA Plug Configuration	5-15P	5-15P	5-15P	5-15P	5-15P
Total Amp Draw	2.1	2.1	3.2	3.2	3.2

Specifications subject to change without notice.



Revision Date: 1/19
Part Number: 146621