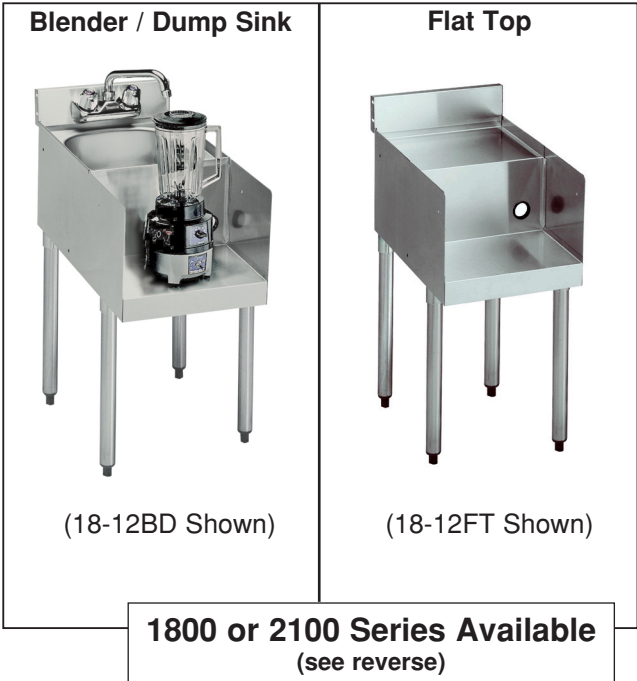




Model: \_\_\_\_\_  
 Item #: \_\_\_\_\_ Quantity: \_\_\_\_\_  
 Project: \_\_\_\_\_



- **Sink Bowls:**  
20 gauge stainless steel 10" x 14" x 6" deep with a 1 1/2" drain located in center.
- **Backsplash:**  
22 gauge stainless steel.
- **Sides:**  
18 gauge stainless steel.
- **Back and Bottom:**  
20 gauge galvanized.
- **Legs:**  
1 5/8" tubular 16 gauge galvanized steel with grey plastic bullet foot.
- **Shelf:**  
22 gauge stainless.
- **Electrical:**  
Duplex outlet located underneath.
- **Plumbing:**  
1/2" IPS hot and cold water.  
1 1/2" IPS drain connection.
- **Water Faucet:**  
4" center splash mount faucet on 1800 models.  
4" center deck mount faucet on 2100 models.

### Accessories

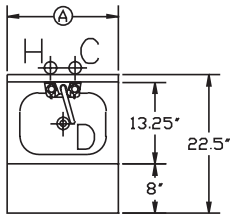
- Side Splash.
- Perforated Dump Basket.
- Towel Ring.
- Stainless Steel Legs (Upgrade).
- Royal Faucet (Upgrade).

Approved By: \_\_\_\_\_

Model: \_\_\_\_\_ Item #: \_\_\_\_\_ Quantity: \_\_\_\_\_ Project: \_\_\_\_\_

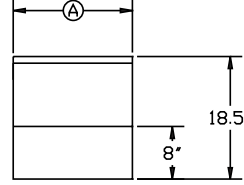
## 1800 Series

### Blender Station

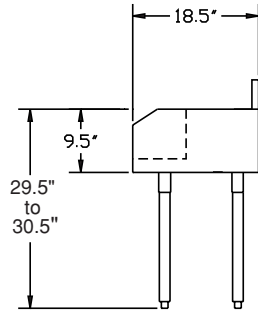
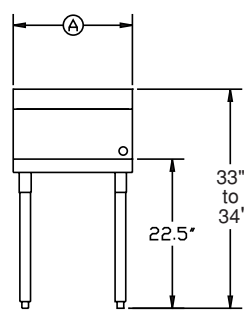
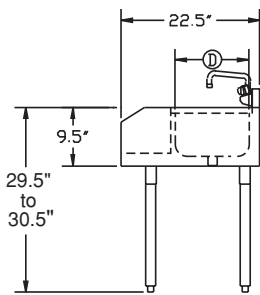
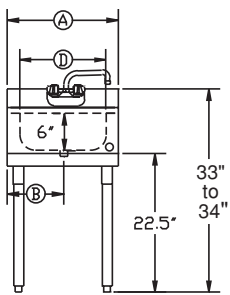


Model Numbers	Length (A)	Left Side to Drain (B)	Bowl Size (D)	Leg Location	Weight lbs.
18-12BDR	1'-0"	6"	10" x 12"	Right	30
18-12BDL	1'-0"	6"	10" x 12"	Left	30
18-12BD	1'-0"	6"	10" x 12v	Four	30
18-18BDR	1'-6"	9"	10" x 14"	Right	39
18-18BDL	1'-6"	9"	10" x 14"	Left	39
18-18BD	1'-6"	9"	10" x 14"	Four	39

### Flat Top

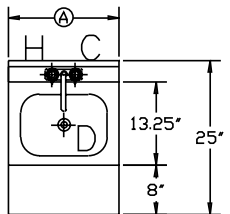


Model Numbers	Length (A)	Leg Location	Weight lbs.
18-12FTR	1'-0"	Right	30
18-12FTL	1'-0"	Left	30
18-12FT	1'-0"	Four	30
18-18FTR	1'-6"	Right	39
18-18FTL	1'-6"	Left	39
18-18FT	1'-6"	Four	39



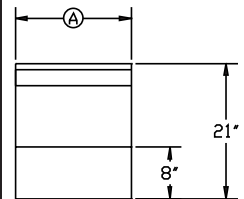
## 2100 Series

### Blender Station

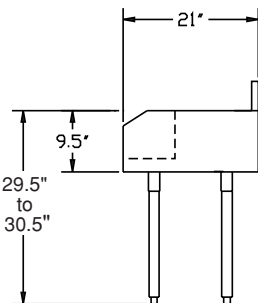
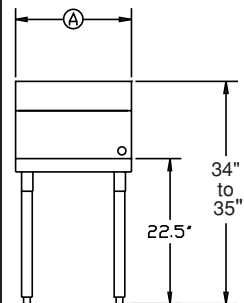
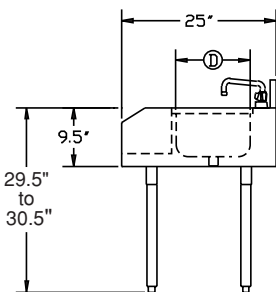
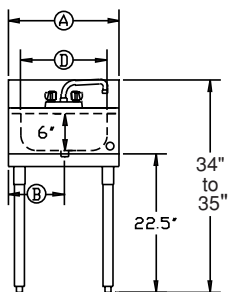


Model Numbers	Length (A)	Left Side to Drain (B)	Bowl Size (D)	Leg Location	Weight lbs.
21-12BDR	1'-0"	6"	10" x 12"	Right	30
21-12BDL	1'-0"	6"	10" x 12"	Left	30
21-12BD	1'-0"	6"	10" x 12"	Four	30
21-18BDR	1'-6"	9"	10" x 14"	Right	39
21-18BDL	1'-6"	9"	10" x 14"	Left	39
21-18BD	1'-6v	9"	10" x 14"	Four	39

### Flat Top



Model Numbers	Length (A)	Leg Location	Weight lbs.
21-12FTR	1'-0"	Right	30
21-12FTL	1'-0"	Left	30
21-12FT	1'-0"	Four	30
21-18FTR	1'-6"	Right	39
21-18FTL	1'-6"	Left	39
21-18FT	1'-6"	Four	39



### Mechanical Requirements:

1/2" IPS hot and cold water  
1 1/2" IPS drain connection

Approved By: \_\_\_\_\_