

Model: _____ Item #: _____ Date: _____
 Project: _____ Qty: _____ Approved By: _____



BC48-SS Shown
 Available in Black Vinyl or Stainless Steel Finish

Standard Features

Electrical

- 115 V, 1 Phase, 60 Hz. Furnished with 8'-0" plug-in cord, which exist left rear of cooler
- NEMA 5-15P Plug Configuration
- Dedicated 15 amp circuit recommended

Refrigeration

- Self-contained 1/3HP 134A Refrigerant. 30°F-40°F operating range
- 24" & 36" Units: Self-contained 1/5 HP 134A Refrigerant
- 30°F-40°F operating range

Interior

- Interior Floor: 20 gauge stainless steel (all models)
- Interior Walls: 20 gauge stainless steel (all models)
- Partitions: Adjustable, chrome plated

Exterior

- BG Models - Front & Sides: 20 gauge black vinyl
- All Models - Back: 20 gauge galvanized steel
- SS Models - Front & Sides: 20 gauge stainless steel

Doors

- Heavy-Duty foamed-in-place with rugged grab bar handle and optional locks

Insulation

- 2" thick foamed-in-place polyurethane

Plumbing

- No drain connection required.
- Condensate evaporator pan included

Optional Accessories

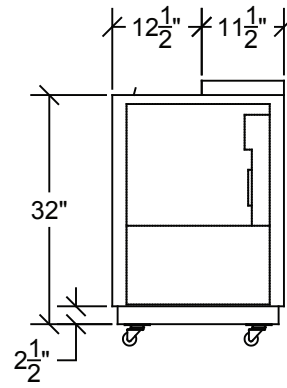
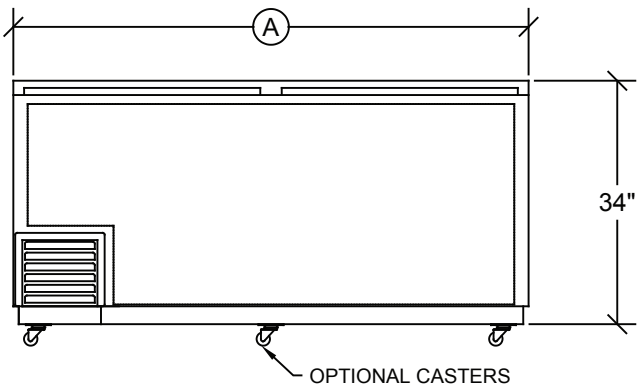
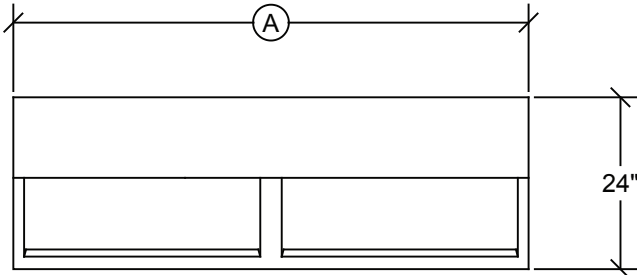
Model	Description
BC-100	LED Interior Light Kit
BC-130	Four 1" Ultra Low Profile Casters with Brakes
BC-131	Six 1" Ultra Low Profile Casters with Brakes (72" and 96" models)
BC-132	Four 2" Ultra Low Profile Casters with Brakes
BC-133	Six 2" Ultra Low Profile Casters with Brakes (72" and 96" models)
BC-134	Four 3" Casters with Brakes
BC-135	Six 3" Casters With Brakes (72" and 96" models)
BC-111	Bottle Opener and Cap Catcher
BC-536	Additional Wire Partition
BC-619	Locks

Notes

- All units come with Stainless Steel Interior
- This equipment is intended for the storage and display of non-potentially-hazardous bottle or canned products only.



Model: _____ Item #: _____ Date: _____
 Project: _____ Qty: _____ Approved By: _____



Model Numbers	Overall Length	Doors	Exterior Finish (Front & Sides)	Interior Sides	Divider Racks	Case Capacity (12 oz. Bottles)	HP	Full Load Amps	Weight (lbs.)
BC24-BG	2'-0"	1	Black Vinyl	Stainless Steel	1	5	1/5	4.0	204
BC24-SS	2'-0"	1	Stainless Steel	Stainless Steel	1	5	1/5	4.0	204
BC36-BG	3'-0"	1	Black Vinyl	Stainless Steel	2	8	1/5	4.0	220
BC36-SS	3'-0"	1	Stainless Steel	Stainless Steel	2	8	1/5	4.0	220
BC48-BG	4'-0"	2	Black Vinyl	Stainless Steel	3	14 1/2	1/3	5.5	300
BC48-SS	4'-0"	2	Stainless Steel	Stainless Steel	3	14 1/2	1/3	5.5	300
BC72-BG	6'-0"	2	Black Vinyl	Stainless Steel	4	25 1/2	1/3	6.0	405
BC72-SS	6'-0"	2	Stainless Steel	Stainless Steel	4	25 1/2	1/3	6.0	405
BC96-BG	8'-0"	3	Black Vinyl	Stainless Steel	5	35 1/2	1/3	6.6	500
BC96-SS	8'-0"	3	Stainless Steel	Stainless Steel	5	35 1/2	1/3	6.6	500

NOTE: All units come with Stainless Steel Interior

