

Model: _____

Item #: _____ Quantity: _____

Project: _____



1800 or 2100 Series Available
(see reverse)

- **Drainboard:**
20 gauge 304 series embossed stainless steel reinforced with welded braces every 6 inches.
3/4" radius on all vertical and horizontal edges.
- **Front Apron:**
20 gauge 304 series stainless steel clad over 20 gauge galvaneal.
- **Backsplash:**
20 gauge 304 series stainless steel.
- **Back and Bottom:**
20 gauge galvaneal.
- **Sides:**
20 gauge 304 series stainless steel.
- **Legs:**
1 5/8" tubular 16 gauge stainless steel with grey thermoplastic bullet foot.
- **Plumbing:**
1" IPS drain connection.

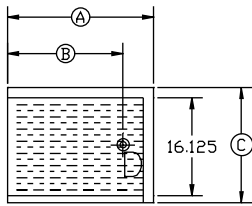
Accessories

- Built-in 20 gauge Sound Deadened Krowne Royal Single Speedrail
- Built-in 20 gauge Sound Deadened Krowne Royal Double Speedrail
- Cap Catcher and Opener
- 4" x 4" cutout with chase for beer lines
- 3/4" x 3 1/2" cutout in backsplash for soda lines (1800)
- 1/2" x 4 1/2" cutout in backsplash for soda lines (2100)

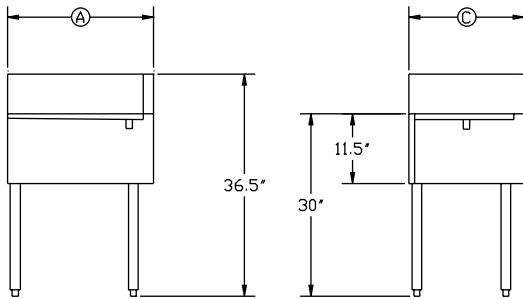
Approved By: _____

Model: _____ Item #: _____ Quantity: _____ Project: _____

1800 Series

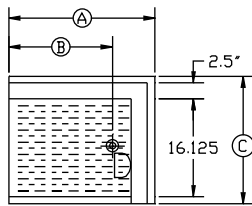


Note: Letter "D" at the end of the Model Number indicates Deep Style.

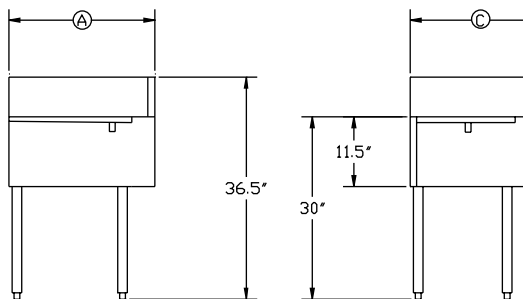


Model Numbers	Length (A)	Left Side to Drain (B)	Depth (C)	Back Side to Drain (D)	Return End	Weight lbs.
KR18-C18L	1'-6"	14"	19"	9 1/2"	Left	41
KR18-C18R	1'-6"	14"	19"	9 1/2"	Right	41
KR18-C18LD	1'-6"	14"	24"	11 1/2"	Left	46
KR18-C18RD	1'-6"	14"	24"	11 1/2"	Right	46
KR18-C24L	2'-0"	20"	19"	9 1/2"	Left	47
KR18-C24R	2'-0"	20"	19"	9 1/2"	Right	47
KR18-C24LD	2'-0"	20"	24"	11 1/2"	Left	52
KR18-C24RD	2'-0"	20"	24"	11 1/2"	Right	52
KR18-C30L	2'-6"	26"	19"	9 1/2"	Left	53
KR18-C30R	2'-6"	26"	19"	9 1/2"	Right	53
KR18-C30LD	2'-6"	26"	24"	11 1/2"	Left	58
KR18-C30RD	2'-6"	26"	24"	11 1/2"	Right	58
KR18-C36L	3'-0"	32"	19"	9 1/2"	Left	59
KR18-C36R	3'-0"	32"	19"	9 1/2"	Right	59
KR18-C36LD	3'-0"	32"	24"	11 1/2"	Left	64
KR18-C36RD	3'-0"	32"	24"	11 1/2"	Right	64
KR18-C42L	3'-6"	21"	19"	9 1/2"	Left	65
KR18-C42R	3'-6"	21"	19"	9 1/2"	Right	65
KR18-C42LD	3'-6"	21"	24"	11 1/2"	Left	70
KR18-C42RD	3'-6"	21"	24"	11 1/2"	Right	70
KR18-C48L	4'-0"	24"	19"	9 1/2"	Left	71
KR18-C48R	4'-0"	24"	19"	9 1/2"	Right	71
KR18-C48LD	4'-0"	24"	24"	11 1/2"	Left	76
KR18-C48RD	4'-0"	24"	24"	11 1/2"	Right	76

2100 Series



Note: Letter "D" at the end of the Model Number indicates Deep Style.



Model Numbers	Length (A)	Left Side to Drain (B)	Depth (C)	Back Side to Drain (D)	Return End	Weight lbs.
KR21-C18L	1'-6"	12"	21"	9 1/2"	Left	41
KR21-C18R	1'-6"	12"	21"	9 1/2"	Right	41
KR21-C18LD	1'-6"	12"	26"	11 1/2"	Left	46
KR21-C18RD	1'-6"	12"	26"	11 1/2"	Right	46
KR21-C24L	2'-0"	20"	21"	9 1/2"	Left	47
KR21-C24R	2'-0"	20"	21"	9 1/2"	Right	47
KR21-C24LD	2'-0"	20"	26"	11 1/2"	Left	52
KR21-C24RD	2'-0"	20"	26"	11 1/2"	Right	52
KR21-C30L	2'-6"	26"	21"	9 1/2"	Left	53
KR21-C30R	2'-6"	26"	21"	9 1/2"	Right	53
KR21-C30LD	2'-6"	26"	26"	11 1/2"	Left	58
KR21-C30RD	2'-6"	26"	26"	11 1/2"	Right	58
KR21-C36L	3'-0"	32"	21"	9 1/2"	Left	59
KR21-C36R	3'-0"	32"	21"	9 1/2"	Right	59
KR21-C36LD	3'-0"	32"	26"	11 1/2"	Left	64
KR21-C36RD	3'-0"	32"	26"	11 1/2"	Right	64
KR21-C42L	3'-6"	21"	21"	9 1/2"	Left	65
KR21-C42R	3'-6"	21"	21"	9 1/2"	Right	65
KR21-C42LD	3'-6"	21"	26"	11 1/2"	Left	71
KR21-C42RD	3'-6"	21"	26"	11 1/2"	Right	71
KR21-C48L	4'-0"	24"	21"	9 1/2"	Left	71
KR21-C48R	4'-0"	24"	21"	9 1/2"	Right	71
KR21-C48LD	4'-0"	24"	26"	11 1/2"	Left	76
KR21-C48RD	4'-0"	24"	26"	11 1/2"	Right	76

Mechanical Requirements:

1" IPS Drain Connection.

Approved By: _____

Due to our commitment to continued product improvement, specifications are subject to change without notice.