



ROYAL SERIES UNDERBAR STORAGE CABINETS

MODEL: _____ PROJECT: _____ ITEM #: _____ QTY: _____

PRODUCT IMAGES



KR18-S24 SHOWN



KR18-SD24 SHOWN

STANDARD FEATURES

- **Drainboard**
20 gauge embossed stainless steel reinforced with welded braces every 6" . 3/4" radius on all vertical and horizontal edges
- **Front Apron**
20 gauge stainless steel
- **Backsplash**
20 gauge stainless steel
- **Sides**
20 gauge stainless steel
- **Back and Bottom**
20 gauge stainless steel
- **Doors (Optional)**
20 gauge stainless steel
- **Legs**
1 5/8" tubular 16 gauge stainless steel with grey plastic bullet foot
- **Plumbing**
1" IPS drain connection

AVAILABLE IN 1800 or 2100 SERIES

OPTIONAL ACCESSORIES

- **KR-SS** Stainless Steel Middle Shelf for Cabinet
- **KR-310** Right End Splash
- **KR-311** Left End Splash



APPROVED BY:

CERTIFICATIONS:

Due to our commitment to continued product improvement, specifications are subject to change without notice.

Printed in the USA

Krowne Metal Corporation

100 Haul Rd. Wayne, NJ 07470 • Toll Free: (800) 631-0442 • Fax: (973) 872-1129
sales@krowne.com • www.krowne.com • www.facebook.com/KrowneMetal • www.twitter.com/KrowneMetal

KaTom Restaurant Supply, Inc.

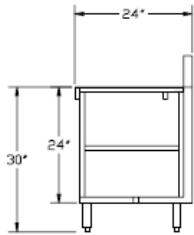
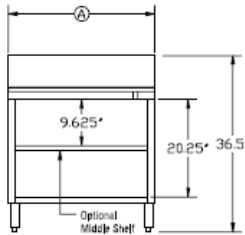
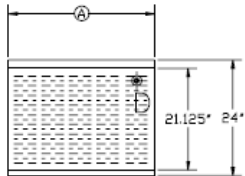
Rev. 09/2011
No. 5.23



ROYAL SERIES UNDERBAR STORAGE CABINETS

MODEL: _____ PROJECT: _____ ITEM #: _____ QTY: _____

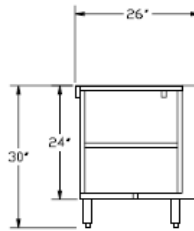
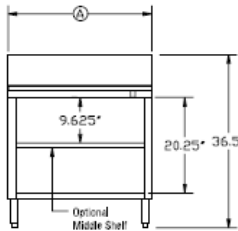
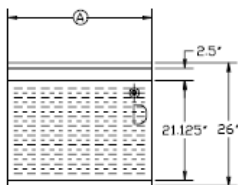
1800 SERIES



Model Numbers	Overall Length Ⓐ	Doors	Weight (lbs.)
KR18-S12	1'-0"	N/A	50
KR18-SD12	1'-0"	1	60
KR18-S18	1'-6"	N/A	65
KR18-SD18	1'-6"	1	75
KR18-S24	2'-0"	N/A	100
KR18-SD24	2'-0"	1	115
KR18-S30	2'-6"	N/A	100
KR18-SD30	2'-6"	2	130
KR18-S36	3'-0"	N/A	140
KR18-SD36	3'-0"	2	160
KR18-S48	4'-0"	N/A	150
KR18-SD48	4'-0"	2	170

MECHANICAL REQUIREMENTS: 1" IPS drain connection.

2100 SERIES



Model Numbers	Overall Length Ⓐ	Doors	Weight (lbs.)
KR21-S12	1'-0"	N/A	50
KR21-SD12	1'-0"	1	60
KR21-S18	1'-6"	N/A	65
KR21-SD18	1'-6"	1	75
KR21-S24	2'-0"	N/A	100
KR21-SD24	2'-0"	1	115
KR21-S30	2'-6"	N/A	100
KR21-SD30	2'-6"	2	130
KR21-S36	3'-0"	N/A	140
KR21-SD36	3'-0"	2	160
KR21-S48	4'-0"	N/A	150
KR21-SD48	4'-0"	2	170

MECHANICAL REQUIREMENTS: 1" IPS drain connection.



APPROVED BY:

CERTIFICATIONS:

Due to our commitment to continued product improvement, specifications are subject to change without notice.

Printed in the USA

Krowne Metal Corporation

100 Haul Rd. Wayne, NJ 07470 • Toll Free: (800) 631-0442 • Fax: (973) 872-1129

sales@krowne.com • www.krowne.com • www.facebook.com/KrowneMetal • www.twitter.com/KrowneMetal

KaTom Restaurant Supply, Inc.

Rev. 09/2011
No. 5.23