

# F-Style Large Capacity Ice Storage Bins

## Models

 F-700

 F-1300

 F-1325

 F-1650

 FC-1350


F-1300 Ice Storage Bin



FC-1350 Ice Storage Bin & Cart System

## Standard Features

Manitowoc F-style large capacity ice storage bins are equipped with a sliding ice gate for increased employee safety, easier ice removal, and reduced spillage.

Choose a bin width from 30", 48" or 60", with application ice storage capacities of 639, 1194, 1238, 1304 and 1494 lbs.

### Sliding Ice Gate

- Controls ice flow into snout for easy removal with either scoop or shovel
- Returns easily to the full down position to stop ice filling.

### Quality Construction:

- Stainless Steel Exterior
- Heavy-duty welded construction
- Non -CFS foamed-in-place insulation
- Impact -resistant sliding windows for easy bin inspection.

### Durable Polyethylene Lift Door

- Ball catch hinge holds bin door open when scooping ice
- Eliminates sharp corners and gaskets
- Provides outstanding durability
- Offers maximum access for fast, easy ice removal
- Impact-resistant sliding windows for easy bin inspection

### Warranty

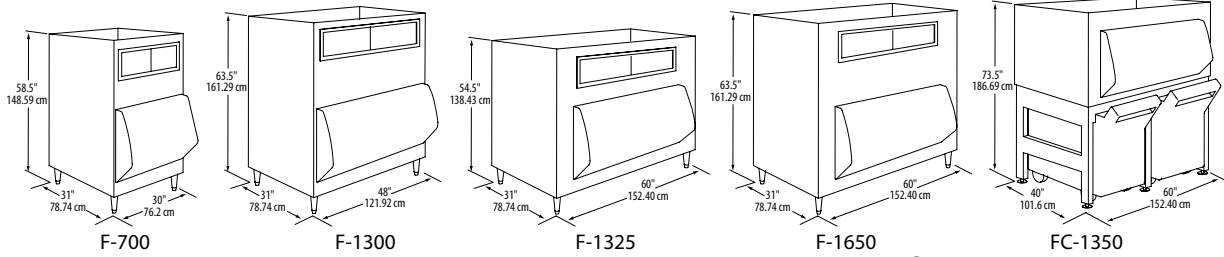
Bin & Accessories: 3-Year Parts & Labor  
Carts: 2-Year Parts & Labor



F-Style Large Capacity Ice Storage Bins



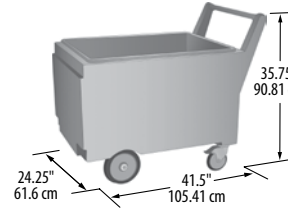
F-Style Large Capacity Ice Storage Bins



**Standard Equipment**

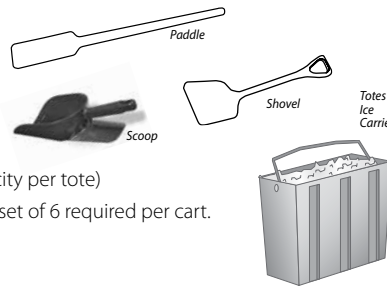
**F-Series Bins Include:** set of (4) 6" bin legs, ice scoop, stainless steel adapter for 30" or 48" Indigo Series Cubers (see chart)

**FC-1350 Bin and Cart System Includes:** bin, base, (2) 240 lb. capacity carts with lids, set of (6) flanged legs, Ice Paddle, stainless steel adapter for 30" or 48" Indigo Series Cubers (see chart)



**Accessories**

- Model # Description**
  - K-00412 Paddle 46.5" (118.11 cm) length
  - 00004199 85 oz. Scoop
  - K-00414 Shovel 36" (91.44 cm) Length
  - K-00416 Totes Ice Carrier, Set of 6 (25 lb. capacity per tote)
- Totes for use with FC-1350 cart. One set of 6 required per cart.



**Storage Capacity**

	Model	Application Storage lbs/kg	AHRI Theretical Storage lbs/kg	AHRI approved Cu. Ft
30"	F-700	639	520	21.5
		290	236	
45"	F-1300	1194	970	40.2
		542	440	
60"	F-1325	1238	1000	41.7
		562	454	
	F-1650	1494	1210	50.3
		678	549	
FC-1350	1304	1050	43.9	
591	476			

**Ice Deflectors — Required**

Manitowoc Cuber Model	Ice Deflector Model Number
iT0450, iT0500, iF0600, iF0900, iT1200	K-00347
iT1500, iT1900	K-00349
iF1400C, iF1800C, iF2100C	K-00382 (for single ice machine) K-00383 (for side-by-side ice machines)
SF3000C and ST3000W	K-00391

*Application Capacity- measured 90% of the total volume in cu. ft. x 33 lbs/ft<sup>3</sup>.*

**Bin Adapters**

Model	Ice Makers on bin	Bin Width	iT0500	iF0600	iF0900 iT1200	iF0600C iF0900C i1176C	iF1400C, iF1800C, iF2100C	iT1500 iT1900	RNS0308 RNS0600 RNS1078C RFS0300 RFS0650 RFS1278C	RNS1000 RFS1200 RFS2378C RFS2300	RFF2500	ST3000W SF3000C	
<b>Model Width</b>			30"	30"	30"	30"	30"	48"	22"	30"	36.7"	48"	
F-700	1	30"	K-303000 Single head Adapter (included with bin)					N/A	+K302200	K303000 included		N/A	N/A
F-1300	1	48"	K-483048 Single head Adapter (included with Bin)					N/A					
F-1325, F-1650	1	60"	K-603048 Single head Adapter (included with Bin)					N/A					
	2*	60"	K-603030 Side-by-Side 30" Head Adapter					N/A	+K-00421 & K-603030	+K603030	N/A	N/A	
FC-1350	1	60"	K-613048 Single head Adapter (included with Bin)					N/A					
	2*	60"	K-613030 Side-by-Side 30" Head Adapter					N/A	+K-00421 & K-613030	+K603030	N/A	N/A	

*\*For side by side application use with water-cooled, or ice machines with top air discharge option. Check machine clearance requirements. Shaded area indicates not a product application*

Welbilt reserves the right to make changes to the design or specifications without prior notice.