



**John
BOOS**
Since 1887

ITEM #: _____ QTY: _____

MODEL #: _____

PROJECT NAME: _____

3601 S. Banker St. Effingham, IL 62401 • P.O. BOX 609 • Ph: (888) 431-2667 • Fax: (800) 433-2667

"CDT-S" "CLEAN STRAIGHT DISHTABLES " PRO BOWL

FEATURES:

- TYPE 300 STAINLESS STEEL WITH # 4 POLISH, SATIN FINISH
- FULL LENGTH **10" HIGH BOXED BACKSPASH**, WITH 2" RETURN TO WALL AT 45 DEGREE AND 1" TURNED DOWN REAR LIP
- ALL OUTSIDE CORNERS OF ASSEMBLY ARE BULLNOSED TO PROVIDE SAFE, CLEAN, AND POLISHED EDGE
- STANDARD 1-5/8" DIAMETER LEGS



CONSTRUCTION:

- TOP: STAINLESS STEEL TOPS ARE TIG WELDED, EXPOSED WELDS ARE POLISHED TO MATCH ADJACENT SURFACE.

MATERIAL:

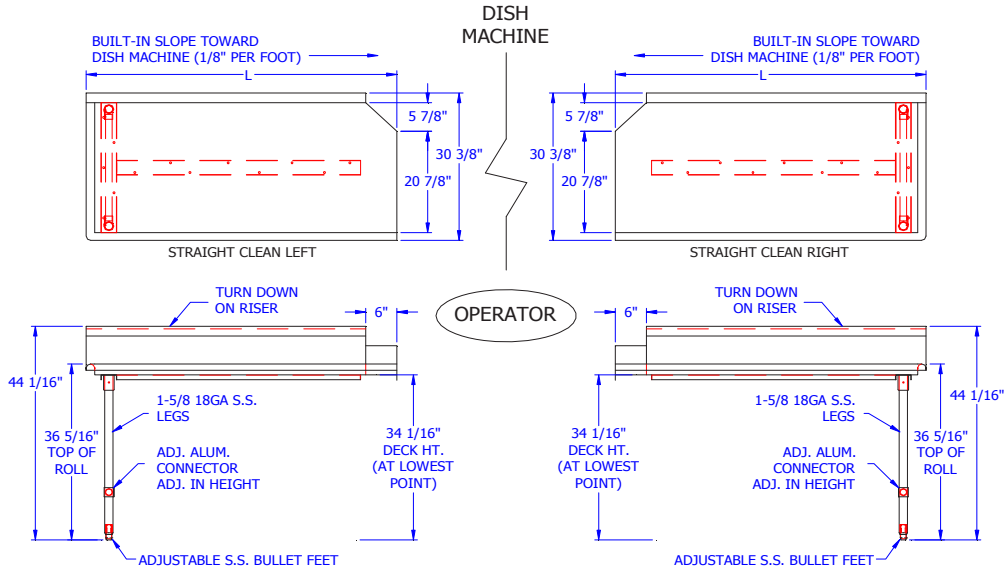
- TOP: STAINLESS STEEL TYPE 300 STAINLESS STEEL WITH #4 POLISH, SATIN FINISH
- FEET: 1" ADJUSTABLE STAINLESS STEEL BULLET FEET

14 GAUGE 304 16 GA. STAINLESS STEEL LEGS		16 GAUGE 304 16 GA. STAINLESS STEEL LEGS		16 GAUGE 304 GALVANIZED LEGS	
PREMIUM	QTY	STANDARD	QTY	VALUE	QTY
CDT4-S24SBK-L OR R		CDT6-S24SBK-L OR R		CDT6-S24GBK-L OR R	
CDT4-S36SBK-L OR R		CDT6-S36SBK-L OR R		CDT6-S36GBK-L OR R	
CDT4-S48SBK-L OR R		CDT6-S48SBK-L OR R		CDT6-S48GBK-L OR R	
CDT4-S60SBK-L OR R		CDT6-S60SBK-L OR R		CDT6-S60GBK-L OR R	
CDT4-S72SBK-L OR R		CDT6-S72SBK-L OR R		CDT6-S72GBK-L OR R	
CDT4-S84SBK-L OR R		CDT6-S84SBK-L OR R		CDT6-S84GBK-L OR R	
CDT4-S96SBK-L OR R		CDT6-S96SBK-L OR R		CDT6-S96GBK-L OR R	
CDT4-S108SBK-L OR R		CDT6-S108SBK-L OR R		CDT6-S108GBK-L OR R	
CDT4-S120SBK-L OR R		CDT6-S120SBK-L OR R		CDT6-S120GBK-L OR R	
CDT4-S132SBK-L OR R		CDT6-S132SBK-L OR R		CDT6-S132GBK-L OR R	
CDT4-S144SBK-L OR R		CDT6-S144SBK-L OR R		CDT6-S144GBK-L OR R	

OPTIONAL ACCESSORIES

DESCRIPTION	MODEL #	QTY
OVER SHELF		
UNDER SHELF		

DETAILED SPECIFICATIONS



• UNITS 7 FT. AND LARGER ARE FURNISHED WITH SIX LEGS.

LENGTH	14 GAUGE 304 16 GA. STAINLESS STEEL LEGS		16 GAUGE 304 16 GA. STAINLESS STEEL LEGS		16 GAUGE 304 GALVANIZED LEGS	
	PREMIUM	WT. (LBS)	STANDARD	WT. (LBS)	VALUE	WT. (LBS)
24"	CDT4-S24SBK-L OR R	46	CDT6-S24SBK-L OR R	37	CDT6-S24GBK-L OR R	37
36"	CDT4-S36SBK-L OR R	59	CDT6-S36SBK-L OR R	47	CDT6-S36GBK-L OR R	47
48"	CDT4-S48SBK-L OR R	78	CDT6-S48SBK-L OR R	62	CDT6-S48GBK-L OR R	62
60"	CDT4-S60SBK-L OR R	90	CDT6-S60SBK-L OR R	72	CDT6-S60GBK-L OR R	72
72"	CDT4-S72SBK-L OR R	109	CDT6-S72SBK-L OR R	87	CDT6-S72GBK-L OR R	87
84"	CDT4-S84SBK-L OR R	130	CDT6-S84SBK-L OR R	104	CDT6-S84GBK-L OR R	104
96"	CDT4-S96SBK-L OR R	143	CDT6-S96SBK-L OR R	113	CDT6-S96GBK-L OR R	114
108"	CDT4-S108SBK-L OR R	174	CDT6-S108SBK-L OR R	139	CDT6-S108GBK-L OR R	139
120"	CDT4-S120SBK-L OR R	205	CDT6-S120SBK-L OR R	164	CDT6-S120GBK-L OR R	164
132"	CDT4-S132SBK-L OR R	236	CDT6-S132SBK-L OR R	189	CDT6-S132GBK-L OR R	189
144"	CDT4-S144SBK-L OR R	268	CDT6-S144SBK-L OR R	214	CDT6-S144GBK-L OR R	214

MODEL # STRUCTURE

60 = TOTAL WIDTH OF DISHTABLE
 S = STRAIGHT DISHTABLE
 6 = 16GA WORK SURFACE
 CDT = CLEAN DISHTABLE

SB = STAINLESS LEGS & BRACING
 K = K.D. W/ ADJUSTABLE BRACING
 L OR R = LEFT OR RIGHT DISHTABLE

CDT6-S60SBK-L

SOME UNITS SHIP UNASSEMBLED FOR REDUCED SHIPPING COST. ALL DIMENSIONS ARE TYPICAL! TOLERANCE +/- .500"
 John Boos & Co. is constantly engaged in a program of improving products and therefore reserves the right to change specifications without prior notice.