



**John
BOOS**
Since 1887

ITEM #: _____ QTY: _____
 MODEL #: _____
 PROJECT NAME: _____

121817

3601 S. Banker St. Effingham, IL 62401 • P.O. BOX 609 • Ph: (888) 431-2667 • Fax: (800) 433-2667

"EUBIB-21CP" UNDERBAR INSULATED ICE BINS

W/ COLD PLATE

FEATURES:

- STAINLESS STEEL CIRCUITS IN SOLID ALUMINUM PLATE
- AVAILABLE IN 7-CIRCUIT COLD PLATE (NSF CERTIFIED)
- AVAILABLE IN 10-CIRCUIT COLD PLATE (NSF CERTIFIED)
- INSULATED ICE BIN 12" DEEP WITH DRAIN
- STAINLESS STEEL LEGS AND BRACING WITH ADJUSTABLE BULLET FEET
- ICE BIN LID INCLUDED

MATERIAL:

- TOP: 18GA 300 SERIES STAINLESS STEEL
- BRACING: STAINLESS STEEL
- LEGS: STAINLESS STEEL
- FEET: PLASTIC

CONSTRUCTION:

- TOP: STAINLESS STEEL TOPS ARE TIG WELDED, EXPOSED WELDS ARE POLISHED TO MATCH ADJACENT SURFACE.

NSF

7-CIRCUIT COLD PLATE UNDERBAR INSULATED ICE BINS

MODEL #	QTY
EUBIB-2421CP7	
EUBIB-3021CP7	
EUBIB-3621CP7	
EUBIB-4821CP7	

NSF

10-CIRCUIT COLD PLATE UNDERBAR INSULATED ICE BINS

MODEL #	QTY
EUBIB-3021CP10	
EUBIB-3621CP10	
EUBIB-4821CP10	

BOTTLE WELL HOLDERS

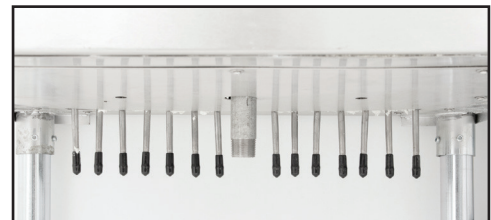
MODEL #	QTY
UB-BWH	

OPTIONAL ACCESSORIES

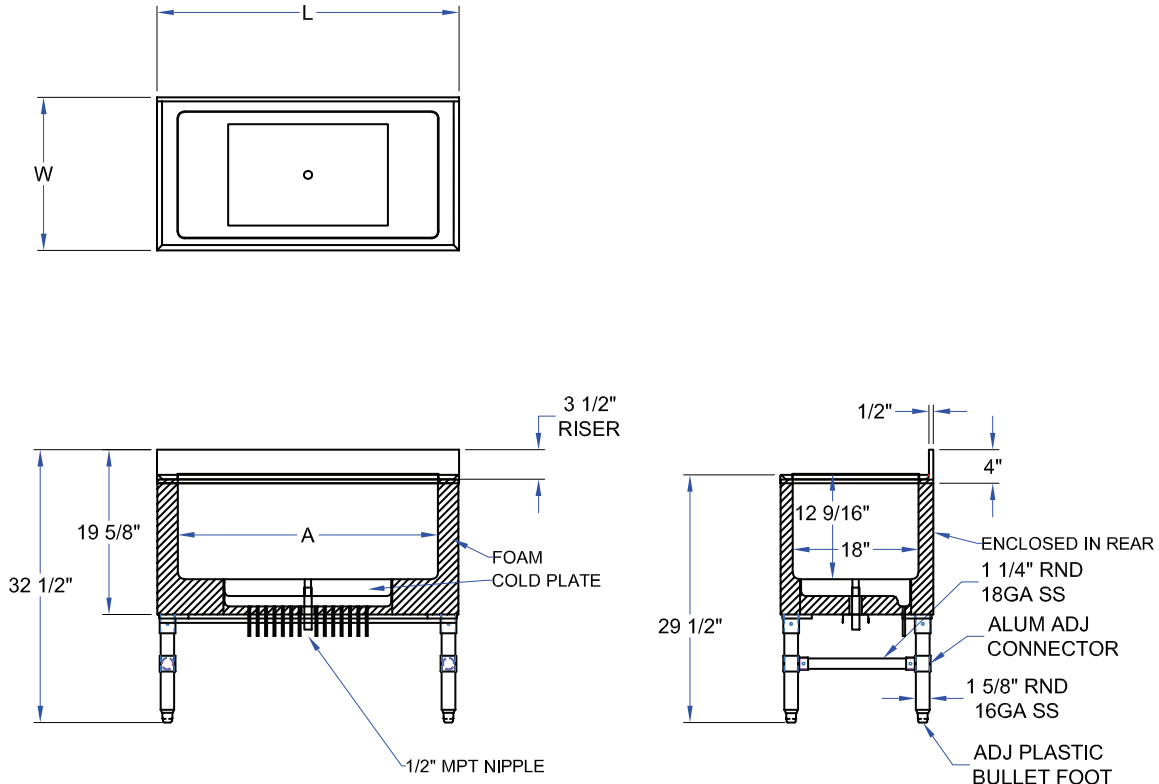
MODEL #	QTY
SPEED RAILS	
STAINLESS STEEL LEGS	



EUBIB-2421CP7



DETAILED SPECIFICATIONS



BOTTLE WELL HOLDERS

MODEL #	LENGTH	WIDTH	HEIGHT	WT. (LBS)
UB-BWH	17-1/2"	5"	5"	2.35

FITS STANDARD 21" ICE BINS W/ & W/OUT COLD PLATES



7-CIRCUIT COLD PLATE - UNDERBAR INSULATED ICE BINS

MODEL #	LENGTH	WIDTH	HEIGHT	A	WT. (LBS)
EUBIB-2421CP7	24"	21"	29-1/2"	20-3/8"	75
EUBIB-3021CP7	30"	21"	29-1/2"	25"	94
EUBIB-3621CP7	36"	21"	29-1/2"	31"	105
EUBIB-4821CP7	48"	21"	29-1/2"	43"	150

WEIGHTS ARE SUBJECT TO ADDITIONAL PACKAGING



10-CIRCUIT COLD PLATE - UNDERBAR INSULATED ICE BINS

MODEL #	LENGTH	WIDTH	HEIGHT	A	WT. (LBS)
EUBIB-3021CP10	30"	21"	29-1/2"	25"	96
EUBIB-3621CP10	36"	21"	29-1/2"	31"	107
EUBIB-4821CP10	48"	21"	29-1/2"	43"	156

WEIGHTS ARE SUBJECT TO ADDITIONAL PACKAGING

SOME UNITS SHIP UNASSEMBLED FOR REDUCED SHIPPING COST. ALL DIMENSIONS ARE TYPICAL. TOLERANCE +/- .500"
 John Boos & Co. is constantly engaged in a program of improving products and therefore reserves the right to change specifications without prior notice.



3601 S. Banker St. • Effingham, IL 62401 • PO BOX 609 • quotes@johnboos.com

071317

5



www.johnboos.com