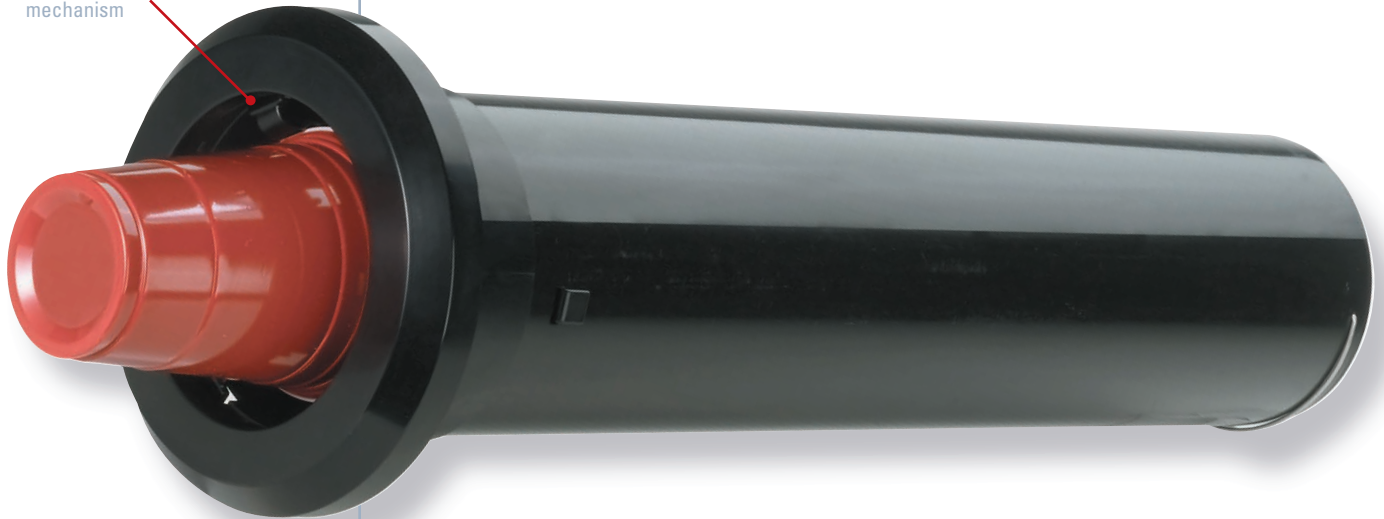


PRECISION ADJUSTMENT DISPENSING FLEXIBILITY

DISPENSE-RITE
simple and fast
precision adjustment
mechanism



STL SERIES ONE-SIZE-FITS-ALL IN-COUNTER ADJUSTABLE CUP DISPENSERS

DISPENSE-RITE STL-2 cup dispensers are the only dispensers you will need for a variety of paper, plastic and foam cups ranging from 8 oz. to 44 oz. STL-2 cup dispensers utilize a simple and fast tool free adjustment mechanism. These dispensers are designed for cups and containers with rim diameters ranging from 3 $\frac{3}{8}$ " – 4 $\frac{1}{2}$ ".

DISPENSE-RITE's precision three clip adjustment mechanism combined with a calibrated compression spring ensures one at a time dispensing in horizontal, angled or vertical mounting positions. Innovative design allows the dispenser to be adjusted without removing from the counter. Quality ABS plastic construction with a no-jam design provides years of dispensing reliability.

The integrated mounting collar fully supports the dispenser in horizontal, angled or vertical mounting positions; no additional support is necessary. Optional silver satin ring bezels are available. All models are NSF listed.

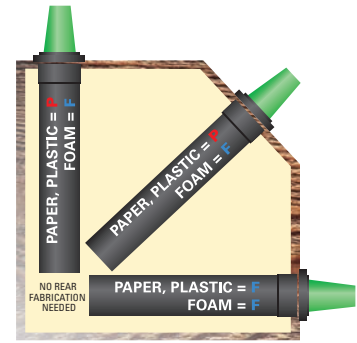
NSF

- Models listed on page 07 ship with 2 different compression springs: "F" & "P". See chart on page 02 for details.
- NOTE: Ounce capacities are provided for reference only, always verify cup rim diameter prior to ordering.



Model Number	Cup Rim Diameter Range	Under Counter Length	Ring Bezel Diameter	Mounting Hole Cut-Out
STL-2	3⅞"–4½"	22"	7⅞"	5¼"
STL-2S	3⅞"–4½"	17"	7⅞"	5¼"
STL-2L	3⅞"–4½"	28"	7⅞"	5¼"

Spring Configurations ▾



Cup Type	Position	Spring
Foam Cups	: Any Position	: F Spring
Paper Cups	: Horizontal	: F Spring
Plastic Cups	: Horizontal	: F Spring
Paper Cups	: Angled	: P Spring
Plastic Cups	: Angled	: P Spring
Paper Cups	: Vertical	: P Spring
Plastic Cups	: Vertical	: P Spring

Dispensers ship with both the "F" and "P" compression springs.

Single spring models are available; see price list for additional information.

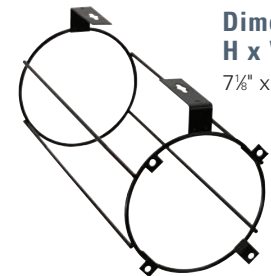
Color Ring Bezels ▾

Optional colored ring bezels are available in this popular color:

- SILVER SATIN (stainless finish)



Under Counter Bracket ▾



Dimensions
H x W x D
7⅞" x 6" x 15¼"

The optional **STL-2-SMB** wire surface mount bracket mounts to any flat surface or wire shelf and allows you to mount a STL-2 cup dispenser in horizontal, vertical or angled positions. Maximum counter lip is 1/2".

STL-2, STL-2S AND STL-2L ONE-SIZE-FITS-ALL IN-COUNTER ADJUSTABLE CUP DISPENSERS

With three under counter lengths to choose from the STL-2 cup dispenser can be ordered to suit your particular installation requirements.



STL-2 22" UNDER COUNTER LENGTH



STL-2S 17" UNDER COUNTER LENGTH



STL-2L 28" UNDER COUNTER LENGTH



The STL-2 dispenser accommodates a variety of cup sizes ranging from 8 oz. to 44 oz. Always verify cup rim diameter prior to ordering.

SIZE-RITE

MODEL	APPROX. CUP SIZE
STL-2	8 oz. to 44 oz.
STL-2S	8 oz. to 44 oz.
STL-2L	8 oz. to 44 oz.