



CMA-180-VL

High Temperature
3- Door Single Rack
Dishwasher



New
"Ventless"
Heat
Recovery and
Condensation
Removal
Option

Features:

- **Replaces need for independent vent hood.**
- Final rinse valve receives cold water (41-65° F) that is processed through "heat recovery system", providing nearly cost free heating capabilities for water supplied to the booster heater, which reduces the recovery time for the booster heater.
- Heat recovery system captures water vapor from the wash & rinse cycle, and condenses it to heat the incoming cold water & evacuate the steam from the wash chamber.
- Door-actuated start.
- Safe-T-Temp feature assures 180°F sanitizing rinse every cycle.
- 12kW electrical booster heater.
- Booster-safety thermostat.
- 6kW wash tank heater.
- Low max. 0.89 US gallons of water usage per rack.
- Minimum 90-second cycle. (60 second wash/rinse & 30 second steam evacuation)
- 40 racks per hour (based on 90-second cycle).
- Fully automatic cycle for easy operation.
- Water level safety control.
- Maximum clearance for dishes is 17-1/2".
- All Stainless Steel construction.
- Wash tank screens, which filter recirculating wash water, prevent soil from entering spray arms.
- 3-door feature for straight or corner applications.
- Automatic heat exchange condenser wash-down feature.
- Rinse PRV supplied (Pressure Regulating Valve).
- Field convertible from three phase to single phase.
- Simple, rugged durability that you expect from CMA.
- Door Safety Interlock System (DSI) assures that doors remain locked throughout the entire cycle, allowing the HR system to evacuate the vapor from the machine.

Available Options:

- Alternative electrical available for export
- Stainless steel dishtables
- Dual power supply connections

The "Ventless" option is a Heat Recovery Condensation Removal System:

Captures and distributes normally exhausted heat from the wash/rinse tank, using this FREE energy to pre-heat cold water prior to feeding the booster heater. Water entering the booster heater has been pre-heated, reducing the energy cost to bring booster temperature to required 180 degrees, potentially saving THOUSANDS of \$ in operational costs.

NO VENT HOOD REQUIRED: Saves THOUSANDS \$ on installation.

CMA
MIZER
Registered Trademark



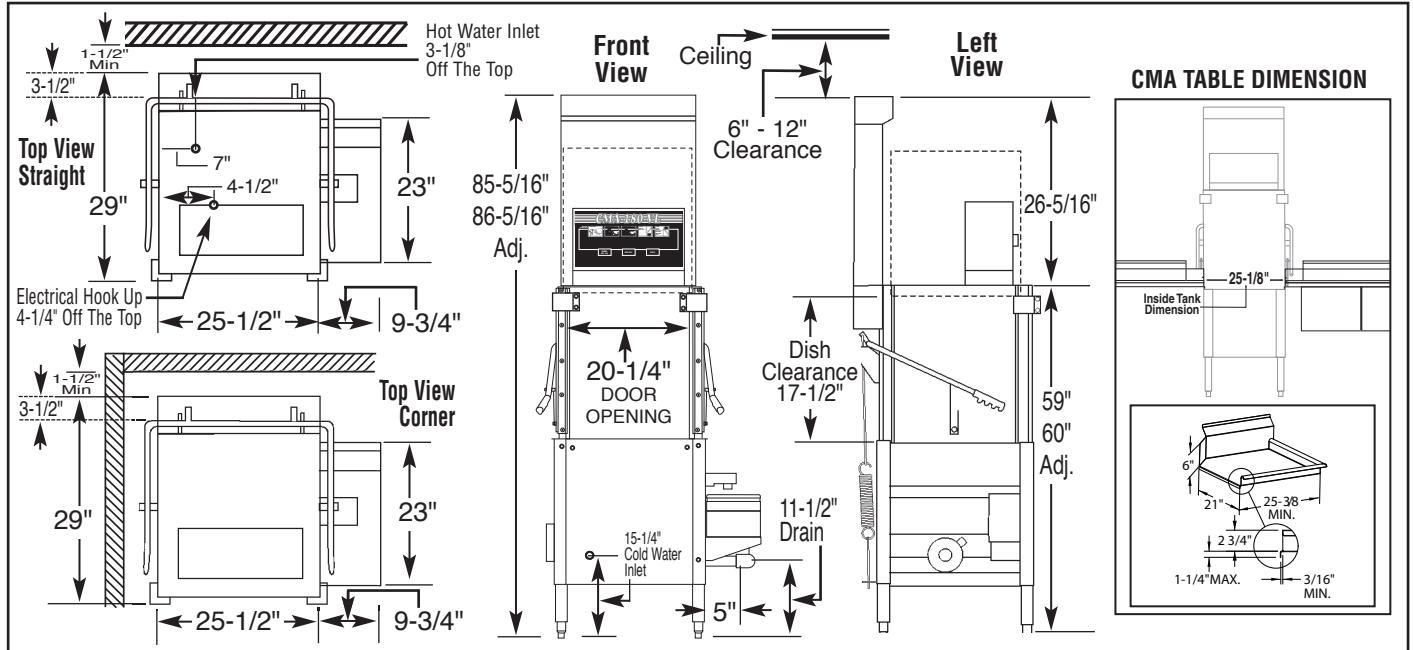


CMA-180-VL

High Temperature
3- Door Single Rack
Dishwasher

WARNINGS:

- Plumbing connections must be made by a qualified service company who will comply with all available Federal, State, and Local Health, Plumbing and Safety codes.
- CMA recommends utilizing a water softening system to maintain water hardness measurements of 3.5 gpg or less. This will assure maximum results and optimum operation of the dishmachine.



Specifications:

MODEL CMA-180-VL	USA	METRIC		USA	METRIC	
WATER CONSUMPTION			WASH PUMP MOTOR HP	1	1	
PER RACK (MAX)	.89 GAL	(3.37 L)	DIMENSIONS			
PER HOUR	36 GPH	(139 L)	DEPTH	29"	(76.7cm)	
OPERATING CYCLE			WIDTH (OUTSIDE DIMENSION)	25 -1/2"	(65cm)	
WASH TIME - SEC.	49	49	HEIGHT	85-5/16"-86-5/16"	(216-217cm)	
RINSE TIME - SEC.	12	12	STANDARD TABLE HEIGHT	34"	(86.3cm)	
STEAM EVACUATION	41	41	MINIMUM FAN CLEARANCE	6"	(15.2)	
TOTAL CYCLE	90	90	MAX CLEARANCE FOR DISHES	17-1/2"	(44cm)	
OPERATING CAPACITY			DRAIN CONNECTION (OFF FLOOR)	11-1/2"-12-1/2"	(29-32cm)	
RACKS PER HOUR	40	40	STANDARD DISHRACK	1	1	
WASH TANK CAPACITY	8 GAL.	(30.3 L)	DIMENSIONS	19-3/4" X 19-3/4"	(50X50cm)	
PUMP CAPACITY	52 GPM	(197 LPM)	ELECTRICAL RATING	VOLTS	PHASE	AMPS
WATER REQUIREMENTS				208	1	78
COLD WATER	41-65°F	(5°C-18°C)		240	1	88
HOT WATER	120°F-140°F	(49°C-60°C)	INCLUDES	208	3	49
DRAIN CONNECTION	2"	(5.1cm)	REQUIRED 12kW	240	3	55
RINSE PRESSURE SET	20 ± 5psi	(1.41 kg/cm ²)	BOOSTER	480	3	25
HOT WATER INLET	1/2"	(1.3cm)	APPROXIMATE SHIPPING WEIGHT	528#	(239kg)	
COLD WATER INLET	1/2"	(1.3cm)	SHIPPING DIMENSIONS	PALLET & WOODEN CRATE @ 41" X 41" X 86"		
OPERATING TEMPERATURE						
WASH-°F (MIN)	155°F-160°F	(68°C-71°C)				
RINSE-°F (MIN)	180°F-195°F	(82°C-90°C)				
HEAT LOAD TO ROOM (BTU/HR)						
	LATENT 7,986					
	SENSIBLE 5,005					

Summary Specifications: Model CMA-180-VL

The model CMA-180-VL single tank, high temperature dishwasher is designed for years of trouble free service, producing sparkling results while conserving energy, water and chemicals. This machine is supplied with a built-in 12 kW booster heater required for "Ventless" feature to function. The CMA-180-VL comes standard with the 3-door feature for straight or corner applications. Unique soil purging system filters wash water and plate debris into an external tray. The CMA-180-VL is NSF, UL, CUL approved. Constructed entirely of stainless steel.

Advisory: CMA does NOT endorse "Tankless On-Demand" water heaters for use on CMA Dishmachine products. CMA DOES endorse, and highly recommends, the standard "tank" style water heaters, sized properly to handle each particular facility with their water heating requirements.



CMA Dishmachines 12700 Knott Street Garden Grove, CA 92841 • 800-854-6417 • 714-898-8781 • Fax: 714-895-2141 • www.cmadishmachines.com

CMA reserves the right to modify specifications or discontinue models without prior notification.

PN: 10113.10

© 1-2018 CMA, Inc.

an Ali Group Company



The Spirit of Excellence